

MEETING MINUTES



SOUTH 32 ILLAWARRA METALLURGICAL COAL COMMUNITY CONSULTATIVE COMMITTEE

MEETING: # 48

LOCATION: Douglas Park Hall

DATE: 14 July 2020

ATTENDEES:

Mike Archer (MA - Chair)
Shane Simpson (SS)
Sharyn Cullis (SC)
Sam Davis (SD)
Noel Lowry (NL)
Danny Stewart (DS)
Peter Chaffer (PC)

ILLAWARRA METALURGICAL COAL:

Amanda Blunt (AB – South32 Community)
Rhiannon Wright (RW – South32 Community)
Alexandra Szalla (AS – South32 Community)
Chris Schultz (CS – South32 Environment)
Melanie Cocca (MC – South32 Environment -
guest)

APOLOGIES:

Michael McGrath (MM)
Barry Durham (BD)

| | |
|---|--|
| 1 | PURPOSE |
| | <p>The purpose of the Community Consultative Committee is to facilitate and maintain two-way communication between South32 Illawarra Metallurgical Coal, key stakeholders and local residents. It is to promote open discussion on the activities of South32 Illawarra Metallurgical Coal's Bulli Seam Operations, including underground mining and surface operations of Appin; environmental performance and community relations; and to keep all stakeholders informed on these matters.</p> |
| 2 | AGENDA |
| | <ul style="list-style-type: none"> • Welcome, Acknowledgment of Country and apologies • Declaration of Interests • Acceptance of Previous Meeting Minutes / Business Arising from previous Meeting Minutes • Questions on Notice Tracker • Update from South32 Illawarra Metallurgical Coal <ul style="list-style-type: none"> ○ Mining Operations Plan ○ Environment ○ Operations ○ Community • General Business <ul style="list-style-type: none"> ○ Communication with the Broader Community ○ BSO Newsletter ○ 2020 meeting dates ○ Round the table • Meeting close |
| 3 | WELCOME / APOLOGIES |
| | <p>MA opened the meeting at 4.05pm and noted apologies from MM and BD. MA advised we would be adopting an Acknowledgement to Country at the meetings. MA provided the Acknowledgement to Country – "Illawarra Metallurgical Coal and the Community would like to acknowledge the Traditional Owners of the land on which we meet this evening, the Dharawal People, and pay our respects to Elders past and present."</p> |
| 4 | DECLARATION OF INTERESTS / CORRESPONDENCE |
| | <p>MA declared he receives payment from South32 Illawarra Metallurgical Coal (IMC) to fulfil the role of Independent Chair. It is a requirement of the Government CCC Guidelines that this be noted and stated in the minutes at every meeting. No further declarations were noted by the committee.</p> |
| 5 | PREVIOUS MEETING MINUTES AND BUSINESS ARISING |
| | <p>RW provided comments from previous meeting minutes (May 2020). These minutes were accepted by SC and seconded by SD. The March 2020 meeting minutes were not approved and will remain in draft form until the next CCC meeting (September 2020). MA provided an update on the Department of Planning, Industry and Environment (DPIE) attendance to the CCC meeting. The Department would not be attending a meeting unless there was an assessment for review, such as a proposed ventilation shaft.</p> |
| 6 | SOUTH32 UPDATES |
| | <p><u>Illawarra Metallurgical Coal Update</u> Mountbatten House</p> <ul style="list-style-type: none"> • RW provided an update on the Conservation Management Plan (CMP), which was reviewed by specialist heritage consultants. • The Heritage Management Plan has been updated to incorporate the updated CMP as well as some other minor updates for consistency with our other management plans. This |

- revision has been submitted to DPIE for approval and we are awaiting response.
- SD questioned again when the Committee would see the CMP and why they had not had input. AB explained IMC engaged heritage consultants, Niche, to complete the CMP as experts in maintaining historic buildings. The Committee was previously advised it would be provided a copy of the CMP when it was approved, and this remains the case.
 - SD noted he would have liked Niche to consult with the community on the CMP.
 - Mountbatten church/stable approval of the builder's proposals is still in progress and awaiting approval. A timeframe for the works will be shared at the next meeting, if available.
 - SC noted it is high priority for the Committee as there is rarely progress. SC also questioned the safety of the Mountbatten property and commented that it should not be destroyed due to neglect. DS agreed that it should not be left to fall apart.
 - RW will provide an update on the safety of the Mountbatten property at the next meeting.

COVID-19 controls

- RW provided an update on IMC's current COVID-19 controls; The business is focused on safety as the key priority and conducting business as usual, this includes keeping our people safe and well, maintaining safe and reliable operations, and supporting our communities.
- IMC has kept the implementation of A / B rosters and staggered shifts on sites, employees returned to the office 6 July.
- Additional cleaning measures are in place while continuing to follow all Government advice.

Mining Operation of the Year

- IMC has been named NSW Mining Operation of the Year at the 2020 NSW Mining Industry and Suppliers Awards. The award recognises achievements across IMC's operations, with the business focusing its efforts on transforming operational excellence, meaningful contributions to local communities and ensuring long-term sustainability.

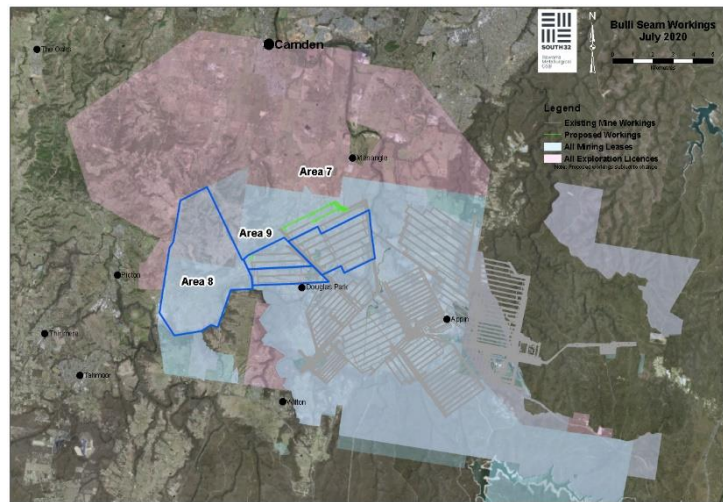
Personnel changes to South32

RW provided an update on personnel changes to the following positions:

- Jason Economidis – Chief Operating Officer
- Wayne Bull – IMC Vice President Operations
- Richard Johnson – Appin Mine General Manager (Acting)
- Melanie Cocca – Health, Safety and Environment Manager

Exploration

- AB presented a map of the exploration license area over Wilton as requested at the last meeting.
- At the previous meeting IMC advised that exploration activities were continuing in the Menangle, Razorback and Cawdor areas for the remainder of 2020. This remains the case with three drill rigs operating across Menangle, Razorback and Cawdor.
- In the previous meeting SD questioned the approval process before IMC can conduct exploration activities. AB provided comments that all exploration activities take place within the rules and regulations of the Mining Act 1992. Several steps must be taken including submitting and receiving approval for a Review of Environmental Factors (REF) for each site.
- SD noted he had no issues with the exploration drill rig on Menangle Road.
- Committee requested a copy of the map presented at the meeting showing all exploration licences, mine leases and current mine operations.
- SC requested the map be made available on the South32 website. AB advised it was available on the Geoscience website however SC wished to see it on the South32 website.



Mining Operations Plan

- CS presented on the Bulli Seam Mining Operations Plan (MOP), which is currently under review.
- The MOP addresses the rehabilitation objectives for all domains associated with the current Appin Mine operations and the completed West Cliff Mine operations. It is a tool used by the Department to monitor the progress of mining and rehabilitation activities across the life of a mine. The MOP also meets the requirements of the Rehabilitation Management Plan.
- Consultation has been undertaken with DPIE, EPA, Biodiversity and Conservation Division, Wollondilly Shire Council, Campbelltown City Council, Camden Council and the CCC.
- CS advised IMC include the comments provided during consultation in the MOP, along with comments back from IMC. CS noted that SD comments had been sent through separately to the Department as requested by SD. SD suggested the consultation on the MOP could have been better. He suggested it be the main business of the CCC with consultation occurring months in advance. CS clarified that IMC already have a MOP which covered 2012-2020. It is reviewed and updated every 4-year period. Previously the consultation included a presentation at a CCC meeting with comments recorded from the meeting and lodged with the MOP. IMC believe the consultation has improved this year by providing the Committee with a full copy of the document for review and comment. SD and DS would like to see the consultation improved further when the next review is due. CS shared that the Department has indicated the consultation completed is adequate however IMC will take on board comments for the next review.
- CS commented on the Rehabilitation Objectives which included the need for them to be achievable, meet regulatory requirements and to be consistent with the closure planning.
- CS provided MOP updates on the rehabilitation at North Cliff (investigate removal of fish and turtles from site dam), Brennans Creek Dam removal (works will not go ahead until dam is no longer required for operational activities), ventilation shaft and other projects (information provided to CCC when available), closure plan (not yet approved by Resources Regulatory) and gas releases (included in MOP as appendix).
- SC was concerned that the observatory is an option for rehabilitation of the North Cliff area. It is exceptionally controversial with the area exposed to wildfire and the access to the land is difficult. CS noted this has been included as an option and remains in the MOP.
- SD questioned what needs to be included in the MOP. CS indicated that the Regulator determines what standard and content is adequate. Requested that the MOP guidelines be shared with the minutes.
https://www.resourcesregulator.nsw.gov.au/data/assets/pdf_file/0007/527911/ESG3-Mining-Operations-Plan-MOP-Guidelines-September-2013.pdf
- CS commented on the purpose of the MOP as to define options that are available during rehabilitation, not to define what will happen.
- CS commented on Vent Shaft 6 (VS6) and Douglas Park sub-station. Rehabilitation of property options was flagged as a point of concern for the Committee. SD was concerned the VS6 site could be returned to residential and wished for it to be noted that this will cause

angst if it is included in the MOP. SD would like the area to be returned to Cumberland Woodland as was once proposed by IMC. CS noted that it is included as an option.

- SC concerned the emplacement is flagged as potential residential/light industrial. CS confirmed it is highlighted as potential light industrial in the MOP, not residential. This is an option and is not a final decision. SC is concerned it does not align with the Macarthur 2040 Growth Plan.

Environment Update

- CS advised infrastructure is coming from countries impacted by COVID-19. Delays in delivery of the equipment and the timeframe is unknown at this time. When more information is available on the timeframe it will be shared with the Committee.
- CS advised the Aquatic Health Monitoring Program has been submitted to the EPA for approval.
- CS advised the Water Management Plan has been revised and submitted to DPIE.

Georges River Remediation Plan (GRRP)

- CS advised the GRRP has been approved and a copy of the plan is available on the South32 website. [https://www.south32.net/docs/default-source/illawarra-coal-bulli-seam-operations/management-plans/mining-operations-plan/appendix-n---georges-river-remediation-plan-rev-5-\(compressed\).pdf?sfvrsn=117060ad_2](https://www.south32.net/docs/default-source/illawarra-coal-bulli-seam-operations/management-plans/mining-operations-plan/appendix-n---georges-river-remediation-plan-rev-5-(compressed).pdf?sfvrsn=117060ad_2)
- The GRRP It will also be included as an appendix in the Mining Operations Plan.

ISO 14001 Audit

- SAI Global undertook the annual audit (desktop and inspections)
- No non-conformances were identified.

Dust Suppression Trial

- Dust-a-side (a soluble tar) has been trialled at Appin West.
- The trial has been successful and the option for use at Appin North is being investigated.

Nepean Biobanking Site

- CS confirmed 3,400 seedlings were planted in May/June 2019 at the Nepean Biobanking site. An estimate of survivability was undertaken in March 2020 and confirmed that 900 plants did not survive indicating a 73% success rate. The remainder of the plants are surviving quite well considering the extreme conditions they have experienced since they were planted. There has been some predation from goats in the area. Some additional planting is planned in coming weeks. Site preparation for this planting has been completed.

Appin Area 9 update

- RW advised LW903 commenced 1 November 2019. As at 6 July the Longwall progressed approximately 1,170 meters, and the longwall face was approximately 1.1km from Nepean River
- In late April, IMC experienced difficult mining conditions. This has slowed the progress of mining and the Longwall is due to end March 2021 (previously December 2020). IMC have notified all relevant landholders of the delay.

Appin Area 7 update

- RW advised that mining had commenced at LW708B in late April 2020. It has progressed approximately 397 meters as at 6 July 2020. The longwall commencement letter was sent to relevant landholders prior to the longwall commencing.
- LW708B is approximately 2 kilometers from Nepean River.
- IMC continue to engage with residents in the area.

Impacts update

Environment:

- RW presented on environmental impacts and updated on gas releases in the Nepean River.
- No new gas releases have been identified since the previous meeting.
- There are 11 active gas zones on the Appin Area 9 end of the Nepean River i.e. upstream of Douglas Park Weir.
- 29 zones are inactive.

Infrastructure:

- Menangle Road and railway surveys are continuing in line with Longwall 903 and Longwall 708B.
- The small ripples that formed on Menangle Road above Longwall 903 were repaired on 17 April.
- Hume Motorway and Main Southern Rail Line preparations underway to support Longwall 708B.
- Longwall 708B is planned to approach within 400m of the Main Southern Rail in early August.

Community Complaints

- RW reported that one complaint was received since the last meeting.
- It was noted that a community member called regarding exploration activities underway in Menangle and the community consultation that had occurred. IMC has since responded to this complaint.
- RW provided figures relating to the complaints received in the three previous financial years – FY18 (27), FY19 (8) and FY20 (7).

Community Support

- RW provided the Committee information regarding the community support investments from last financial year.
- Lifeline Macarthur \$10,000 – Financial counselling support for 6 months
- Community Links \$10,000 - Program for immediate needs within the community and providing supplies to people in need
- Women in Business \$13,000 - Training programs for individuals and small businesses to bounce back from effects of Covid-19
- Appin Chamber of Commerce \$14,000 - Shop Locally program for Wollondilly area
- Appin Memorial Project – Memorial Sculpture now installed. Memorial Ceremony will be held on Friday 24 July and seeking a representative from CCC to attend.
- STEM Program: IMC and Wollongong's Science Space are helping to bring science, technology, engineering and mathematics (STEM) subjects to life for local students thanks to an innovative partnership brought about by the recent COVID-19 restrictions. When COVID-19 forced the closure of local schools, IMC and Science Space teamed up to create kits containing STEM equipment, experiments, projects and activities in line with the NSW curriculum, to help Year Three and Four primary students learn from home. STEM kits will be distributed to around 800 students at 26 schools in the Illawarra, Wollondilly, Shoalhaven and Southern Highlands. So far, five schools with more than 300 children have joined the program, including Douglas Park Primary School.

Community Partnership Program (CPP)

- AB provided an update on the CPP. In FY20, \$129,505 was committed to projects in the areas surrounding IMC's Appin mining operations. Recent donations include five local brigades (\$49K), Lifeline Macarthur (\$30K), and Stewart House (\$3,120).

7

QUESTIONS ON NOTICE AND GENERAL BUSINESS

Questions on Notice:

- **Q:** SC - Is the whole Mountbatten property, including the homestead and other buildings, safe? Can we confirm there is no damage to roofs or leaks?
- **Q:** DS – Can the CCC receive an update on the progress of the Mountbatten property every 6

months? The next update being due January 2021.

- **Q:** PC – Has there been any subsidence damage at the truck stop on Hume Highway from Area 7 mining activities?
- **Q:** PC – Were there any active gas zones in Nepean River before mining commenced in Area 9?

General Business:

Communication with the Broader Community

- SD requested this be included on the agenda following feedback from a post made on Facebook referencing the CCC. MA had contacted SD to remove reference to the CCC and SD was unclear why the reference was an issue.
- RW noted there is no issue with members using Facebook to disseminate meeting information or seeking input from community, however there are guidelines that need to be followed. The post could be read as SD was speaking on behalf of the CCC which, under the CCC Guidelines, this is not permitted. The Chairperson is the only person able to speak on behalf the Committee with permission from members.
- MA noted the wording in the post could be interpreted as acting on behalf of Committee.
- The Committee discussed the appropriateness of the post and agreed the post could be interpreted as speaking on behalf of the Committee. All agreed the amended version of the post was suitable.
- RW reiterated to always link to the CCC meeting minutes where possible when posting on Facebook.
- SD understood how the post could be interpreted as speaking on behalf of the Committee and would consider his language in the future.
- A copy of the CCC Guidelines can be found at this link
<https://www.planningportal.nsw.gov.au/major-projects/community/community-consultative-committees/ccc-guidelines>

BSO Newsletter

- Community Newsletter for June 2020 is available on the South32 website and has been delivered to landholders surrounding IMC's Appin mining operations.

Meeting dates 2020:

- Tuesday, 15 September
- Tuesday, 10 November – MA requested a change of date

8

ACTIONS

- **Action:** IMC to share CMP when approved.
- **Action:** RW to share a copy of the presented map at the meeting showing all Exploration Licences, mine leases and current mine operations.
- **Action:** AB to investigate what information is available on the South32 website regarding exploration licence areas and consider uploading the map to the South32 website.
- **Action:** CS to provide Mining Operation Plan guidelines to CCC.

9

CLOSE OF MEETING

Close of meeting at 5.55pm.