

MEETING MINUTES



SOUTH 32 ILLAWARRA METALLURGICAL COAL COMMUNITY CONSULTATIVE COMMITTEE

MEETING: # 47

LOCATION: Held via videoconference (Skype)

DATE: 19 May 2020

ATTENDEES:

Mike Archer (MA - Chair)
Barry Durham (BD)
Sharyn Cullis (SC)
Sam Davis (SD)
Noel Lowry (NL)
Danny Stewart (DS)
Peter Chaffer (PC)

ILLAWARRA METALURGICAL COAL:

Amanda Blunt (AB – South32 Community)
Rhiannon Wright (RW – South32 Community)
Chris Schultz (CS – South32 Environment)
Alexandra Szalla (AS – South32 Community)

EMM CONSULTING:

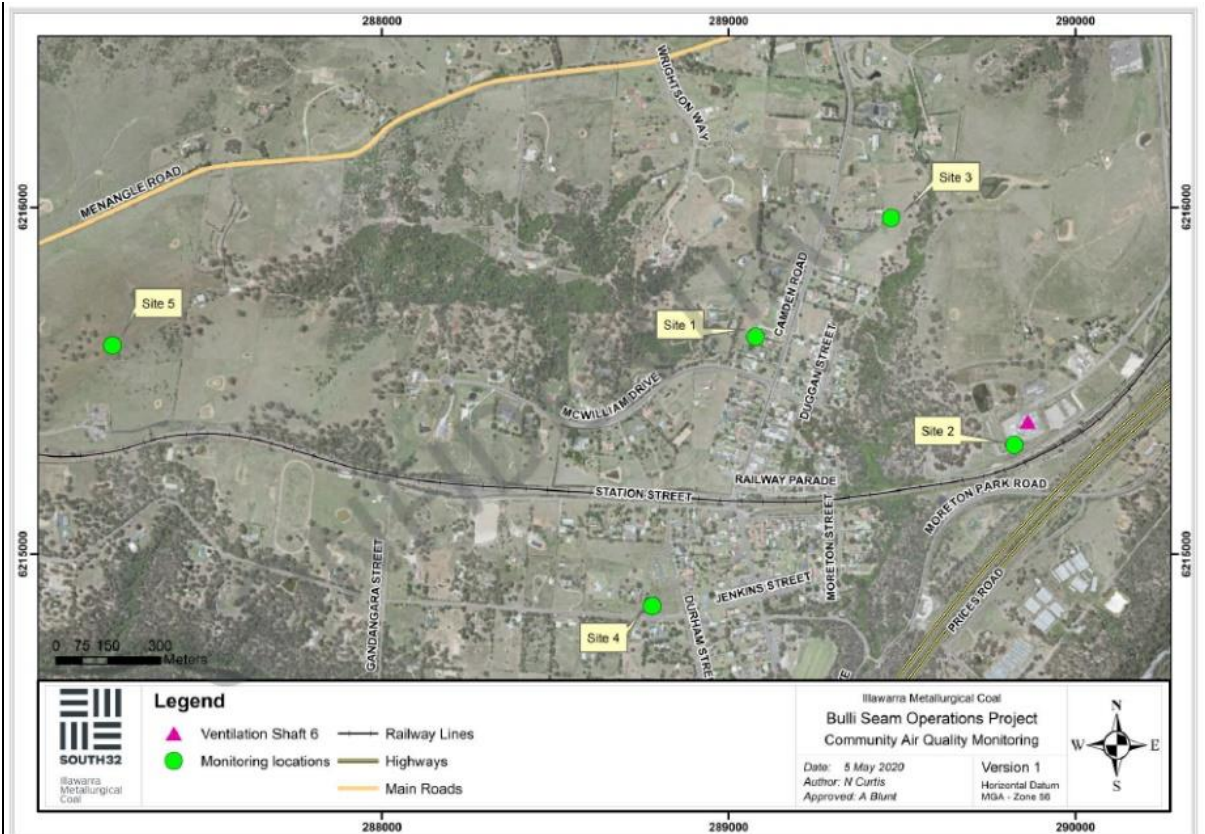
Ronan Kellaghan (RK)

APOLOGIES:

Michael McGrath (MM)
Shane Simpson (SS)
Craig Manz (CM – South32 Appin General Manager)

1	<i>PURPOSE</i>
	The purpose of the Community Consultative Committee is to facilitate and maintain two-way communication between South32 Illawarra Metallurgical Coal, key stakeholders and local residents. It is to promote open discussion on the activities of South32 Illawarra Metallurgical Coal's Bulli Seam Operations, including underground mining and surface operations of Appin; environmental performance and community relations; and to keep all stakeholders informed on these matters.
2	<i>AGENDA</i>
	<ul style="list-style-type: none"> • Welcome and apologies • Declaration of Interests • Acceptance of Previous Meeting Minutes / Business Arising from previous Meeting Minutes • Questions on Notice Tracker • Update from South32 Illawarra Metallurgical Coal <ul style="list-style-type: none"> ○ Environment ○ Operations ○ Community • Air Quality Monitoring Results • General Business <ul style="list-style-type: none"> ○ 2020 meeting dates ○ Round the table • Meeting close
3	<i>WELCOME / APOLOGIES</i>
	MA opened the meeting at 4.00pm and noted apologies from MM, SS, and CM.
4	<i>DECLARATION OF INTERESTS / CORRESPONDENCE</i>
	MA declared he receives payment from South32 Illawarra Metallurgical Coal (IMC) to fulfil the role of Independent Chair. It is a requirement of the Government CCC Guidelines that this be noted and stated in the minutes at every meeting.
5	<i>PREVIOUS MEETING MINUTES AND BUSINESS ARISING</i>
	RW provided comment from previous meeting minutes (March 2020). The previous meeting minutes were not approved and will remain in draft form until the next CCC meeting (July 2020). The previous meeting had limited attendees, however, it has been noted that not all comments were noted in the minutes. MA made comment to the committee that they should note when they would like their comment or question minuted.
6	<i>AIR QUALITY MONITORING PRESENTATION</i>

- EMM Consultant, Ronan Kellaghan provided an update on the air quality monitoring program that was commissioned in 2019 by IMC to understand ambient air quality and the contribution of Ventilation Shaft No. 6 (VS6) to ambient air quality in Douglas Park.
- EMM Consulting assisted with the design of the monitoring program, reviewing the data collected during the program and preparing a summary report of results and findings. Five monitors were placed in Douglas Park: 3 at locations informed by the community and 2 at locations advised by EMM Consulting. See map of monitoring locations overleaf.
- The program was designed to measure pollutants typically found in ambient environments with a focus on pollutants that may also be present in mine ventilation air which included PM10, PM2.5, nitrogen dioxide (NO2) and volatile organic carbons (VOCs).
- The results were referenced to the NSW EPA impact assessment criteria which either meet or are stricter than the Bulli Seam Operation air quality requirements. The results were compared to an average of data collected from four Department of Planning, Industry and Environment monitors located in Campbelltown, Camden, Oakdale and Bargo during the same period.
- Based on the results from the local monitoring for the period November 2019 to April 2020, there appears to be little influence from VS6 on ambient concentrations within the Douglas Park locality.
- PM10 and PM2.5 results: November 2019 to January 2020 results are heavily influenced by bushfires. February to April 2020 results represent typical concentrations expected for the region.
- SD questioned that out of the pollutants recorded, as it was mostly carbon and not diesel, does this indicate that the pollutants are primarily coming from the VS6? RK suggested that unfortunately due to the bushfire season this comment can not be confirmed.
- MA made comment to PM2.5 being a risk to respiratory health and whether this is the same as PM10. RK confirmed that PM10, at high levels, could pose risk to health, however doesn't mean it is any worse than PM2.5, both present risk factors.
- NO2 results: RK noted the concentration at all monitoring locations is less than 50% of the NSW EPA impact assessment criterion.
- SD made a comment regarding the NO2 levels being associated with vehicle exhaust. RK confirmed that the primary contributor of NO2 would be motor vehicles, power stations and wood fire heaters. We would expect lower exhaust emissions from VS6 as Illawarra Metallurgical Coal is required to control emissions underground for its employees.
- VOC results: RK noted that all concentrations of VOCs were well below the NSW EPA assessment criteria.
- BD asked if there would be more monitoring done throughout the year due to the bushfires? AB and RK confirmed that the original plan was to conduct the assessment over 3 months and this monitoring was already extended for additional 3 months due to the bushfires. The five station monitoring program was not going to be continued.
- SD asked if there was a clear way to determine the Mine's contribution to these pollutant levels. RK indicated that it would be difficult without other mechanisms in place i.e. wind monitoring. However, it would still be difficult to attribute something solely to one particular area or source.
- SD suggested the wood fire stoves and heating contributing to the PM10 levels would then exceed all limits in winter if this is the case. RK suggested this isn't likely but could be possible during the winter months.
- DS asked if other infrastructure operations, such as mine sites or power plants, have ongoing monitoring? RK responded that all operations monitor differently and either way it is difficult to always get a definitive answer on all of the attributes.



Illawarra Metallurgical Coal Update

Mountbatten House

- The Heritage Management Plan is currently under review. The review will incorporate the new Conservation Management Plan prepared for Mountbatten House and make some other minor updates. This revision will then be submitted to DPIE.
- SD noted that the IC CCC have not had any input to the Conservation Management Plan and should be consulted next time.
- Regarding the works of Mountbatten church/stable, the review and approval of the builder's proposals is still in progress.
- SC would like a report on the state of the house.
SC requested an update on the church as it was suggested a community event could be held here. AB advised an event was never confirmed, however will provide an update once works have been completed. SC requested a timeline of schedule renovations for the chapel.

Covid-19 controls

- IMC's focus is on our key priorities and business as usual work as we respond to COVID-19, This includes keeping our people safe and well, maintaining safe and reliable operations, and supporting our communities.
- Staff are currently on rotating A and B rosters and have been working remotely where possible.
- Additional cleaning measures have been introduced at all sites, as well as the use of PPE and social distancing measures put in place. Each site has also introduced temperature testing before entering site.

Proposed ventilation shaft

- As communicated last week, the Mountbatten property locations are no longer being considered for a proposed ventilation shaft.
- All IMC CCC and DPAP members, Wollondilly Shire Council, relevant State Government representatives, Douglas Park Primary School and adjacent landholders were contacted and advised the Mountbatten property is no longer being considered as a potential location for a ventilation shaft.
- DS requested a flyer be sent out to all residents surrounding the location to provide an update on the outcome as this was done on initial consultation.

- SC requested more information on the new locations being considered for the vent shaft.
- SD would like to know what has changed after the review in consideration of location preference and will everything go back to normal?
- BD wanted to note that this still wasn't a great outcome as the vent shaft will still need to go somewhere else.
- IMC are still working to understand where future ventilation shafts are required to support our operations and will share further information as it is relevant and becomes available.

Environment Update

Environmental Water Project Update

- CS held a meeting with the Georges River Stakeholder Group on 16 April 2020.
- CS stated prefeasibility/feasibility studies are continuing for Appin West and Appin North water treatment plants. Appin North is the current priority. It is noted that COVID-19 had caused some delays and these are planned to be discussed with the EPA.
- CSIRO aquatic health monitoring report received. The report is available on the South32 website.
- A revision to Aquatic Health Monitoring Program is being progressed.
- Water Management Plan is being revised for submission to DPIE within the coming months.

Georges River Remediation Plan

- CS presented on the Plan to remediate subsidence related impacts from Longwalls 32-38 in the Georges River Remediation Plan has been approved by the Resources Regulator as an amendment to the Mining Operations Plan.
- The Plan is now with the Department of Planning, Industry and Environment for final approval.
- Access to the selected sites will be sought when this approval is received.
- Detailed environmental assessments will be undertaken as part of this process for each location.
- The Plan will be made available on the South32 website when final approval is received.
- SC made a comment regarding the works and not being able to identify all locations on the map (i.e the airport)
- SC asked CS if he can provide details on the remediation strategy. CS noted it is currently with the Department of Planning, Industry and Environment and once it is approved he will provide an update.

Air Quality Monitoring

- CS provided an update on the DustMaster Pro, which has been installed at the Ventilation Shaft 6 site on a hire basis. This unit is the same as the units being used as part of the 5 station monitoring program and can measure PM10 and PM2.5.
- Residents have been advised of the results from the mould and dust monitoring undertaken in 2019.
- The results showed, there was no correlation between the mould samples collected at the properties and the ventilation shaft.
- The majority of the dust samples was organic matter or other inorganic particulates. Coal dust was identified up to a maximum of 1% in 3 of the 4 samples collected.

Mining Operations Plan

- CS presented on the Bulli Seam Mining Operations Plan (MOP), which is currently under review.
- The MOP addresses the rehabilitation objectives for all domains associated with the current Appin Mine operations and the completed West Cliff Mine operations.
- The current MOP has been in place over the period 2012 to 2019. A one-year extension was sought and approved.
- The MOP also meets the requirements of the Rehabilitation Management Plan.
- The MOP has been updated to address changes to operations over that period and incorporate addendums that have been approved and will cover a four-year period.
- Consultation with the IC CCC will be sought and the MOP will be provided to the Chair when

available and IC CCC members will be able to provide comment.

- DS noted that tree plantation along Menangle Road had died and asked about re-planting. *Note post meeting: CS has confirmed 3400 seedlings were planted in May/June 2019. An estimate of survivability was undertaken in March 2020 and it is estimated that only 900 plants did not survive (73% survival). The remainder of the plants are surviving quite well considering the extreme conditions they have experienced since they were planted. There has been some predation from goats in the area. Some additional planting is planned in coming weeks. Site preparation for this planting has been completed.*

Appin Area 9 update

- RW advised LW903 commenced 1 November 2019. As at 13 May we had progressed about 1089 metres, and the longwall face was about 1.1km from Nepean River
- We are continuing to engage with residents in the subsidence area for LW903.
- In late April, IMC experienced difficult mining conditions. This has slowed the progress of mining and the Longwall is due to end March 2021 (previously December 2020). IMC have notified all relevant landholders of the delay.
- DS requested an A3 size map be sent out to him by post.

Appin Area 7 update

- RW advised that mining had commenced at LW708B in late April 2020. It has progressed about 55 metres as at 13 May 2020. The longwall commencement letter was sent to relevant landholders prior to the longwall commencing.
- LW708B is about 2kms from Nepean River.
- Engagement with residents in the area is ongoing. DS requested an A3 size map be sent out to him by post

Exploration Licence Update

- AB provided an updated on the new exploration licence that was recently granted by the state government – EL8972. A map of the new exploration licence area was provided.
- In 2018 and 2019 we engaged with all residents and businesses within the proposed new licence area to introduce ourselves, provide information on potential exploration activities in the area and understand residents' views and what they value in their community. We also advised the IC CCC of this work.
- Since receiving the approval, we have notified residents in the area by letter. Two landholders have been in touch requesting further information.
- We plan to commence engagement with landholders to seek Land Access and Compensation Agreements later this year (subject to the current exploration planning schedule).
- At this time exploration is due to commence in the area in 2021 and continue into the future.
- We are continuing with exploration activities in the Cawdor, Menangle and Razorback areas at this time.
- SC would like to know where the notice is provided once this is approved. AB confirmed it is noted on the Government website <https://www.resourcesandgeoscience.nsw.gov.au/miners-and-explorers/geoscience-information/services/online-services/minview>.
- SD made comment regarding what information is provided to residents in the affected area in relation to subsidence. RW will provide a copy with the minutes.
- SD would like to know if the Government is involved in the engagement process. AB confirmed that they are not involved throughout the process.
- NL asked about what newspapers we advertised in. AB confirmed The Land Newspaper and The Macarthur Chronicle.
- DS would like to know how the government notify the community of the outcomes. It was noted this question can be raised with the Government representative at the next meeting.
- DS questioned how far south the exploration licence extended over Wilton. AB advised the exploration licence area has been covered at previous meetings and included in minutes. A map will be re-shared at the next meeting.

Impacts update

Environment:

- RW presented on environmental impacts and updated on gas releases in the Nepean River.
- No new gas releases have been identified since the previous meeting.
- 12 previously identified zones are currently active. 22 previously identified zones are inactive.
- Monthly inspections are completed. It is worth noting the sites are not active all the time and can fluctuate between active and non-active for a period of time. The information is current as on the day of inspection.

Infrastructure:

- RW provided an update on Menangle Road and railway surveys continuing in line with Longwall 903.
- The small ripples that formed on Menangle Road above LW903 were repaired on 17 April.
- The condition of the cutting on Menangle Road adjacent to LW903 was improved by scaling and re-profiling works in early April.
- Rail works were completed 9 to 10 May by ARTC as part of their program of works.
- Hume Motorway and Main Southern Rail preparations underway to support LW708B.

Community Complaints

- RW reported that one complaint was received since the last meeting.
- It was noted that an anonymous resident called to advise they were unhappy with the new Exploration Licence being approved. They wished to see the community approval for the Licence.
- The resident did not leave any contact details as they wished to remain anonymous, so IMC has been unable to follow up this concern.

Community Support

- RW advised that South32 is committed to supporting the communities we're a part of in response to COVID-19. Globally the Company's Community Investment Fund has contributed US\$7 million.
- So far support has included provision of water, essential hygiene and medical supplies, public health awareness and education campaigns, building capacity in local health care systems and supporting those who are unable to access critical goods and services.

Investment Opportunity

- RW reported at IMC level we are speaking with local community groups to understand where we can assist with the Covid-19 response. We are liaising with Community Links, Women in Business and Appin Chamber of Commerce in the Wollondilly region.
- Applications are pending and we will provide an update once more progress has been made.

Community Partnership Program (CPP)

- AB provided an update on the CPP. It has been working with the five local RFS brigades to ensure they are well equipped for future fire-fighting efforts. About \$49,000 has been donated across the brigades for necessary equipment such as jackets, GPS equipment and portable lighting, to hose cleaners and lockers for suitable storage at the brigade sheds. The brigades should be congratulated for the level of detail in their requests.
- The CPP also recently endorsed a \$30,000 donation to Lifeline Macarthur to support the training of 12 crisis line volunteers.

Questions on Notice:

- **Q:** Can Illawarra Metallurgical Coal investigate mail out a flyer to residents of Douglas Park advising them of the ventilation shaft location outcome?
- **Q:** Request for further information to be provided on the Ventilation shaft location close out for Mountbatten House. What has changed, new location choices and what will happen to the other vent shaft?

General Business:

- MA suggested the next meeting in July should be held back at the hall with social distancing involved. An update on this will be provided closer to the date.
- MA would like to point out with committee members that they are allowed to share information received at the committee to the public, however to ensure that a link is also provided to the minutes of the meeting for clarification.
- MA reiterated that he would like to see the minutes before distributing to the committee. .
- BD would like to question the presentation being noted as confidential. RW confirmed that committee members can share their notes of the meeting with the public, however the content of the presentation have detailed information prepared for IC CCC and the minutes will be available to the public via the South32 website.
- SD would like to note that providing a link to the minutes is difficult as it may be months before they are approved. AB confirmed that a link to the draft minutes is usually on the website within 7 days.
- SC requested an update on the fenced Old Growth Trees on the property along Menangle Road. AB noted this was in the QoN tracker and will be addressed in FY2021
- NL would like to note that Wollondilly Shire Council meetings have now been moved to the 3rd Tuesday of each month which may conflict with the IC CCC meetings. He doesn't wish for the meetings to change dates, just wanted to note it.
- MA noted he is planning to be overseas 17 November. Suggested the meeting be brought forward to 10 November. The Committee agreed.

Meeting dates 2020:

- Tuesday, 14 July
- Tuesday, 15 September
- Tuesday, 10 November – MA requested a change of date

9 ACTIONS

- **Action:** RW to provide updated map of Nepean River gas locations in next CCC meeting presentation
- **Action:** RW to provide a copy of the EL8972 (new exploration licence) community engagement material with the minutes.
- **Action:** RW to include a map of the exploration area covering Wilton at the next meeting.
- **Action:** RW to provide a schedule of the renovations for the chapel at the next meeting.
- **Action:** RW to provide a report on the state of the Mountbatten House at next meeting.
- **Action:** RW to include a link to the minutes section of South32 website.
<https://www.south32.net/our-business/australia/illawarra-metallurgical-coal/documents>
- **Action:** MA to invite Government Representative to next meeting

10 CLOSE OF MEETING

Close of meeting at 6.00pm.