

Minutes

Worsley Alumina Pty Ltd
 PO Box 344
 Collie, 6225
 Western Australia
 Australia
 T: +61 8 9734 8311

south32.net

Worsley Alumina Community Liaison Committee - Mine

| | |
|-------------------------|---|
| Meeting Date | Tuesday 20 May 2025 |
| Meeting Time | 4.00pm |
| Meeting Location | Williams CRC Meeting Room |
| Meeting Chair | Greg Cavanagh |
| Attendees | Greg Cavanagh, Chair Hans Prandl, Shire of Boddington Donna Harris, Community representative Adrian Norton, Acting Principal, Boddington District High School Peter Stubbs, CEO Shire of Williams (departed meeting at 5.45pm) Melanie Durack, Peel-Harvey Catchment Council Ian MacPherson, Community representative Trever Stockil, General Manager, South32 Rod Jones, Manager External Affairs, South32 Claire Reid, Manager Approvals, South32 Amy Greville, Environment Specialist, South32 |
| Apologies | Julie Burton, Shire of Boddington Eugene Smalberger, Community representative Paul Carrots, Shire of Boddington Natalee Lombardi, Community representative Danielle Roache, Boddington District High School Wendy Botes, Manager Environment & Heritage, South32 |

Meeting Minutes

| Item | Description | Presenter |
|------|--|------------|
| 1 | Open Meeting and Note Apologies <ul style="list-style-type: none"> Meeting opened at 4.05 pm Apologies noted as per above. | G Cavanagh |
| 2 | Acknowledgement of Country Claire provided an overview of what Acknowledgement of Country means to her, outlining history, context, importance and connection to country from her perspective. | C. Reid |

Registered Office: Gastaldo Road Collie Western Australia 6225 Australia
 ABN 58 008 905 155 Registered in Australia

South32 Worsley Alumina Pty Ltd, as manager of the Worsley Joint Venture, acts as agent for and on behalf of the South32 Aluminium (RAA) Pty Ltd (56%), South32 Aluminium (Worsley) Pty Ltd (30%), Japan Alumina Associates (Australia) Pty Ltd (10%) and Sojitz Alumina Pty Ltd (4%) (the "Worsley Joint Venturers"). Liability of the Worsley Joint Venturers is several in proportion to their respective participating interests held from time to time in the Worsley Joint Venture (which as at the date of this document are as set out in this paragraph).

Meeting Minutes

| Item | Description | Presenter |
|------|---|--|
| 3 | Read and Accept Previous Minutes | G Cavanagh |
| | Moved | G Cavanagh |
| | Accepted | T. Stockil |
| | Review actions from previous meeting: | R Jones |
| | <ul style="list-style-type: none"> South32 to provide information on dust monitoring following request from Councillor Hans Prandl South32 to come back to the CLC on ASI Accreditation stakeholder engagement requirements Update signage regarding blasting activities along Pinjarra Williams Road South32 web page being updated to include further information on Worsley Alumina, which will include Mine CLC minutes. Invite representative from Gnaala Karla Booja Aboriginal Corporation to attend the next CLC meeting. Invite individuals who have expressed their interest in joining the CLC (D. Thorne; I. MacPherson) to attend the next meeting and present to the members. | <p>Complete.South32 to provide presentation from July 2024 CLC meeting.</p> <p>Additional information provided in meeting. Further update at August 2025 meeting</p> <p>Complete (electronic signs installed)</p> <p>Ongoing. To be completed July 2025</p> <p>Invite extended.</p> <p>Complete. I. MacPherson accepted, no response D.Thorne.</p> |
| 4 | New CLC Community representative presentation Ilan provided an overview of his background, experience, skills, and knowledge in relation to criteria for joining CLC. Attending CLC members voted unanimously to endorse Ilan's nomination to the committee. | Ilan MacPherson |
| 5 | Worsley Business Update General Update Half Year Results February 2025 <ul style="list-style-type: none"> Aluminium production increased 5%; Copper production increased 16% FY25 production guidance remained unchanged, except for Mozal Aluminium where we continued to mitigate the impact of civil unrest in Mozambique GEMCO cyclone recovery efforts continued, including the construction of a new wharf and dewatering activities allowing a phased restart of operations Illawarra Metallurgical Coal divestment completed Quarterly Report March 2025 <ul style="list-style-type: none"> Net cash increased by US\$299m to US\$252m in the quarter due to strong operating results Production highlights include 18% increase in copper and 6% increase in aluminium State and Federal government approval for Worsley mine development project GEMCO on track to recommence export sales in June 2025 quarter. CEO Transition announcement May 2025 Matthew Daley to join as Deputy Chief Executive Officer on 2 February 2026; will assume the role of Chief Executive Officer (CEO) when Graham Kerr steps down from the role later in 2026. Mr Daley will join South32 from Anglo American plc, where he is currently the Technical and Operations Director and a member of the executive leadership team. He joined Anglo American in 2017 as Group Head of Mining, and prior to that he was the Executive General Manager for Glencore's Canadian copper division. Mr Daley's | South32 T. Stockil |

Meeting Minutes

| Item | Description | Presenter |
|------|-------------|-----------|
|------|-------------|-----------|

earlier career included operational, commercial and project roles with Xstrata and Minera Alumbra.

Boddington Bauxite Mine Update

South32

Safety

Safety performance remains positive with key metrics all tracking in line with forecasts
Lead Safely Every Day (LSED) program continues
95% completed Frontline workforce training; 95% LSED Leadership training
Worsley's Refinery and Mine ERT collaborated with Alcoa to explore a Mutual Aid Agreement relationship and share benchmarking opportunities.
Road Crash Rescue Training – Isolation of Electric Vehicles

Production

Bauxite quality has improved over the year following early challenges associated with mining remnant ore
Bauxite inventory remains a challenge as the business navigates the remaining secondary approvals required to facilitate mining in the high-grade areas within the newly approved mining areas.
Safe execution of two major OBC outages
New mining activities along the Pinjarra-Williams Road near the mine entrance have commenced.

Mine Enabling Activities

Water bore exploration –exploration sites close to the Marradong Offices (visible from Pinjarra Williams Road), and near the Boddington Refuse site (potentially visible from Robins Road)
Materials for construction starting to be delivered to site (e.g. material at the entrance to Marradong)
Closure of Siding Road to the public
Increase in traffic expected on Ashcroft Road
Harvesting of trees south of Gold mine Road (managed by Newmont)

Dilyan's Crossing Update

Future Works

May 2025: Commencement of building laydown areas close to the construction area
May 2025: Laying of a poly water pipe across the river (ground disturbance not required – pipe placed on concrete blocks or slung with soft slings; GKB Monitors to be present;
Sept 2025 – Dec 2026: Construction of Bridge at Dilyans Crossing
Nov 25- April 26: Construction (culverts and haul road) at 34 Mile Brook

Greg raised the importance of fire preparation and asked how prepared South32 were.

Trever outlined South32's fire preparedness including identification of fire as one of the biggest risks and the process for fire management. Training of fire crews and the captain of the Boddington Volunteer Fire brigade also being a South32 worker.

Environment

A. Greville

Open discussion what CLC members would like to receive more information on going forward (See Actions)

I Macpherson: ground water monitoring

P Stubbs; water abstraction in the context of demands on water resources increasing

M Durack; impacts to Hotham River, waterways etc

General discussion on impact to QTR (including initiatives on protection from kangaroos), noise and dust management activities, and rehabilitation initiatives.

C Reid indicated more information will become publicly available on a range of environmental matters as compliance reports are finalised. Full reports and summary documents to be made available via South32 website.

Biodiversity Update

Part of our approval requires us to survey every area we plan to clear for potential cockatoo hollow usage. This process requires:

Pre clearance survey to determine trees that would be suitable with minimum DBH requirements

Meeting Minutes

| Item | Description | Presenter |
|------|---|-----------|
| | Then each tree is checked with either a pole camera or drone to get photo evidence and inspect the hollows for their level of usage | |
| | These trees are then ranked on their usage, and any rank 1 or rank 2 trees can be protected with a 30m buffer (unless it is essential for infrastructure, with a limit of 24 trees over the life of our new approval). | |
| | I Macpherson; Do we keep rank 3 trees there for future use? Amy provided overview of process to manage rank 3's will be rechecked within 7 days of initial identification and if no further evidence that the tree is being used then the tree is regarded as suitable for being cleared. | |
| | M Durack; is this being checked in breeding season? A Greville confirmed yes, and all year round. | |
| | C Reid confirmed there are significant amounts of trees outside mining area as well. | |
| | G Cavanagh; any signs of breeding in trees we are monitoring (those that are being drilled). | |
| | C Reid confirmed there are cameras but no indication of breeding as yet. PhD student conducting swabbing for EDNA (as discussed at March 2025 meeting). | |
| | M Durack: what was the minimum of so many trees mentioned on the previous slide? C Reid discussed the maximum of 24 trees that can be cleared over the course of the project. Discussion on a recent example of a redesigned road to avoid rank 1 and 2 trees and to avoid clearing some of the trees. Clearance of trees requires approvals from DWER CEO. | |
| | H Prandl: any views on breeding boxes? | |
| | C Reid – we've hung out 29 cocky tubes on the advice of Ecology Matters consultants regarding location, best trees, best branches etc under the supervision of Ecology Matters experts. Identified sites have water sources and food sources, in a location being ecologically restored. We are also planning the planting of canola crop to assist with food provisions sources. | |
| | M Durack: any evidence of nests being used as yet? | |
| | C Reid - too early to tell yet, likely to see more around August/September. | |

Fauna Monitoring Program

Another exciting program that is coming up on site is the annual fauna monitoring program at BBM. This year our surveys will be focused on our saddleback operation. This program is a 10-day trapping program. There are 11 site locations where the trapping will occur, with each trapping site having: pitfall, Elliot box traps, wire cage traps, cameras set up and eDNA stations.

During previous fauna programs we have caught echidna, chuditch, grey bellied dunart, mardo, western pygmy possum, honey possum and qenda.

If people are interested in this, I am happy to provide information on some photos and results from the fauna program and species we find!

C Cavanagh: what sort of traps do we use? A Greville identified cage ones.

People

South32

HR Key Activity

Worsley engagement survey, "Your Voice" completed. 83% participation rate. Results not yet released. R Jones

Inclusion and Diversity focus: Female participation has grown by 2% and female leadership has grown by 2.4% this financial year.

Planning – recently commenced bulk recruitment program which is run 2-3 times per year.

Current Projects

- Working with GKB – Opportunities for local indigenous employees.
- Planning for FY26: Leadership Development programs
- Entry to Worsley programs: Work experience, TAFE, Traineeships, Engineer Cadet pilot.
- Planning for annual performance review process.

Community Update

Community Complaints

- 22 complaints FY25, Q3 (15 complaints in Q2)
- 22 complaints related to BBM
- 11 complaints related to dust
- 4 complaints related to noise

Meeting Minutes

| Item | Description | Presenter |
|------|---|-----------|
| | <ul style="list-style-type: none"> 2 complaints related excessive blasting notifications 1 complaint related to dust from blasting activities 1 complaint related to impact from blast 2 complaints related to lighting towers 1 complaint related to the environmental management plan for the new Boddington mine - there has been impact to birds, mussels and the river. Caller advised they can no longer swim in the river. She has spoken to the council and is asking for a call back. Caller advised she will be contacting ABC news and will be demanding a water quality check. Caller advised it is also impacting local farmers | |

Community Activities

Community Investment

- Quindanning Picnic Races sponsorship, attendance and volunteers in the lead up to the event
G Cavanagh – expressed his thanks to the volunteers who were greatly appreciated
- Ongoing financial support and attendance by South32 representatives at Summer by the River

Event Attendance

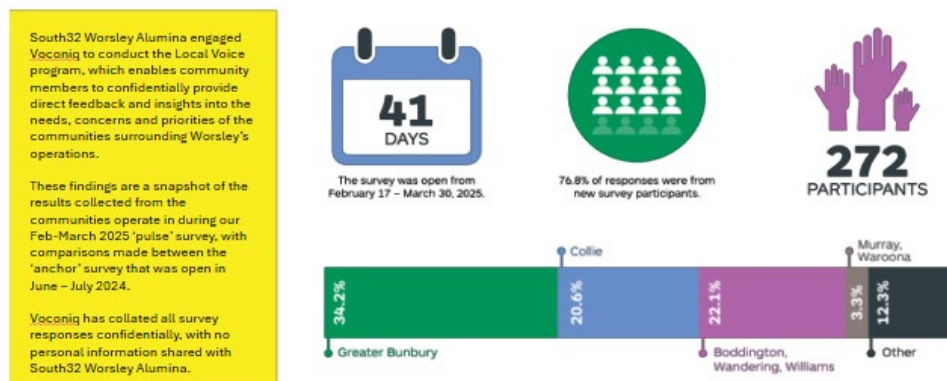
- Attendance at Boddington ANZAC Day dawn service
- Attendance at Medieval Festival.

Engagement

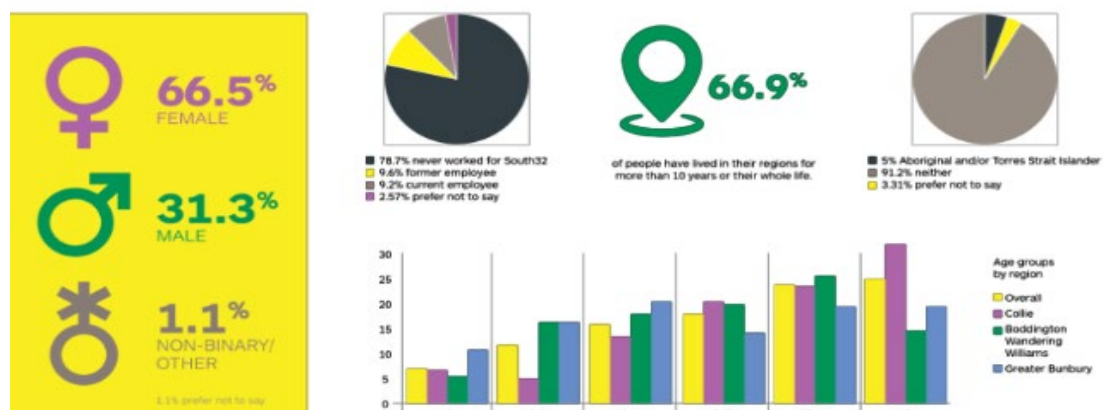
- Shire of Boddington toured the Refinery and Port.

Local Voices Update (Community Perception Survey)

OVERALL DEMOGRAPHICS



OVERALL DEMOGRAPHICS CONTINUED



| Item | Description | Presenter |
|------|-------------|-----------|
|------|-------------|-----------|

Regions of Interest – Breakdown

Vocon
Engagement Science
Insights

| Boddington | Collie | Greater Bunbury | Murray Waroona |
|---------------------|-----------------|-------------------|------------------|
| Shire of Boddington | Shire of Collie | City of Bunbury | Shire of Murray |
| Shire of Wandering | | Shire of Capel | Shire of Waroona |
| Shire of Williams | | Shire of Dardanup | |
| | | Shire of Harvey | |

Locations in 'Other'?

n = 47

Locations had primarily 1 – 2 responses

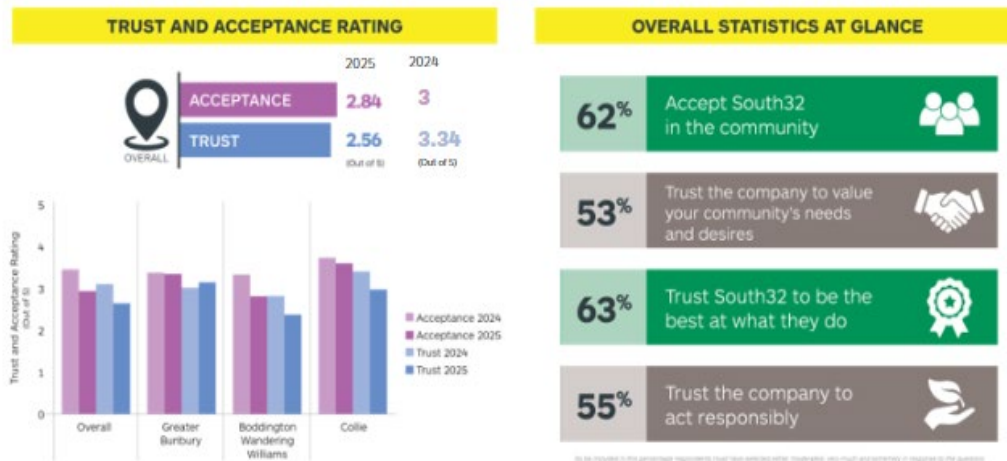
Locations with more than 2 responses:

- Dunsborough (4)
- Mandurah (3)

Boddington CLC Meeting

witchcliffe perth southperth swanbourne
pingelly brook hannans mounthelena
roleystone darlington dunsborough madeley
gosnells bridgetown inglewood
darlingdowns baldivis iluka
brookhampton bicton hammondpark
stjames hilton booragoon
margaretriver erskine claremont fremantle nollamara
wagin mandurah jane coolbellup karridale
mundaring kellerberrin maylands willagee
spearwood northwalpole subiaco

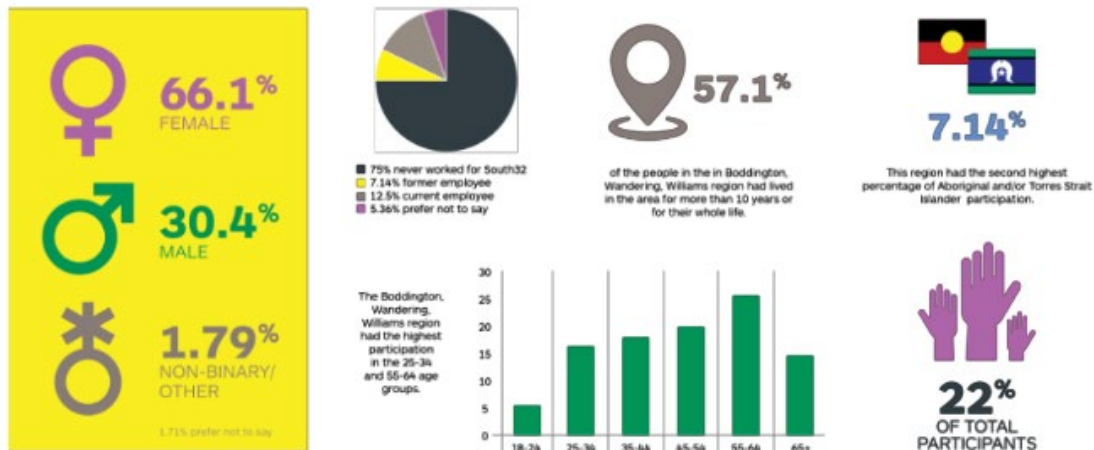
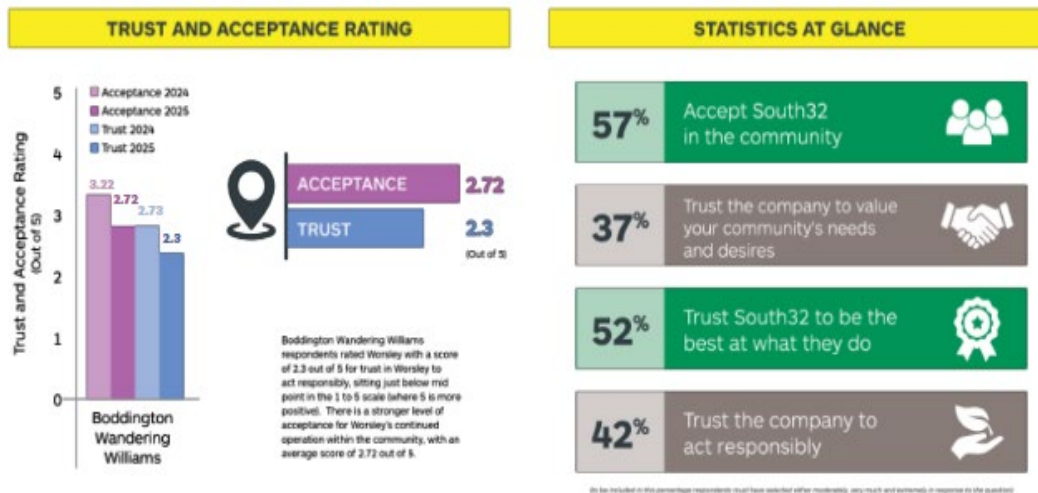
OVERALL TRUST & ACCEPTANCE RATING



D Harris: Has the Greater Bunbury Trust and Acceptance ratings gone up?

R Jones: Slightly down and slightly up. Important to recognise a snapshot in time, starting to see trends over time to enable themes or trends to be investigated.

BODDINGTON-WANDERING-WILLIAMS PARTICIPANTS

BODDINGTON-WANDERING-WILLIAMS
TRUST & ACCEPTANCE RATING

BODDINGTON-WANDERING-WILLIAMS COMMUNITY BELIEF

**1.96**

out of 5



Agree that South32 is prepared to change its practices in response to community concerns.

2.3

out of 5



Agree South32 listens and respects community opinions

2.93

out of 5



Agree South32 follows through on its commitment to my community



Combined, these procedural fairness scores show the Boddington-Wandering-Williams region perceives South32 as not being very responsive, respectful of their opinions, or reliable in following through on commitments. There seems to be a significant gap between South32's actions and the community's expectations and experiences.

| | | |
|---|---------------------------------------|-----|
| 5 | Issue Discussion and Members' Updates | All |
|---|---------------------------------------|-----|

Donna Harris

- Worsley employees used to provide discounts at hotels in Perth etc., which used to be well received and utilized by employees. Are there any similar perks still remaining for South32?

Greg Cavanagh

- Vendor onboarding process very difficult and not user friendly.

Peter Stubbs

- Bridges in WA underfunded; many are jacked up rather than repaired. Several exist in Williams and Quindanning, some of which now have restrictions on. Funding for bridges in WA grossly underestimated – impacts caused by closures or restrictions will cause significant ongoing issues. For awareness only at this stage but may seek South32 support for lobbying if required in the future.

Greg Cavanagh

- Understands the sentiment to take the meetings to Williams and Wandering but those locations probably impact attendance. Discussion and acceptance by attendees to commit to 3 meetings in Boddington and 1 meeting in Quindanning.

Mel Durack

- Enquired as to where South32 was in regards feral pig management. C Reid provided an overview of the program, in particular relating to the Gibbs property.
- Peel Harvey Catchment Council funding trapping program and further training

| | | |
|---|--------------------|-----|
| 6 | Any Other Business | All |
|---|--------------------|-----|

Nil

| | | |
|---|-----------------------------|---------|
| 7 | Review Actions from Meeting | R.Jones |
|---|-----------------------------|---------|

Meeting Minutes

| Item | Description | Presenter |
|------|---|------------|
| | <ul style="list-style-type: none"> As per Meeting Action Table below | |
| 8 | Arrangements for Next Meeting Meeting dates and locations for 2025: <ul style="list-style-type: none"> 19 August – Quindanning 18 November - Boddington | G Cavanagh |
| 9 | Close Meeting <ul style="list-style-type: none"> Meeting closed at 6.10pm | G Cavanagh |

Meeting Action Table

| Item | Action | Responsibility | Due |
|------|---|----------------|---------------------|
| 1. | South32 to provide information on MPI reporting, Annual reporting measures in relation to dust following request from Councillor Hans Prandl | South32 | As soon as possible |
| 2. | South32 to provide regular updates to CLC members and general community in relation to blasting activities | South32 | As soon as possible |
| 3. | Tailor future environmental reporting section in CLC meetings in accordance with what was discussed in today's environment section; <ul style="list-style-type: none"> ground water monitoring water abstraction impacts to Hotham River, waterways etc impact to QTR (including initiatives on protection from kangaroos), noise and dust management activities, rehabilitation initiatives. | South32 | Future Meetings |
| 4. | South32 to provide map of identified breeding trees | South32 | As soon as possible |
| 5. | South32 to provide Fauna Monitoring Program update at next CLC meeting | South32 | As soon as possible |
| 6. | South32 to provide an update on the cumulative impacts arising from Newmont and South32 activities (mainly transport related) | South32 | As soon as possible |
| 7. | Amend future meetings each year to have 3 in Williams and 1 in Quindanning | South32 | As soon as possible |
| 8. | Investigate and report back as to whether any perks remain for South32 employees (eg living local incentive, boarding school fees, hotel discounts etc) | South32 | As soon as possible |