



SOUTH32 WORSLEY ALUMINA MINE CLC MEETING

25 March 2025

AGENDA

Item	Description	Presenter
1	Open meeting and note apologies	G Cavanagh
2	Acknowledgement of Country	South32
3	Read and accept previous minutes Review actions and responses	G Cavanagh
4	Worsley Business Update <ul style="list-style-type: none"> • South32 Update • Boddington Mine • Worsley Mine Development • Environment • Community 	Various
6	Discussion and members' updates <ul style="list-style-type: none"> • Application for new members – Ian McPherson; Debbie Thorne 	All
7	Any other business	G Cavanagh
8	Review actions from meeting	G Cavanagh
9	Next meeting location	G Cavanagh
10	Close meeting	G Cavanagh

WORSLEY BUSINESS UPDATE

Quarterly Report released December 2024

- Alumina production increased 14% during the quarter capturing the benefit of strong alumina prices
- Aluminium production increased 5%
- Sierra Gordon increased copper production by 21%
- Cannington delivered a 56% increase in payable zinc equivalent production
- GEMCO cyclone recovery efforts continued
- Acquired a 19.9% interest in Amercian Eagle Gold Corporation (British Columbia); copper gold prospects

Half Year Results released February 2025

- Aluminium production increased 5%
- Copper production increased 16%
- FY25 production guidance remained unchanged, except for Mozal Aluminium where we continued to mitigate the impact of civil unrest in Mozambique
- GEMCO cyclone recovery efforts continued, including the construction of a new wharf and dewatering activities allowing a phased restart of operations
- Illawarra Metallurgical Coal divestment completed

WORSLEY MINE & MATERIALS UPDATE

Safety

- Good performance with regards to safety.
- Safety Training for all levels of staff (Lead Safely Every Day) continues
- Major focus on updating critical control processes looking to make these processes simpler and stronger
 - critical control training now included in onboarding for new starters

Production

Ore mining slightly above target for the period

Total Material Movement slightly down YTD for the mine – still seeing challenges with grade

People

Regular visits by VPO to the mine; recent JV partner visits to the mine.

Shire of Boddington Council engagement ongoing - investigating a tour of the refinery and port facilities councillors and staff

Rehabilitation Tour continues monthly

Recruitment continues as we try to fill vacancies with a preference for local (Boddington, Williams and Wandering) applicants – SWP, HAYS and full-time

WORSLEY MINE ENABLING INFRASTRUCTURE PROJECTS

- Mine development will see increasing activity around the Lower Hotham Bridge, including the Lower Hotham Underpass project.
- Traffic Management will be set up as required on Lower Hotham Road, and key equipment, including one dozer and four scrapers, will be transported within the Boddington Mine mining envelope.
- Quindanning operations are shifting over the ridge with visible truck movement expected.
 - Strict adherence to our dust management procedures and the use of noise suppressant trucks will be continued.
- Saddleback will soon see new mining activities along the Pinjarra-Williams Road, near the mine entrance.
- Early works will commence around 31 March to widen the permanently closed portion of Ashcroft Road, improving access from the South to the North laydown areas near the Hotham River.

WORSLEY APPROVALS SUMMARY

WE ARE HERE

JANUARY 2021

Submission of Draft ERD (v2)

Description of how we intend to manage and mitigate key environmental impacts associated with the proposal, including proposed approach to key areas such as biodiversity and GHG emissions.

JANUARY 2022

Submission of Final Draft ERD

At this stage, commitments are still provisional and are not binding.

EPA review of the Final Draft ERD – may include request for further information or clarification prior to providing approval to provide the document for public review.

JUNE > AUGUST 2022

EPA Acceptance and Public Review

Following EPA Board acceptance of the ERD – Release of ERD and associated documents for 8 week public review period.

[Note: the Worsley ERD was re-advertised for an additional 2 weeks]

Address public comments and EPA Assessment

South32 to respond to comments received through public review period, which may result in change to proposed management approach.

Once public comments have been addressed, EPA to commence formal accredited assessment process – only assess environmental aspects.

Condition Setting and Approval Determination

Appeals Convenor reviews appeals and makes a recommendation via a report.

Minister reviews both reports & makes a decision on to approval and any conditions if it is decided to progress to approval through a Ministerial Statement

Commonwealth decision able to progress once Ministerial Statement received

Secondary Approvals and Appeals

Once Part IV approval granted, Worsley can then proceed to secondary approvals (eg. Section 18 for bridge construction) – assessment process to run in parallel to previous steps where possible.

APPROVALS SUMMARY



State Approval Granted: 20 December 2024

Federal Approval Granted: 12 February 2025

Statement No. 1237

STATEMENT THAT A PROPOSAL MAY BE IMPLEMENTED
(Environmental Protection Act 1986)

WORSLEY MINE EXPANSION – REVISED PROPOSAL

Proposal:

Worsley Mine Expansion – Revised Proposal

Proponent:

South32 Worsley Alumina Pty Ltd
Australian Company Number 58 008 905 155

Proponent address:

108 St Georges Terrace, PERTH WA 6000

Assessment number:

2216

Report of the Environmental Protection Authority: 1768

Introduction:

The proposal is a significant amendment to the existing Worsley Alumina - Production to Maximum Capacity of 4.7 Mtpa Alumina and Associated Mining proposal which was agreed to be implemented under Ministerial Statement 719. The EPA's Report for the existing proposal is Bulletin 1209, EPA Assessment Number 1526.

Pursuant to section 45 of the Environmental Protection Act 1986, it is now agreed that:

1. the significant amendment proposal described in condition A1-1, may be implemented;

2. Ministerial Statement 719 for the existing Worsley Alumina - Production to Maximum Capacity of 4.7 Mtpa Alumina and Associated Mining proposal is superseded under section 40AA (6) (b) of the Environmental Protection Act 1986; and

3. the implementation of the existing approved proposal as amended by the significant amendment proposal is subject to the following implementation conditions and procedures.

Conditions and procedures


Part A: Proposal extent

Part B: Environmental outcomes, prescriptions and objectives

Part C: Environmental management plans and monitoring

Published on: 20 December 2024

Level 8, Dumas House; 2 Havelock Street WEST PERTH WA 6005 Telephone +61 8 6552 6300
Email: Minister.Whitby@dpc.wa.gov.au

 Australian Government
Department of Climate Change, Energy,
the Environment and Water

OFFICIAL

Notification of approval decision

Worsley Bauxite Alumina Project Expansion, Boddington, Western Australia (EPBC 2019/8437)

This decision is made under section 130(1) and 133(1) of the *Environment Protection and Biodiversity Conservation Act 1999* (EPBC Act). Note that section 134(1A) of the EPBC Act also applies to this approval. That provision provides, in general terms, that if the approval holder authorises another person to undertake any part of the Action, the approval holder must take all reasonable steps to ensure that the other person is informed of any conditions attached to this approval, and that the other person complies with any such conditions.

Approved Action

person to whom the approval is granted (approval holder)	South32 Worsley Alumina Pty Ltd ACN: 008 905 155
Action	To expand and operate the Worsley Bauxite Alumina Project, including the expansion of the existing mine envelope, establishment of a bauxite transport corridor, located 5 km to the south-east of Boddington, WA and establishment of a contingency bauxite mine envelope within the Worsley Bauxite Alumina Project area, located 21 km to the north-west of Collie, WA [See EPBC Act referral 2019/8437 subject to the variations of the Action accepted by the Minister under section 156B on 16 January 2020, 17 July 2020, 28 July 2021, 24 February 2022, 1 May 2023 and 23 January 2024].

Approval decision

decision	My decision on whether or not to approve the taking of the Action for the purposes of the controlling provision for the Action is as follows.				
	<table><tr><td>Controlling Provision</td><td>Decision</td></tr><tr><td>Listed threatened species and communities (section 18 and section 18A)</td><td>Approved</td></tr></table>	Controlling Provision	Decision	Listed threatened species and communities (section 18 and section 18A)	Approved
Controlling Provision	Decision				
Listed threatened species and communities (section 18 and section 18A)	Approved				
period for which the approval has effect	This approval has effect until 12 February 2025.				

DCCEEW.gov.au
John Gorton Building - King Edward Terrace, Parkes ACT 2600 Australia
GPO Box 3090 Canberra ACT 2601 ABN: 63 573 932 849
NOT 401 v10.6

1

OFFICIAL

DILYAN'S CROSSING – UPDATE

- **Geotechnical investigations**

- 2020 Stage 1 Geotechnical investigations (surrounding paddocks)
 - > Approved Program of works (DEMIRS)
 - > S41 notification (DWER/EPA-S)
- 2022 Stage 2 Geotechnical investigations
 - > Approved Program of works (DEMIRS)
 - > S41 notification (DWER/EPA-S)
 - > Reg 7 & 10 (DPLH)
 - > 0.14ha of clearing
- 2024 Stage 3 Geotechnical investigations
 - > Approved Program of works (DEMIRS)
 - > S41 notification (DWER/EPA-S)
 - > Section 18 (Minister for Aboriginal Affairs)
- Complete, report to be provided to DPLH 20 March 2025

- **Future Works**

- May 2025: Laying of a poly water pipe across the river (ground disturbance not required – pipe placed on concrete blocks or slung with soft slings)
- Sept 2025 – Dec 2026: Construction of Bridge at Dilyans Crossing
- Nov 25- April 26: Construction (culverts and haul road) at 34 Mile Brook



OTHER* SECONDARY APPROVALS – WIDER PROPOSAL AREA

Secondary approvals are approvals required from Government Agencies that will support the implementation of the Revised Proposal, examples of the approvals are outlined below.

Submitted (Pre Sept)

- Works approval – Mobile Crushers & Oil water separator ([Approved: 6887/2024/1](#))
- Bed & Bank Permit – Hotham River & 34 Mile Brook ([approved: PMB211533 & PMB21532](#))

Submitted (Sept – Nov)

- Bed & Bank Permit – Wattle Hollow Brook ([approved: PMB211533](#))
- Mining Proposal – L70/223
- S40 Authorisation – Nullaga first clearing ([approved 27 Feb 2025](#))

Submitted (Nov – March)

- Works Approval – Mobile Crushers for road construction (under assessment)
- S40 Authorisation – areas in the WMDE (DBCA requested further information)
- 5C licence to take surface water (seepage related to bridge construction) ([approved: SWL211534\(1\)](#))

** This does not represent an exhaustive list of secondary approvals, rather those that may be of interest to the wider community*

ENVIRONMENTAL MANAGEMENT PLANS

Environmental Management Plans – Approved prior to ground disturbing works commencing (MS1237 Cond: C1-1)

- Water Management Plan
- Local Offset Environmental Management Plan
- Construction Environmental Management Plan
- Flora & Vegetation Environmental Management Plan
- Conservation Significant Fauna Environmental Management Plan

Management Plans are available on the South32 Webpage (MS1237 Condition C2-6)

REPORTING

Reporting is required in accordance with the Compliance Assessment Report (MS1237 Condition D2-1)

Publicly available information:

Extended Mining areas:

- Condition B4-5: Scope of Biodiversity Related Investigations Document
- Condition B4-7: Biodiversity-related Investigations Report
- Condition B7-7, B8-11, B9-11, B11-3: Transport, Mining & Rehab Plans and Water Resource Management Plan

Current Operations

- Condition B13-5: Pre-clearance survey findings & Outcomes
- D2-6(6): Compliance Assessment Report
- D5-1: All validated environmental data, methods, monitoring, EMP's and reports relevant to the assessment of this proposal
- D5-4: Any independent audits requested by the CEO of DWER.

Note: Several conditions of the Federal Approval (EPBC 2019/8437) also require public reporting, aligned with the State approval

ALUMINIUM STEWARDSHIP INITIATIVE

BIODIVERSITY & ECOSYSTEM SERVICES

ASI Performance Standard: 8.1 a & b

The entity shall:

- a. Assess the risk to and potential impacts on Biodiversity & Ecosystem Services
- b. Undertake a systematic review, in consultation with and with the participation of Affected Populations & Organisations to identify Priority Ecosystem Services that are relevant to Affected Populations & Organisations

ASI Performance Standard: 8.3

The entity shall:

- Implement measures that increase resource efficiency of operations
- Where Ecosystem Services of relevance to Affected Populations & Organisations:
 - When under the Entity's direct management & control, use the Biodiversity mitigation hierarchy to maintain access to & value & functionality of ecosystem services
 - When not under the Entity's direct management, work with other parties or within scope of influence to mitigate impacts on Priority Ecosystem Services

MINE REHABILITATION

ASI Performance Standard 8.7e

- Ensure the Mine Rehabilitation and closure plan is developed in Consultation with and, where possible, with the participation of Affected Populations and Organisations and designed by a Qualified Specialist

ALUMINIUM STEWARDSHIP INITIATIVE

Affected Populations

ASI Performance Standard: 9.1c

- A mapping of Affected Populations and Organisations to ensure Affected Populations and Organisations are:
 - I. Engaged by the Entity
 - II. Consulted about operational activities and potential significant Human Rights impacts and informed of the operation's Complaints Resolution Mechanism.

ASI Performance Standard: 9.1c

- The Entity shall respect, in ways appropriate to its size and circumstances, the legal and customary rights and interests of Affected Populations and Organisations in their lands, livelihoods and use of natural resources, including, as a minimum:
 - a. Implement a plan to identify, prevent, monitor, mitigate and account for any significant impacts, including health and safety, social and cultural Human Rights and environmental impacts resulting from its activities.
 - b. Develop the plan in Consultation with and, where possible, with the participation of Affected Populations and Organisations.
 - c. In accordance with the plan, commit resources to Local Community development.
 - d. Review the plan at least every 5 years.
 - e. Review the plan after any changes to the Business that alter Material environmental, social and governance risk(s).
 - f. Review the plan on any indication of a control gap.
 - g. Publicly disclose the latest version of the plan.
 - h. Explore with Affected Populations and Organisations opportunities to respect and support their livelihoods.

WORSLEY ENVIRONMENT UPDATE

Rehab

- Rehabilitation seeding has commenced for the 2025 rehabilitation, chasing 300+ ha.
- Planned use of available forest residue to reduce burning. Removal of timber harvesting from State Forest areas has triggered improved recovery from forest residue without impacting on fauna habitat returns for rehab.

Flora Surveys

- Targeted surveys for priority flora has ended for 2025 for plants that require flowering differences. Most notably for *Hibbertia ambita*. No new significant populations have been identified, with numerous collections still awaiting confirmation from the WA Herbarium.
- A targeted survey in February for the Boddington Gastrolobium (P1), has identified a further 70,000 additional plants. BBM has been working with the WA Herbarium regarding the plants physiological differences between the recorded populations (taller variety). Another collection will occur during the flowering period to identify any further differences. A new sub species may result of the collections.

Feral Pigs

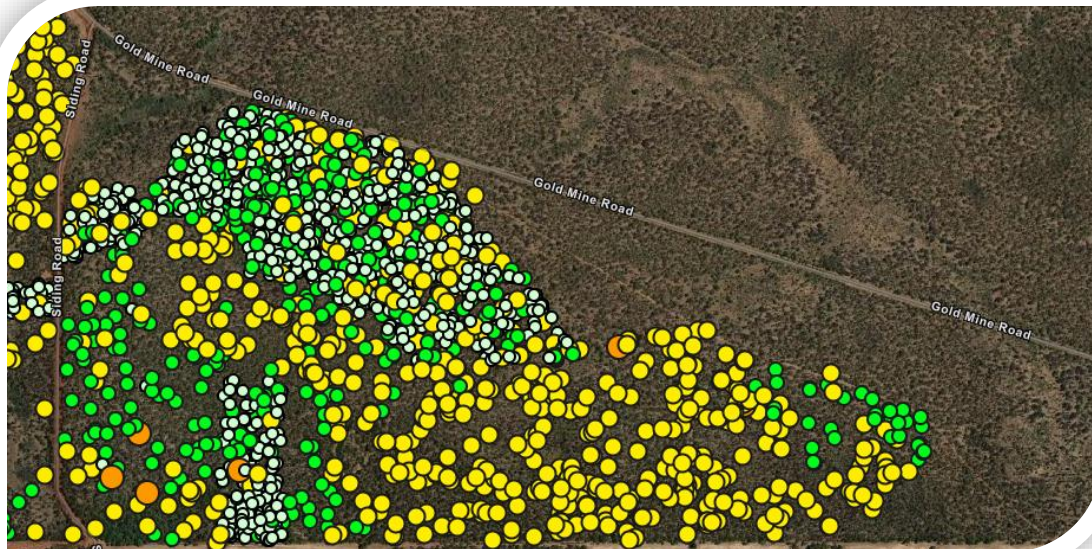
- Previous trials on feral pig baiting within the Quindanning Timber reserve showed little to no interest in baiting stations (or free feeding baits).
- Options for trapping within operational areas were previously restricted by DBCA, however a change in personnel has allowed BBM to conduct trapping activities. Since February, 25 pigs have been captured and transported to an offsite location for destruction. The trapping locations have all occurred on the boundary with private properties, with neighbours support. Remote cameras are placed on all traps to confirm numbers to DPIRD, record keeping and to inform us of any un-approved access.



WORSLEY ENVIRONMENT UPDATE

Cockatoo Surveys

- Large scale cockatoo habitat surveys have been ongoing since 2024 by a Fauna based ecological consultant. The process has been refined to provide the most relevant data for further inspections. Initial ground based pre-clearance surveys have currently identified over 9000 trees (of suitable size, form and have visible hollows).
- Each tree found identified by the consultants (of the 9000) must then undergo pole camera and/or drone check to confirm suitability and identify any evidence of use, which currently sits at just over 1000 trees. Trees are ranked according to the images obtained (1-5). Where evidence of use is found, the tree then becomes excluded from disturbance (Protected). This process has so far identified 8 Rank 2 verified trees (evidence of use), which are to be protected and excluded from mining activities. These trees are additions to previously identified confirmed trees.
- Total data will be reported within the Annual Environmental Report and GIS submitted to DBCA.
- Rechecks of the known high potential or previously confirmed cockatoo hollows will be ongoing during relative breeding seasons.



WORSLEY ENVIRONMENT UPDATE

Research

- The ongoing PhD regarding fauna sampling using eDNA, had identified the use of an artificial hollow in southern Saddleback 2011 rehabilitation by a Red Tailed Phascogale. The hollow had also identified use by Brush Tailed Phascogales and Pygmy possums. Mardos, Pygmy possums and Brush Tailed Phascogales have been identified across all areas of Saddleback in rehab and control areas. This evidence shows that if hollows are available, recolonisation is probable. Next steps are being reviewed.
- A further eDNA research program using air monitoring is planned to occur alongside the existing Saddleback 3 yearly fauna monitoring program to determine capabilities, similarities and suitability of the program. With the intent that it will become an additional sampling method that runs alongside current sampling methodology.



Fox Baiting Trial

Ongoing use of Canid Injectors during the dry Spring and Summer have shown reduced uptake within the targeted areas. This is likely due to the lack of available water near these locations. The decision was made to reduce the density of stations and relocate the remaining to tracks closer to water points.

This has seen an improved investigation by foxes on the stations however confirmed hits are still low (2 in Feb).



WORSLEY ENVIRONMENT UPDATE

BIODIVERSITY OFFSET

Hog Hollows

- Initial monitoring, some indication of fauna investigating hollows

Mammal dens & artificial habitats

- Monitoring shows an echidna and goanna investigating dens

Feral Animal Control

- 27 pigs, 5 foxes and 1 cat removed with Gibbs trapping program (Jan – Mar 25)

Felixer

- Photo Only Trial Period Completed
license application submitted to DBCA

Artificial Hollows – Black Cockatoos

- Planning for installation



WORSLEY COMMUNITY UPDATE

Community Investment

- Community Grants February 2025 Round Outcomes
 - \$84 024 funded
 - 59 applicants, 23 funded (listed by LGA areas)
 - **Boddington 3 applications/3 funded (1 outside the grants process)**
 - Bunbury 22 applications/ 4 funded
 - Capel 1 application/0 funded
 - Collie 10 applications/4 funded
 - Dardanup 3 applications/2 funded
 - Harvey 11 applications/3 funded
 - Murray 3 applications/1 funded
 - Waroona 3 applications/2 funded
 - **Williams 1 application/1 funded**
 - Southwest region 2 applications/0 funded
 - August 2024 round
 - 2 Boddington (3 received)
 - Boddington CRC & Boddington Community Newsletter funded
 - Boddington District High School – 3 year partnership commitment
 - 1 Wandering (1 received)
 - Wandering Boddington Clay Target Club
 - 1 Williams (1 received)
 - Williams Campdraft Club

Community Complaints

- 15 complaints FY25, Q2 (8 complaints in Q1)
- 14 complaints related to BBM
 - 5 complaints related to dust
 - 5 complaints related to noise
 - 2 complaints related to Hotham River drilling activities
 - 1 complaint related to new mine approvals
 - 1 complaint related to removal of snakes from their property caused by mining activity
- 1 complaint related to contamination of Brunswick River
- *3 complaints via other means regarding driving behaviours of contractors potential connected to South32

WORSLEY COMMUNITY UPDATE

[News Story - South32 Worsley Alumina Partners with the Shire of Boddington to Deliver \\$4.5 Million in Community Initiatives » Shire of Boddington](#)



We want to hear from you

Local Voices is a community engagement platform for people who live near or work at South32 Worsley Alumina operations to express their views and experiences.

- ✓ Take our online survey to help South32 Worsley Alumina understand what matters most to you and your community.
- ✓ Earn donations for your local community groups for every survey you complete.
- ✓ 100% confidential - surveys are delivered by Voconiq and your personal details will not be disclosed.

For more info:
voconiqlocalvoices.com/south32-worsleyalumina
fb.com/LocalVoicesSouth32Worsley

Scan the QR code and take the survey now:



South32 Worsley Alumina

Summer BY THE River

Saturday March 22, 2025
Hotham Park, Boddington
FOOD VANS
FIREWORKS
ENTERTAINMENT



WORSLEY COMMUNITY LIAISON COMMITTEE



2 Applicants to join the committee

Debbie Thorne and Ian McPherson

Membership to the CLC committee will be invited from

Worsley Alumina - at least 2 representatives (permanent membership)

Local Government - at least 1 representative from Boddington, Williams, Wandering (permanant membership)

Environment - DBCA, PHCC, Friends of the Reserves and others if deemed necessary (two year term)

Community representatives (two year term)

Fixed term new members – New members will be invited at the expiry of each two-year term. New members must submit an EOI describing their desire to be involved. The CLC will review new member EOIs and on acceptance to the CLC they must sign onto the Terms of Reference.



WORSLEY ALUMINA

MINE - COMMUNITY LIAISON COMMITTEE

Mine CLC Terms of Reference

1. Introduction:

South32 has been built upon four core values; care, trust, togetherness and excellence. Worsley Alumina's desire to establish, foster and maintain a Community Liaison Committee (CLC) is driven at its core by these values.

Due to its geographical distance, two CLCs operate in the communities surrounding the Worsley operation, one for the Boddington Bauxite Mine and one for the Collie Refinery and Bunbury Port.

2. Purpose:

The Mine CLC is the core 'community' representative body for the communities surrounding the mining operation. Members act as a proxy for the broader community of Boddington and surrounding areas.

The CLC's purpose is to act as a two-way discussion and engagement mechanism between Worsley and the community.

To support this purpose Worsley commits to:

- Transparently share information about the operation, key issues and other risks / opportunities of community interest.
- Seek regular feedback on the quality of the relationship between the operation and the community and how the operation is performing in the community.
- Listen, investigate, remedy and close out issues important to the community that are the direct result of the Worsley operation.
- Consult with members in relation to the activities within the Worsley Community Investment Plan.

3. Membership:

Membership to the CLC will be invited from the following stakeholders. These may change over time at the discretion of the CLC and Worsley.

- Worsley Alumina – At least two representatives, one from Worsley Operations i.e. Mine Manager and one from External Affairs i.e. Manager External Affairs.
- Local Government – One representative from the Shires of Boddington, Williams and Wandering will be invited to sit on the committee.
- Environment – Representatives will be invited from the Department of Biodiversity, Conservation and Attractions (DBCA), Peel Harvey Catchment Council, Friends of the Reserves and others if deemed necessary by the CLC.
- Community Representatives:
 - Business & Industry
 - Local residents (at least two from Boddington area)
 - Traditional Custodians
 - Boddington District High School
 - Specialist interest groups i.e. community organisations, cause related not-for-profits, youth / older population groups, etc.

MEETING SCHEDULE 2025

Proposed meeting dates for 2025:

- 20 May - Williams
- 19 August - Quindanning
- 18 November - Boddington

