



SOUTH32 WORSLEY ALUMINA MINE CLC MEETING

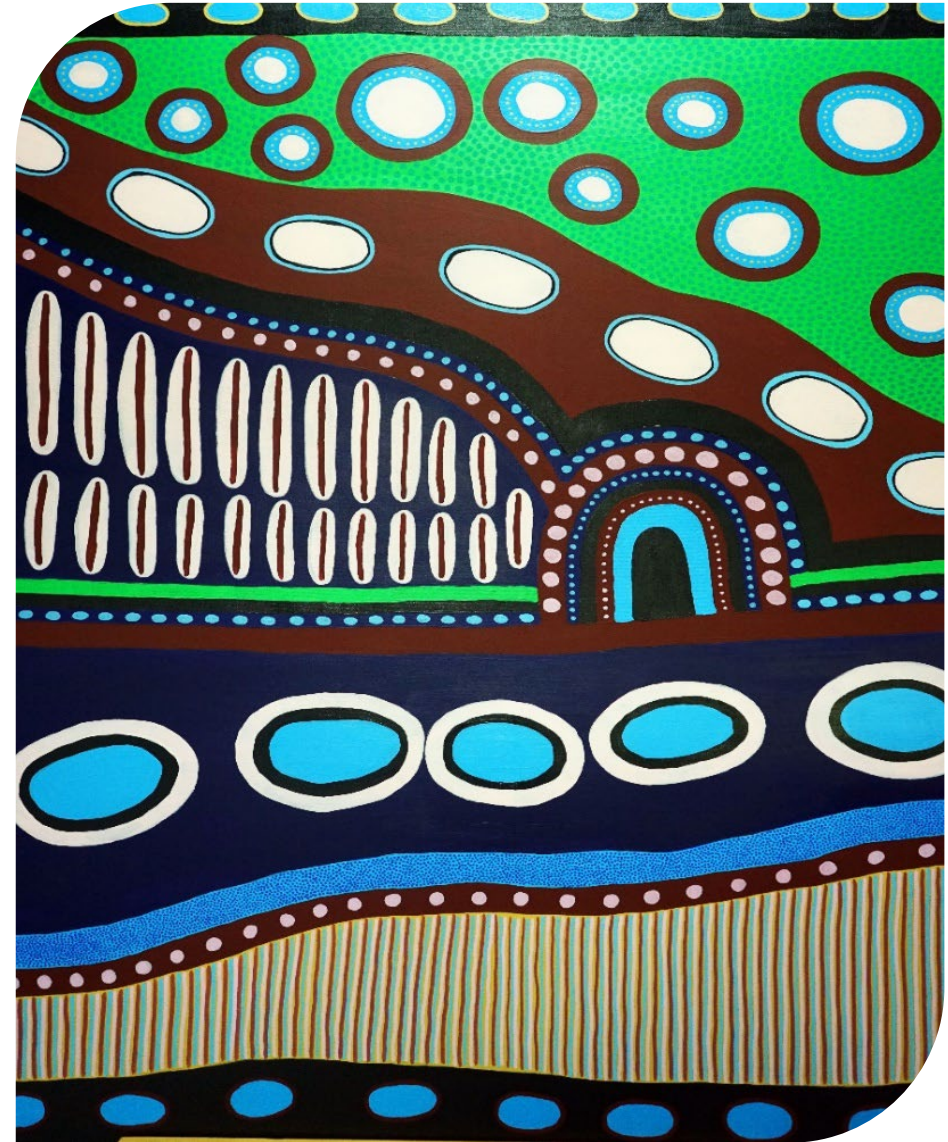
18 November 2025

AGENDA

Item	Description	Presenter
1	Open meeting and note apologies	G Cavanagh
2	Acknowledgement of Country	South32
3	Read and accept previous minutes Review actions and responses Acknowledge receipt of questions – 18 November	G Cavanagh
4	Worsley Business Update <ul style="list-style-type: none">• South32 Update• Boddington Bauxite Mine• Worsley Mine Development• Environment• Human Resources• Community• CLC Profiling	Various
5	Members' updates	All
6	Any other business	G Cavanagh
7	Review actions from meeting	G Cavanagh
8	Next meeting location	G Cavanagh
9	Close meeting	G Cavanagh

Acknowledgment of Country

I would like to acknowledge the Wilman people of the Noongar nation who are the Traditional Custodians of this land we meet on today. I would also like to pay my respect to all Elders past, present and emerging.



WORSLEY BUSINESS UPDATE



Quarterly Report September 2025

- Production highlights included a 12 per cent increase in payable copper equivalent production at Sierra Gorda and a 33 per cent uplift in manganese volumes, as we successfully executed the operational recovery plan at Australia Manganese.
- Alumina production increased by 1% as Brazil Alumina operated above nameplate capacity, while Worsley Alumina benefitted from improved bauxite supply and completed planned calciner maintenance
- FY26 production guidance remains unchanged across all operations.

AGM October 2025

- Stephen Pearce to replace Karen Wood as Chairperson; retirement of 2 other Directors

Cerra Metosa Divestment November 2025

- all conditions precedent to the sale to CoreX Holding B.V (CoreX) have been met, which means the transaction is unconditional and expected to complete early next month.

WORSLEY BUSINESS UPDATE

Alumina mine redundancies

The Yandi wind-down was revealed on the same day about 100 workers at a major alumina refinery in WA's south were called into meetings to discuss their future.

It came after an internal review of Worsley Alumina's operations following a slump in alumina prices.



Workers at the Worsley Alumina operation near Collie have been offered redundancies or redeployment. (ABC South West: Andrew Williams)

Regional WA | Harvey-Waroona Reporter | South West | South Western Times

Jobs on chopping block at South 32



Craig Duncan | South Western Times
Wed, 29 October 2025 4:00PM | +

Craig Duncan



Worsley Alumina operations. South32 Credit: South32/TheWest



Several jobs are on the chopping block at a major South West alumina refinery with a global slump in prices to blame.



OPERATIONAL UPDATE

OPERATIONAL UPDATE

- Production for the quarter progressed well – tracking above forecast for the period
- Drilling exceeded forecast (metres drilled) and blasting activities exceeded budget (holes blasted).
- Challenges throughout the quarter with grade, reactive silica levels and oxalate levels, predominantly related to granitic bauxite
- Current mining locations contain naturally high oxalate concentrations
 - High oxalate poses a risk to refinery production stability
- Anticipate the short term management of oxalate levels to be a challenge into Q3, which may necessitate relocation into lower oxalate mining locations – current locations adjacent to some neighbours
- Medium term management of ore grade required until first ore from the Nullaga project



OPERATIONAL UPDATE – PROJECTS

Lower Hotham Road

The works outlined below are currently scheduled to be completed by 15/01/2026.

- General Freight deliveries: coming from Perth over the next 2-3 weeks. Loads expected are single semi-trailers with minimal materials.
- Water Deliveries: > 6 Semi loads of water p/day, between Treasures & the storage bladder - daily until late December/Early January.
- Basecourse Material Delivery: Planned to commence from the 17th of November for a period of >3 weeks.
- B-double loads of Bluerock from Byford - between 14 & 16 trucks conducting 2 loads each p/day. This will leave enough material on site for 2/3 days work, then the truck fleet will run again to replenish stocks.
 - Subcontractor has asked operators to drive to road conditions. Traffic Hazard signs are in place.
 - Staging of these trucks is taking place at the gravel quarry on Lower Hotham rd. to mitigate any congestion at the project entrance
- Gravel trucks from Treasure's quarry to the project on an as required basis. 2-3 loads a week, expected to reduce throughout November.
- Contractor will utilise the Street Sweeper to clear of the section of loose material falling on the road & its verge at the project entrance as well as the outbound lane from the gravel pit.
- Contractor & Subcontractors have been instructed to plan deliveries and limit road congestion between 7:30 – 8:00am & 3:30 – 4:00pm for safe passage of the school bus route.
- Demobilisation: Primary contractor will commence demobilisation of selections of equipment & buildings from late November through to mid-January. Oversize loads, >3 p/week will be on the roads during these times.
- Also worth noting that there is an increase presence of logging truck exiting the mine site in the far northern extent of our traffic management zone. These are exiting from offset gates on the mine site and running adhoc at the current time.

OPERATIONAL UPDATE – PROJECTS

Newmont

- Low to no impact expected for neighbours in surrounding areas.
- Closest neighbour to current activities is 8.9km from the work front.
- Accommodating workers in the Newmont camp from 15th September. Approx 60 currently, not anticipating this to increase until December. Workforce of 200 at peak.
- Using buses to eliminate traffic impact on Gold Mine Road, only 10 LV allowed to park in the camp. 60% of the workers (busses and LV) will turn left out of the camp and travel away from neighbours. Neighbours are likely to not notice any increase in traffic at all.
- Building a Haul Road to support future mining activities:
 - Preparing area to commence Mid 2026
 - Active mining not likely to start until Jan 2028.
- During peak of mining S32 will still be just over 3km away from the nearest neighbours.
- Day shift only for haul road construction at this stage.

Currently seeing an increase in traffic due to ongoing clearing. Newmont have advised log trucks will continue at 5-7 per day until early January and wood chipping extraction at 10 –14 trucks per day for the same approximate period. Additional woodchip trucks will minimise the requirement to burn biomass next winter.

Ashcroft Road

Usage of road remains as minimal as possible.

Time restriction change to 6am – 6pm commencing week of 20 October 2025

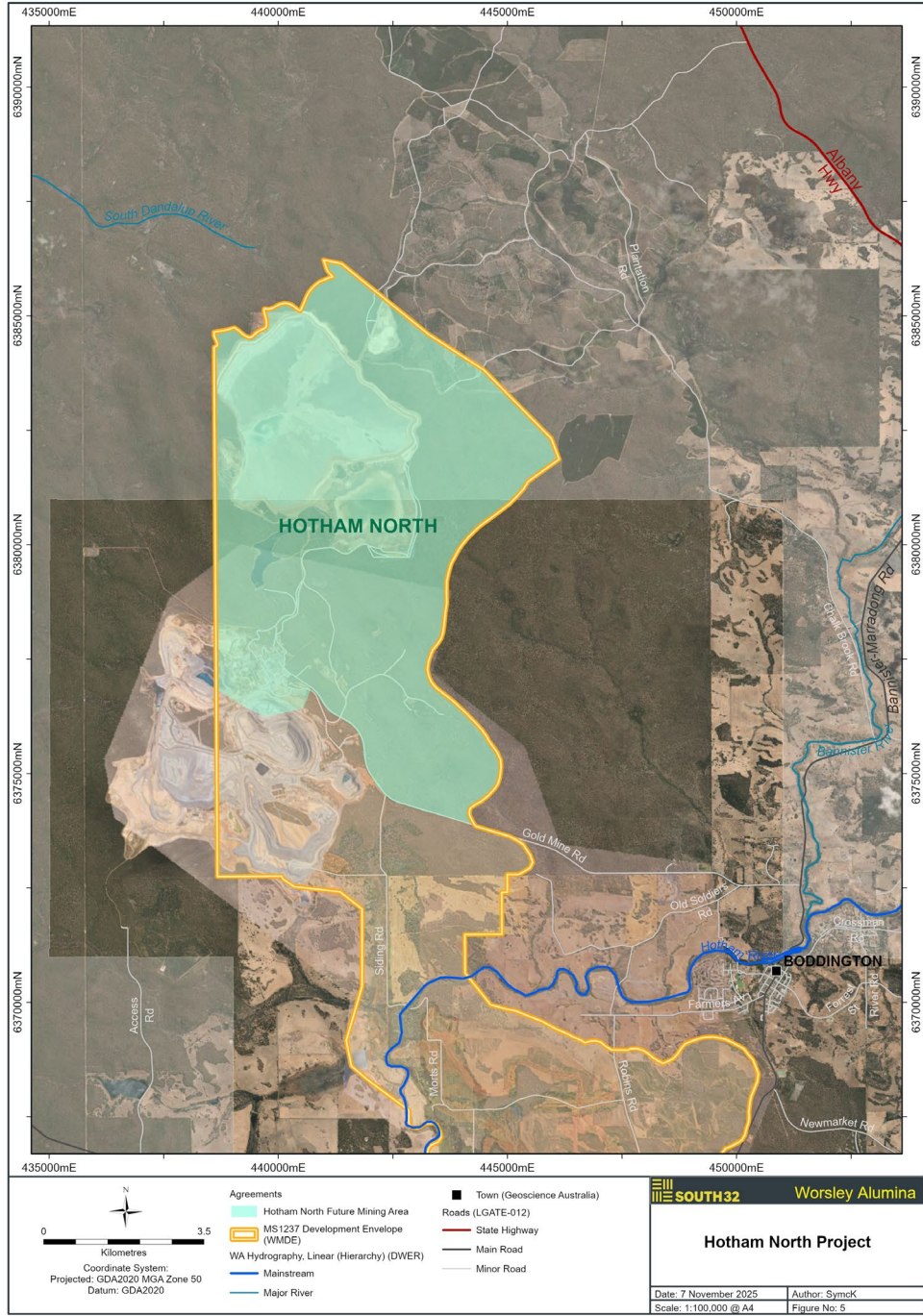
- Heavy vehicle deliveries only (ie flatbed delivery trucks) with Traffic Management Plan
- LVs diverted to access via another route, no longer requiring access via Ashcroft Road
- Day access only will continue (no night access).

HON MINE DEVELOPMENT

The Hotham North Mine Development (HoN) is a Life Extension project forming part of the Worsley Life of Operations Plan (LoOP) and is within the current Part IV Environmental Approval (MS1237).

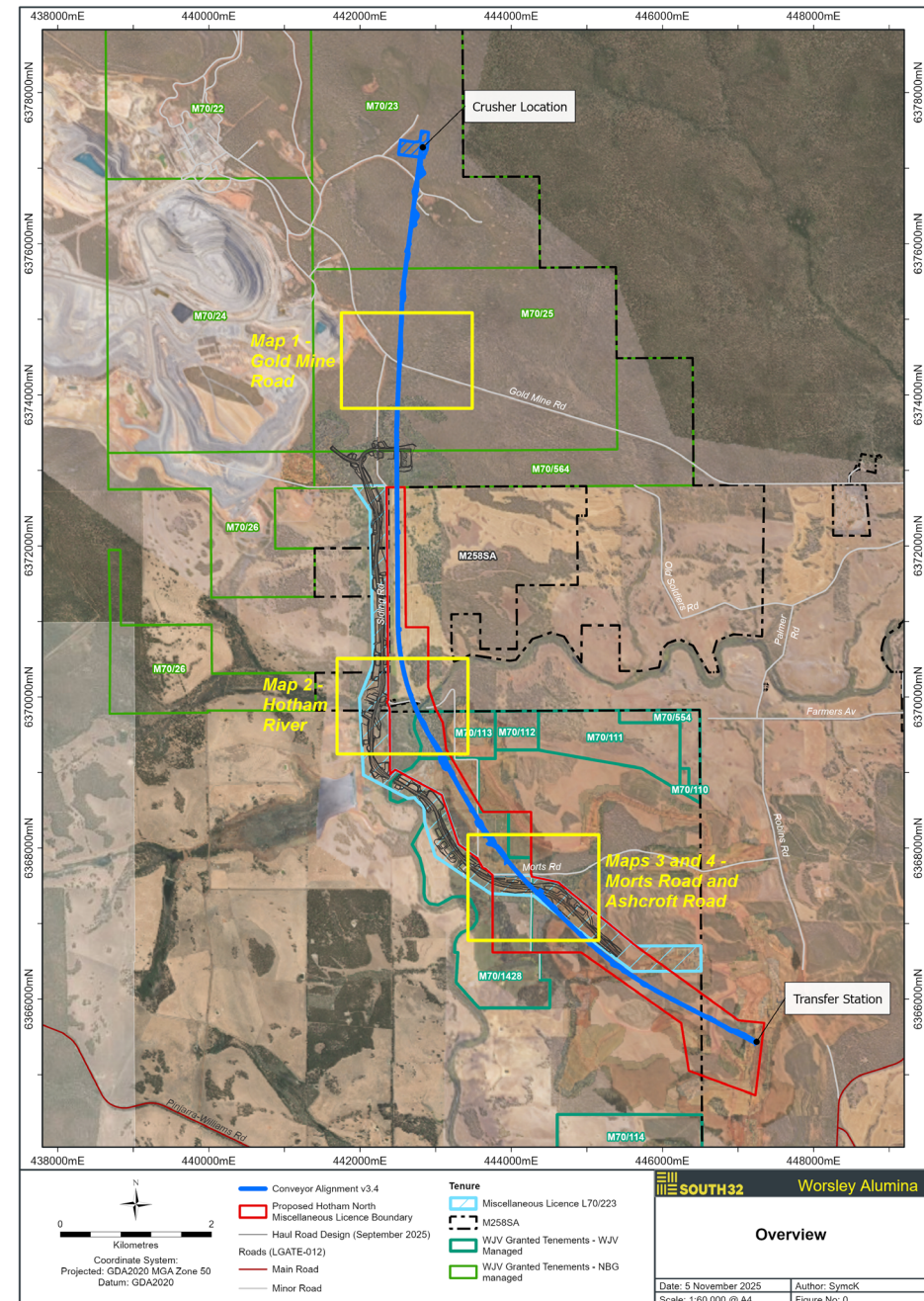
The extension is business sustaining and not linked to a production increase, with HoN confirmed as the next major capital investment to sustain Worsley production beyond **Q1 FY31 (1 July 2030)**.

New fixed plant infrastructure comprising of a Primary Crushing Facility, an Overland Conveyor, and a transfer station located at Marradong will transport ore from HoN to the existing Marradong overland conveyor operations at BBM.



HON ORE TRANSPORT: CRUSHER & CONVEYOR

- As part of the pre-feasibility study, a Crusher and Conveyor was endorsed as the preferred method of materials handling infrastructure
- The OLC Conveyor is a single flight Conveyor, 14km in length (Similar to the existing Marradong OLC)
- The OLC Conveyor will be supported by an access road currently under construction by the Nullaga Mine Development
- The Conveyor option significantly reduces vehicle interactions (1 million vehicle movements annually), in turn reducing greenhouse emissions
- The Conveyor results in lower dust and noise emissions and reduces risk to native Fauna species



ENVIRONMENT UPDATE



ENVIRONMENT – DUST DEEP DIVE

BBM Licence - L5960/1983/11

Table 2: Emission points

Emission Point		Source, including any abatement
A1	Marradong Primary Crusher	Second stage of Marradong Primary Crusher via bag filters
A2	Marradong Secondary Crusher	Marradong Secondary Crusher via bag filters
A3	Saddleback Primary Crusher	Saddleback Primary Crusher via bag house in front of the discharge conveyor
A4	Saddleback Secondary Crusher	Saddleback Secondary Crusher via bag house in front of the discharge conveyor

Ambient air quality monitoring

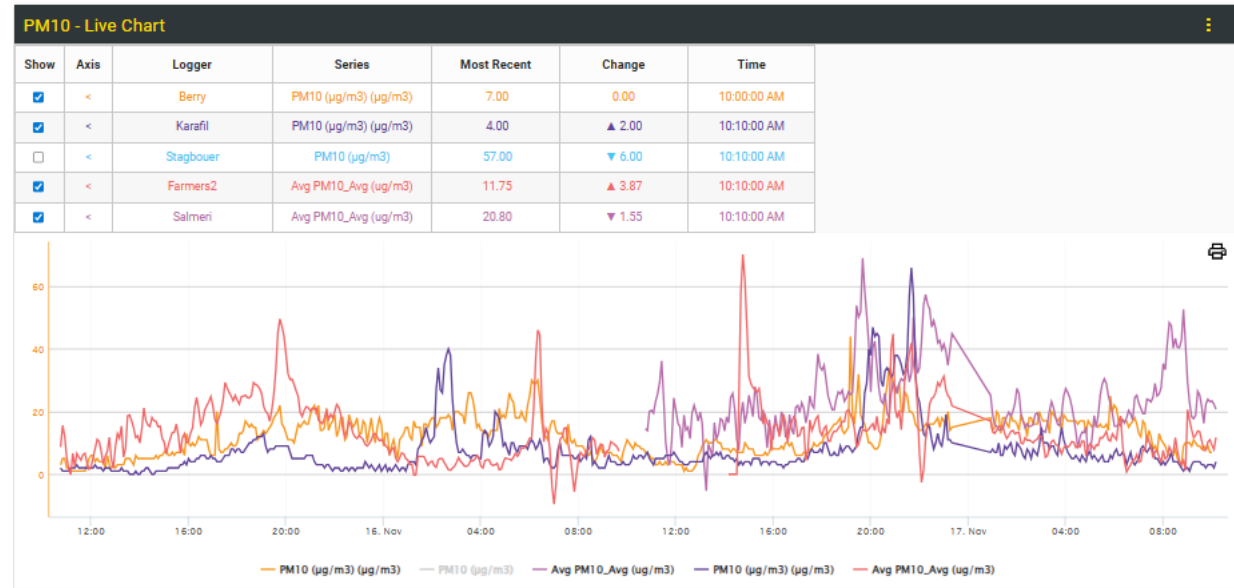
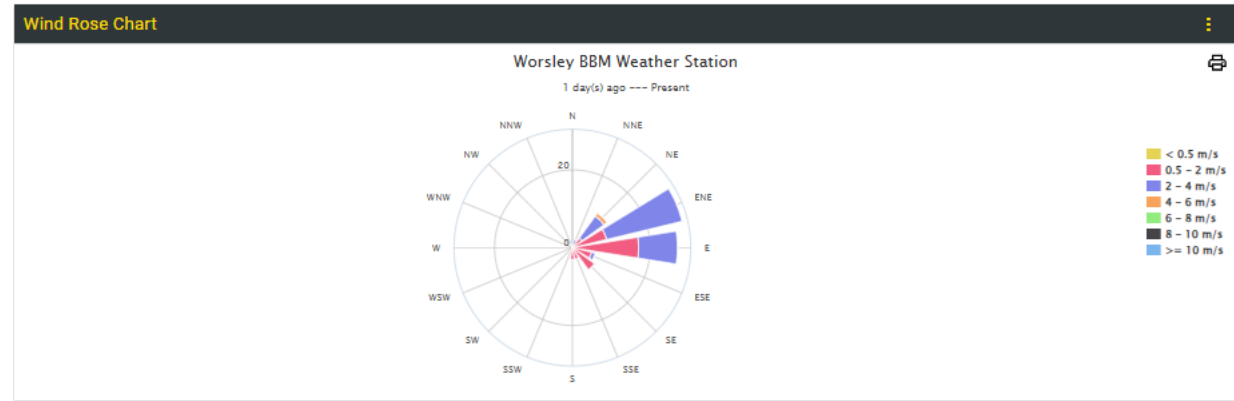
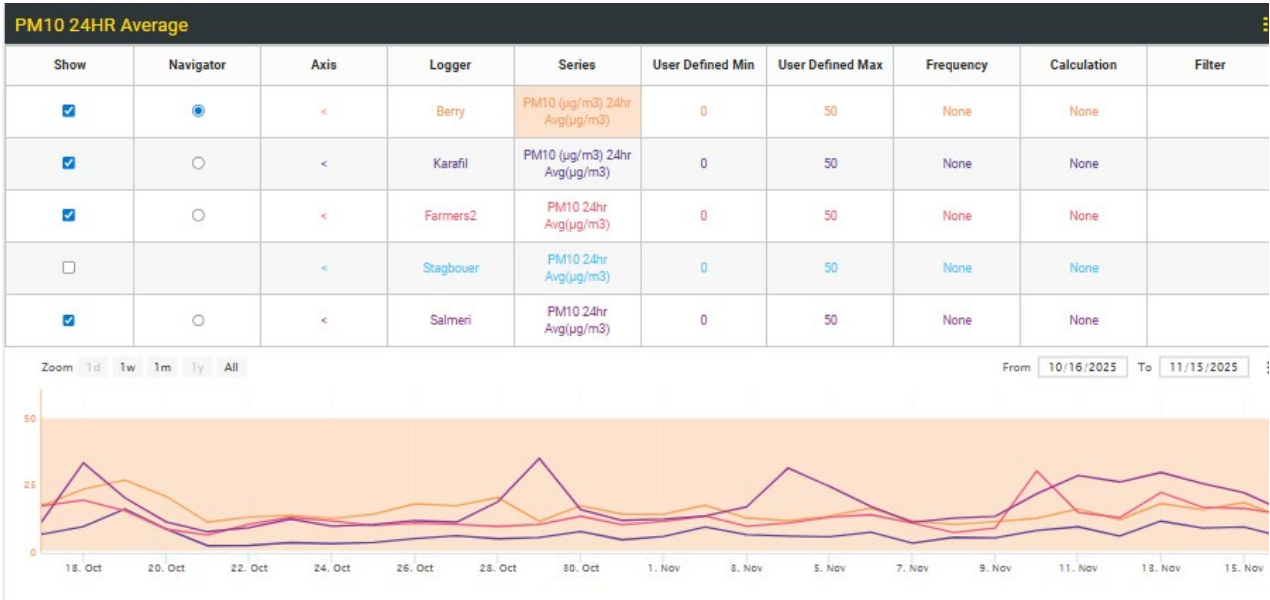
9. The licence holder must undertake the monitoring in Table 4 according to the specifications in that table. The licence holder shall record and investigate results that do not meet any target specified.

Table 4: Ambient air quality monitoring

Monitoring Point reference and location	Parameter	Target	Averaging Period	Frequency	Siting	Method
AQ1 - Must be located in the approximate location of AQ1 as shown in Figure 3	PM ₁₀	50 µg/m ³	24 hours	Continuous	AS/NZS 3580.1.1	AS/NZS 3580.9.8 or e-samplers when required ¹
AQ2 - Must be located in the approximate location of AQ2 as shown in Figure 3	PM ₁₀	50 µg/m ³	24 hours	Continuous	AS/NZS 3580.1.1	AS/NZS 3580.9.8 or e-samplers
AQ3 - Must be located in the approximate location of AQ3 as shown in Figure 3	PM ₁₀	50 µg/m ³	24 hours	Continuous	AS/NZS 3580.1.1	AS/NZS 3580.9.8 or e-samplers
AQ4 – Must be located in the approximate location of AQ4 as shown in Figure 3	PM ₁₀	50µg/m ³	24 hours	Continuous	AS/NZS 3580.1.1	AS/NZS 3580.9.8 or AS/NZS 3580.9.11 or e-samplers when required ¹



DUST RESULTS



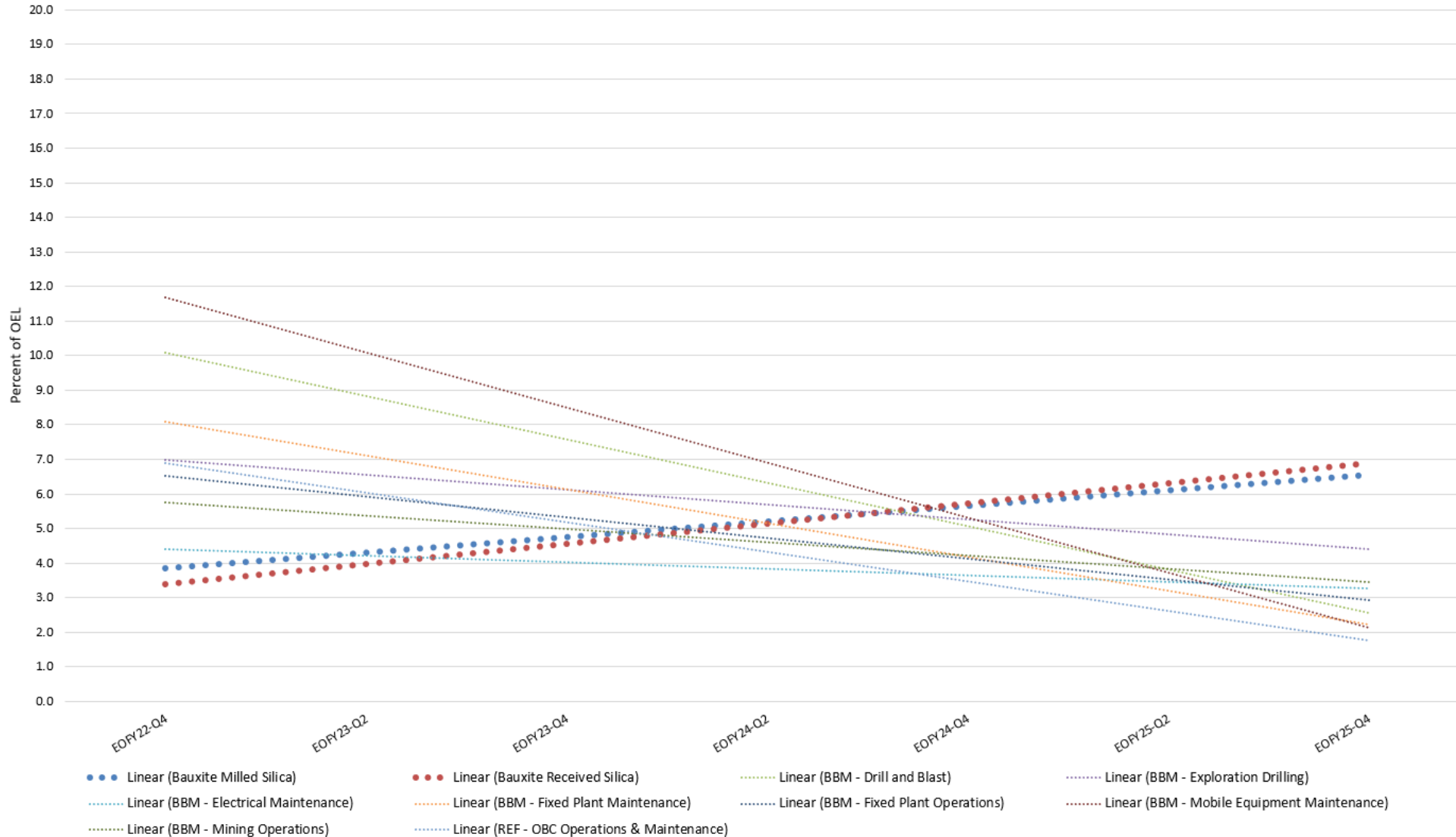
Dust logger feed into EQUiS

- Alerts are generated for exceedances
- Data is verified and validated by Benchmark
- Daily reports

UPDATE: RESPIRABLE CRYSTALLINE SILICA (RCS) EXPOSURE TRENDS



BBM Workforce RCS Exposure Trendlines



Notes:

- This is an update of data shared at the August 2024 CLC.
- RCS samples collected from 45 different workgroups (grouped into 8 SEGs) across BBM and the OBC.
- All SEGs are currently below 8% of the RCS Occupational Exposure Level (OEL) and continue to be routinely monitored.
- All workgroup exposure trendlines are continuing to drop even though slightly higher quartz concentrations have been observed in the ore received at the Refinery from the OBC and the milled ore.
- Results below 50% of the OEL are acceptable and require no additional controls to reduce exposure.

Note: Exposure data does not include RPE protection factors. This is normal practice, and it estimates exposure to workers who do not wear any RPE.

AIRBORNE BBM DUST ANALYSIS BY OCCUPATIONAL HYGIENIST



- Data Sources:
 - BBM Dust Sampling and Analysis Report 2021 – GHD Group
 - > 15 samples collected from Air Sampler adjacent to Crusher Building over a 3-month period in 2021
 - Bauxite Ore Trace Elements Report - South32 Worsley Alumina Process Laboratory
 - > Trace elements data collected between June 2020 and June 2025
- 33 Trace Elements Tested:
 - Aluminium, Antimony, Arsenic, Barium, Beryllium, Boron, Cadmium, Chloride, Chromium, Chromium (III), Chromium (VI), Cobalt, Copper, Gallium, Iron, Lead, Magnesium, Manganese, Mercury, Molybdenum, Nickel, Particulates (PM10), Silica (and Silicon), Selenium, Sodium, Sodium Carbonate, Sulphates, Thorium, Tin, Titanium Dioxide, Uranium, Vanadium, and Zinc.
- Results Compared Against:
 - Department of Water and Environment Regulation (DWER) – Ambient Air Quality Guidelines
 - Safe Work Australia – New 2026 Workplace Exposure Limits (WELs)
 - Australian Government – Toxicant Default Guideline Values (DGVs) for Fresh Water Quality
 - Australian Government – National Health and Medical Research Council - Australian Drinking Water Guidelines (ADWG)
 - World Health Organisation (WHO) – Drinking Water Quality Guidelines

SUMMARY OF HYGIENE DUST ANALYSIS RESULTS



Constituent	Average Results (ug/m3)	Maximum Results (ug/m3)	Maximum Results VS. DWER Ambient Air Quality Guidelines	Maximum Results VS. SWA Workplace Exposure Limits	Maximum results VS. Australian Freshwater Quality Guidelines	Maximum Results VS. Australian/WHO Drinking Water Guidelines
Aluminium (acid-soluble)	12.1667	30.0000	326.09%	1.50%	0.11%	0.02%
Antimony	0.0117	0.0520		0.01%	0.00%	0.00%
Arsenic	0.0013	0.0038	14.07%	0.04%	0.00%	0.00%
Barium	0.0061	0.0180		0.00%		0.00%
Beryllium	0.0011	0.0014	35.00%	7.00%		0.00%
Boron	0.0107	0.0140	0.00%	0.00%	0.00%	0.00%
Cadmium	0.0003	0.0003		0.03%	0.00%	0.00%
Chloride	1.3533	4.1000		0.14%		0.00%
Chromium	0.0591	0.2600		0.05%		0.00%
Chromium (III)	0.0550	0.2400	52.17%	0.05%	0.01%	0.00%
Chromium (VI)	0.0120	0.0590		0.12%	0.59%	0.00%
Cobalt	0.0040	0.0300	30.00%	0.15%	0.00%	0.00%
Copper	0.0096	0.0300	3.26%	0.02%	0.00%	0.00%
Gallium	0.0030	0.0030		0.00%	0.00%	
Iron	25.5467	79.0000		7.90%	0.06%	0.03%
Lead	0.0081	0.0260		0.05%	0.00%	0.00%
Magnesium	0.1600	0.3000		0.00%		0.00%
Manganese	0.0688	0.2500	178.57%	1.25%	0.00%	0.00%
Mercury	0.0002	0.0006		0.01%	0.00%	0.00%
Molybdenum	0.0033	0.0060	0.05%	0.00%	0.00%	0.00%
Nickel	0.0028	0.0090	6.43%	0.09%	0.00%	0.00%
Particles (PM10)	171.2600	440.1000	956.74%	14.67%		0.00%
Silica (and Silicon)	0.0300	0.0300	0.33%	0.06%		0.00%
Selenium	0.0026	0.0030		0.00%	0.00%	0.00%
Sodium	0.0026	0.0030		0.00%		0.00%
Sodium carbonate	1.0267	2.6000		0.09%		0.00%
Sulphates	2.5800	6.5000		0.22%		0.00%
Thorium	1.0133	1.8000		0.90%		0.00%
Tin	0.0080	0.0110		0.01%		0.00%
Titanium dioxide	0.0030	0.0030		0.00%		0.00%
Uranium	0.5333	1.5000		0.75%	0.30%	0.01%
Vanadium	0.0020	0.0020	0.22%	0.00%	0.00%	0.00%
Zinc	0.0535	0.1900		0.01%	0.01%	0.00%

Notes:

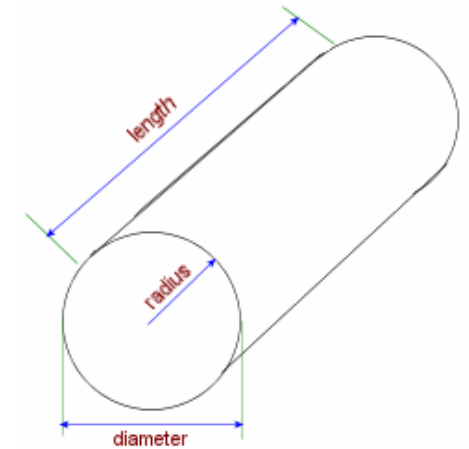
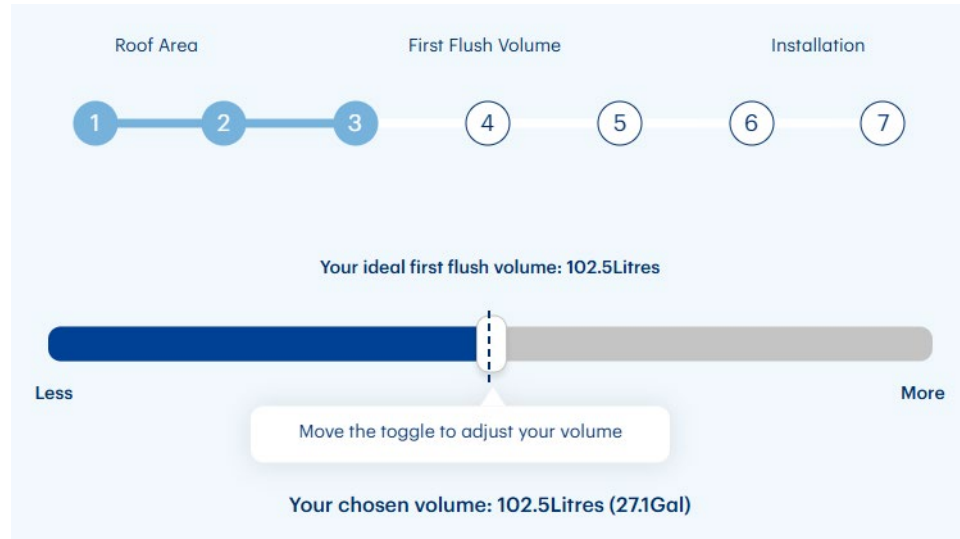
- Blank cells mean that no applicable guideline value exists for the element or for the applicable air quality or water quality criteria period.
- Comparison to SWA WELs assume the maximum 24-hour airborne dust concentrations occurred within only 8 hours.
- Comparison to water guidelines assume the maximum 24-hour airborne dust concentrations of each of the 33 elements could be fully dissolved (e.g. fully leached from the dust) into 1 litre of water, with no sediment present.

CONCLUSIONS

- Three elements had maximum dust concentrations greater than 50% of the DWER Ambient Air Quality Guidelines: Aluminium, Manganese, and total PM10 particulates.
 - Aluminium is extremely abundant in the earth's crust and has very low toxicity. Therefore, no health-based guideline value has been established.
 - Manganese is widely distributed in the earth's crust. Manganese (Mn) is an essential trace element required for normal growth and development in humans. Manganese neurotoxicity is known to occur as a result of very high manganese dust inhalation in occupational settings (e.g. mining and welding) over long periods. This would be hundreds of times higher than the levels observed in the dust.
 - The natural erosion of soil, sand and rock is the most common source of dust. Dust particles small enough to be inhaled (i.e. total PM10 particulates) may lead to irritation of the eyes, coughing, sneezing, hay fever, and asthma attacks.
- All the average and maximum results are:
 - Less than 15% of the Safe Work Australia 2026 Workplace Exposure Limits.
 - Less than 0.6% of the Australian Toxicant Default Guideline Values for Fresh Water Quality.
 - Less than 0.03% of the most conservative WHO and ADWG Health and Aesthetic Water Guidelines.
- Regardless of whether the dust occurs naturally, originates from the BBM mine, or comes from other human activities in the area, analysis of results show that the concentrations of all 33 bauxite ore elements are not harmful to human health through any of the possible exposure pathways; inhalation, ingestion, or skin contact.

HYGIENIST'S RAINWATER HARVESTING RECOMMENDATIONS

- Rainwater is usually safe to drink unless it has been contaminated or stored improperly.
 - Worsley's Occupational Hygienist shared information about keeping rainwater collection systems clean and safe. Refer to: https://www.healthywa.wa.gov.au/Articles/U_Z/Water-tanks-on-your-property as well as Chapter 10 of: <https://rainwaterharvesting.org.au/wp-content/uploads/2018/01/Rainwater-Handbook-v13-SAI-HB230-0304081.pdf>
- First flushing is a very important part of ensuring everything that collects on your roof when it is not raining for extended periods of time (e.g. as little as several weeks in the summer) is not transferred into your tank.
 - My house: I need to consider both roof size (~410m²) AND the volume of water sitting in all 120 metres of underground pipework (~942 litres). This means that my first flush to remove contaminants and stagnant water is about 1,050 litres of rainwater!



volume = Pi * radius² * length
 Enter two of the following, the radius/diameter, length, volume
 The remaining unknown values will be calculated.

Radius	<input type="text" value="0.05"/>
Diameter	<input type="text" value="0.1"/>
Length	<input type="text" value="120"/>
Volume	<input type="text" value="0.942477796076938"/>

EXCITING DISCOVERY: NEW POPULATION OF THE THREATENED COSSACK ORCHID



Learn more

www.south32.net/what-we-do/our-locations/australia/worsley-alumina/documents



A recent pre-clearance survey at the South32 Worsley Alumina's Boddington Bauxite Mine has uncovered something truly special - the identification of an additional population of the threatened Cossack orchid (*Caladenia dorrienii*).

The discovery was made during spring surveys, prompting Worsley Alumina to immediately notify the Department of Biodiversity, Conservation and Attractions (DBCA). Experts from DBCA and the Adopt an Orchid Project (ADORP) visited the site to confirm the species.

Following verification, Worsley Alumina acted quickly to safeguard the orchid. Under our Flora and Vegetation Management Plan, an immediate disturbance buffer was installed to ensure protection of each individual plant. These steps ensure that biodiversity is preserved while mining operations continue responsibly. Ongoing surveys within the area will confirm the extent of the population as flowering times can vary across each season.

Our commitment doesn't stop there. For example, we also manage the Quindanning orchid species (*Caladenia hopperiana*), working in partnership with Kings Park to collect seeds and symbiotic fungi for cryopreservation in Western Australia's native seed bank. Kings Park has successfully germinated seeds and is running trials to determine if these orchids can be grown in controlled environments - an important step toward long-term conservation.

Discoveries like these highlight our ongoing dedication to environmental stewardship and biodiversity conservation. Protecting these species is not just a regulatory requirement - it's a social responsibility that reflects our respect for the unique ecosystems of Western Australia.

Learn more about how South32 Worsley Alumina manages its environmental footprint:



ALUMINIUM STEWARDSHIP INITIATIVE

BIODIVERSITY & ECOSYSTEM SERVICES

ASI Performance Standard: 8.1 a & b

The entity shall:

- a. Assess the risk to and potential impacts on Biodiversity & Ecosystem Services
- b. Undertake a systematic review, in consultation with and with the participation of Affected Populations & Organisations to identify Priority Ecosystem Services that are relevant to Affected Populations & Organisations

ASI Performance Standard: 8.3

The entity shall:

- Implement measures that increase resource efficiency of operations
- Where Ecosystem Services of relevance to Affected Populations & Organisations:
 - When under the Entity's direct management & control, use the Biodiversity mitigation hierarchy to maintain access to & value & functionality of ecosystem services
 - When not under the Entity's direct management, work with other parties or within scope of influence to mitigate impacts on Priority Ecosystem Services

MINE REHABILITATION

ASI Performance Standard 8.7e

- Ensure the Mine Rehabilitation and closure plan is developed in Consultation with and, where possible, with the participation of Affected Populations and Organisations and designed by a Qualified Specialist

ALUMINIUM STEWARDSHIP INITIATIVE

Affected Populations

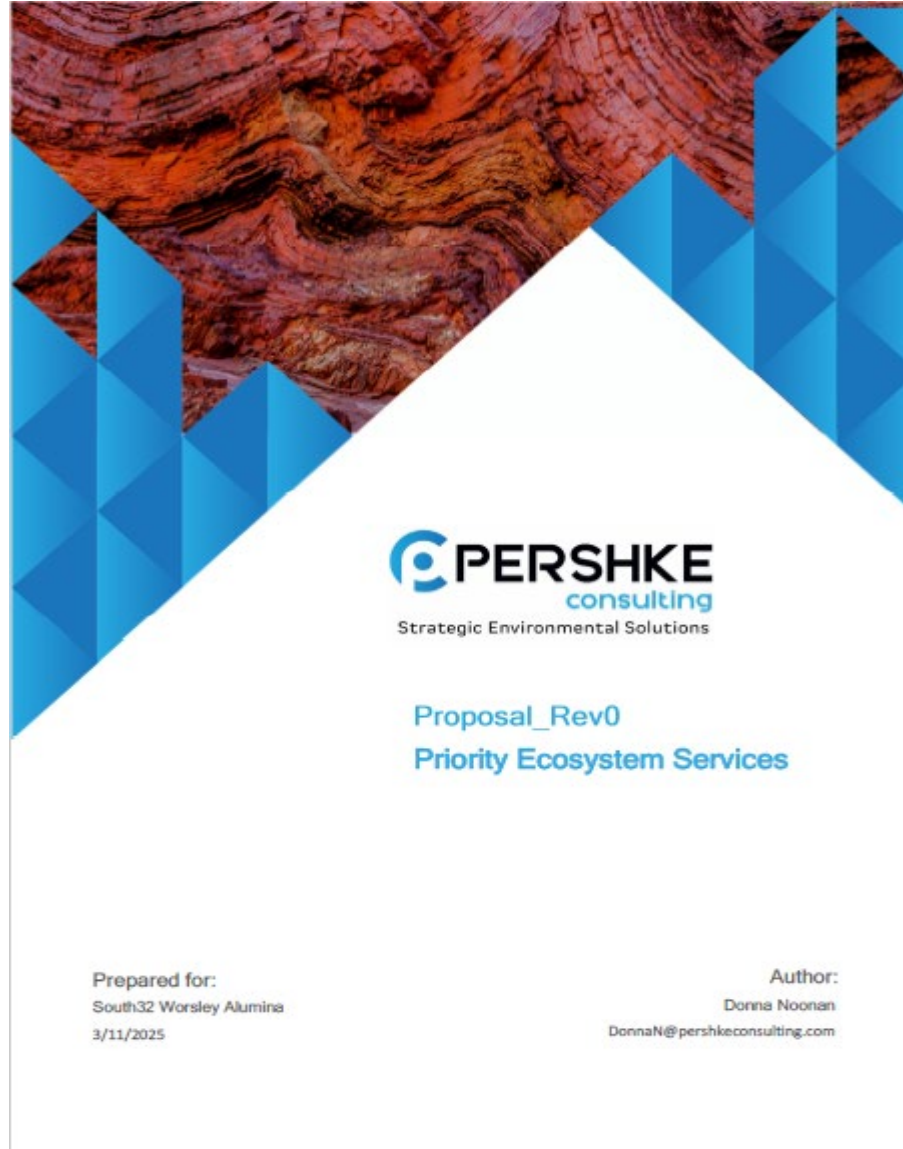
ASI Performance Standard: 9.1c

- A mapping of Affected Populations and Organisations to ensure Affected Populations and Organisations are:
 - I. Engaged by the Entity
 - II. Consulted about operational activities and potential significant Human Rights impacts and informed of the operation's Complaints Resolution Mechanism.

ASI Performance Standard: 9.1c

- The Entity shall respect, in ways appropriate to its size and circumstances, the legal and customary rights and interests of Affected Populations and Organisations in their lands, livelihoods and use of natural resources, including, as a minimum:
 - a. Implement a plan to identify, prevent, monitor, mitigate and account for any significant impacts, including health and safety, social and cultural Human Rights and environmental impacts resulting from its activities.
 - b. **Develop the plan in Consultation with and, where possible, with the participation of Affected Populations and Organisations.**
 - c. In accordance with the plan, commit resources to Local Community development.
 - d. Review the plan at least every 5 years.
 - e. Review the plan after any changes to the Business that alter Material environmental, social and governance risk(s).
 - f. Review the plan on any indication of a control gap.
 - g. Publicly disclose the latest version of the plan.
 - h. Explore with Affected Populations and Organisations opportunities to respect and support their livelihoods.

ALUMINIUM STEWARDSHIP INITIATIVE



- Phase 1 – Project Initiation & Knowledge Gap Assessment
- Phase 2 – Baseline Assessment
- Phase 3 – Stakeholder Engagement

The purpose of this phase is to identify and validate PES through structured engagement with affected communities. Engagement will build on existing relationships and utilise existing forums, including Worsley’s Community Liaison Committee in Boddington and Collie / Greater Bunbury. The final format of engagement will be determined as an outcome of Phase 1, however, it is understood that multiple rounds of engagement may be required, including:

- Initial consultation – to introduce the process and establish consultation readiness.
- Primary consultation – to identify PES.
- Post Risk consultation.
- Wrap up and reporting back to affected communities.

- Feedback from each engagement session will be integrated into reporting systems

- Phase 4 – Risk and Impact Assessment
- Phase 5 – Reporting and Communication

COMMUNITY UPDATE



COMMUNITY UPDATE

COMMUNITY COMPLAINTS

15 complaints FY26 - July/August 2025

15 complaints related to BBM:

- 3 x Dust
- 9 x Noise
- 1 x 1080 Poison Sign
- 1 x Blasting
- 1 x Trespassing

17 complaints FY26 - September/October 2025

13 complaints related to BBM:

- 5 x Dust
- 5 x Noise
- 1 x Traffic – Lower Hotham Road Traffic Management Plan reduced speed limit on public road due to proximity to construction, OBC traffic crossing, and deteriorating road conditions.
- 1 x Stakeholder Engagement – proactive notification sent to incorrect audience.
- 1 x Lighting – SW50 waste dump light was turned off immediately after complaint received.

OPT IN FOR NOTIFICATIONS

Advertisement in Boddington News October edition inviting community members who want to opt-in to receive community notifications via text or email.



The advertisement is divided into three main sections. The top left section features a yellow megaphone icon on a dark background, with the text 'KEY UPCOMING ACTIVITIES AT BBM'. Below this, it states that from September, BBM is accommodating around 170 workers at the Newmont camp, with a peak of 200 workers in December. It also mentions that buses will be used for worker transport, limiting light vehicles to 10. The bottom left section, on a yellow background, says 'SOUTH32 WORSLEY ALUMINA COMMUNITY UPDATE' and 'October 2025'. The top right section has a yellow header 'STAY INFORMED' and the text 'OPT IN FOR COMMUNITY UPDATES'. It encourages signing up for notifications about blasting, burns, traffic changes, and events. It provides contact details: 1800 555 958 or worsleycommunity@south32.net. A list of fields to provide includes Name, Phone, and Email. An icon of a laptop with a cursor is shown. The bottom right section, on a yellow background, says 'If you have any concerns or want to speak to South32 you can contact us at worsleycommunity@south32.net or contact South32 Boddington Bauxite Mine by phone on 1800 555 958.' and includes a speech bubble icon.

COMMUNITY INVESTMENT



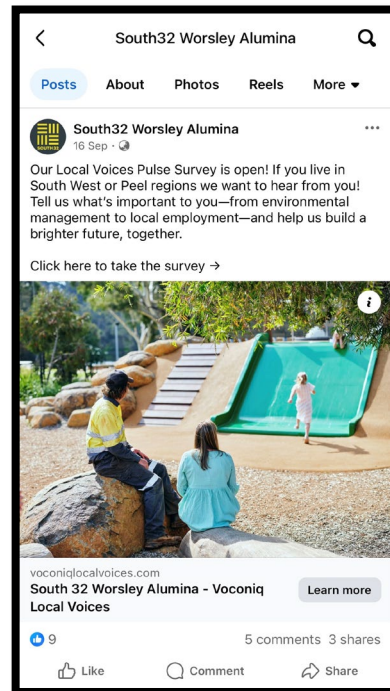
- Shire of Boddington 2025 Boddington Careers Expo
- Boddington District High School
 - Faction Athletics Day
 - RUOK Day
- BBM Rehabilitation Tours
- Boddington Golf Club Men's Open
- Boddington Lion's Rodeo
- Peel District Cycling Club



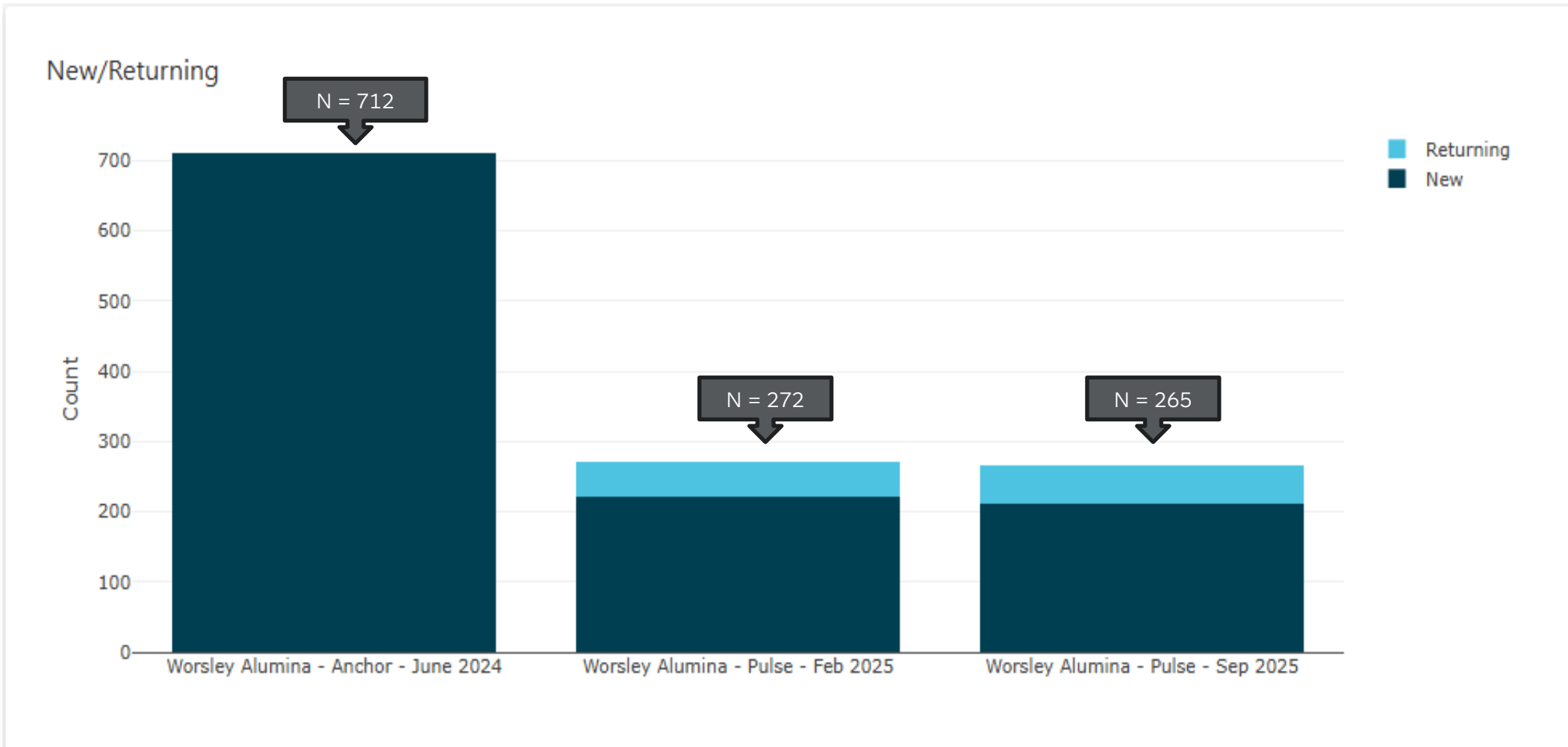
COMMUNITY UPDATE

Local Voices Pulse Survey has now closed.

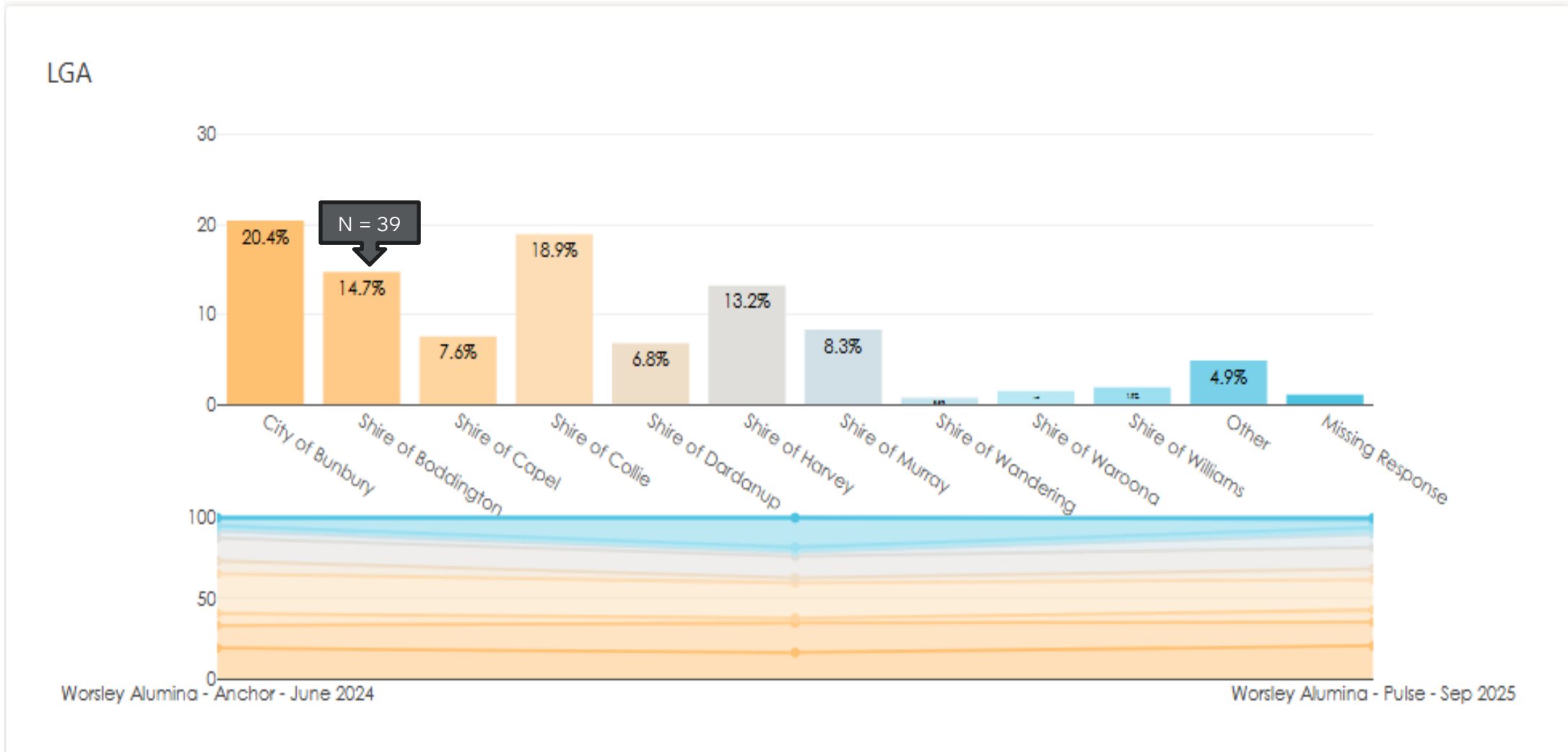
Survey advertising was promoted in the Boddington News, SouthWest Times, Collie News Bulletin, and social media.



LOCAL VOICES – PRELIMINARY DATA



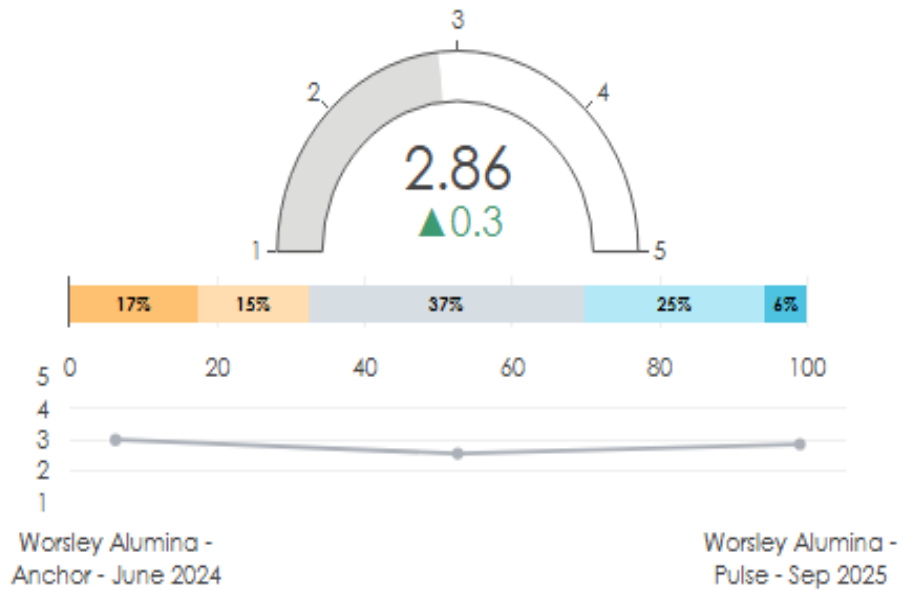
LOCAL VOICES – PRELIMINARY DATA



LOCAL VOICES – PRELIMINARY RESULTS

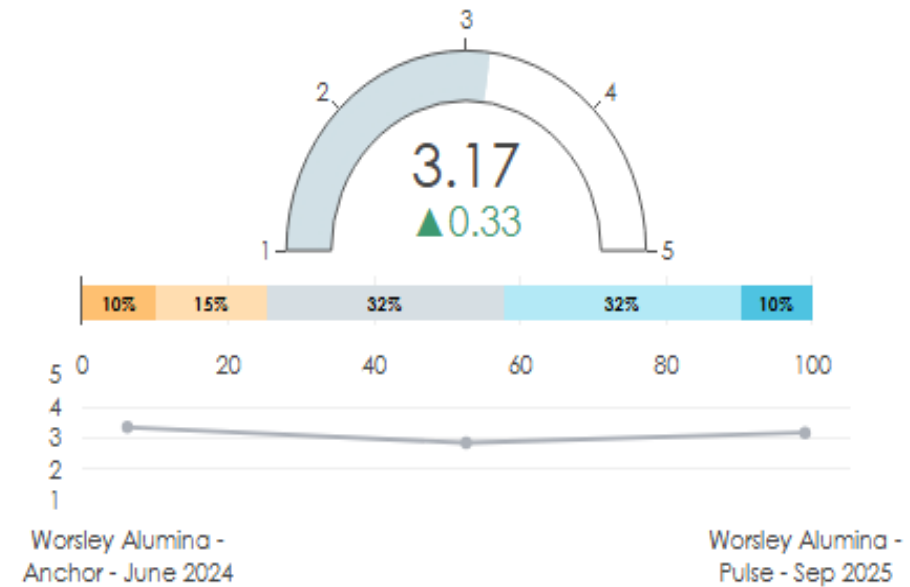
Trust

Trust the company to act responsibly



Acceptance

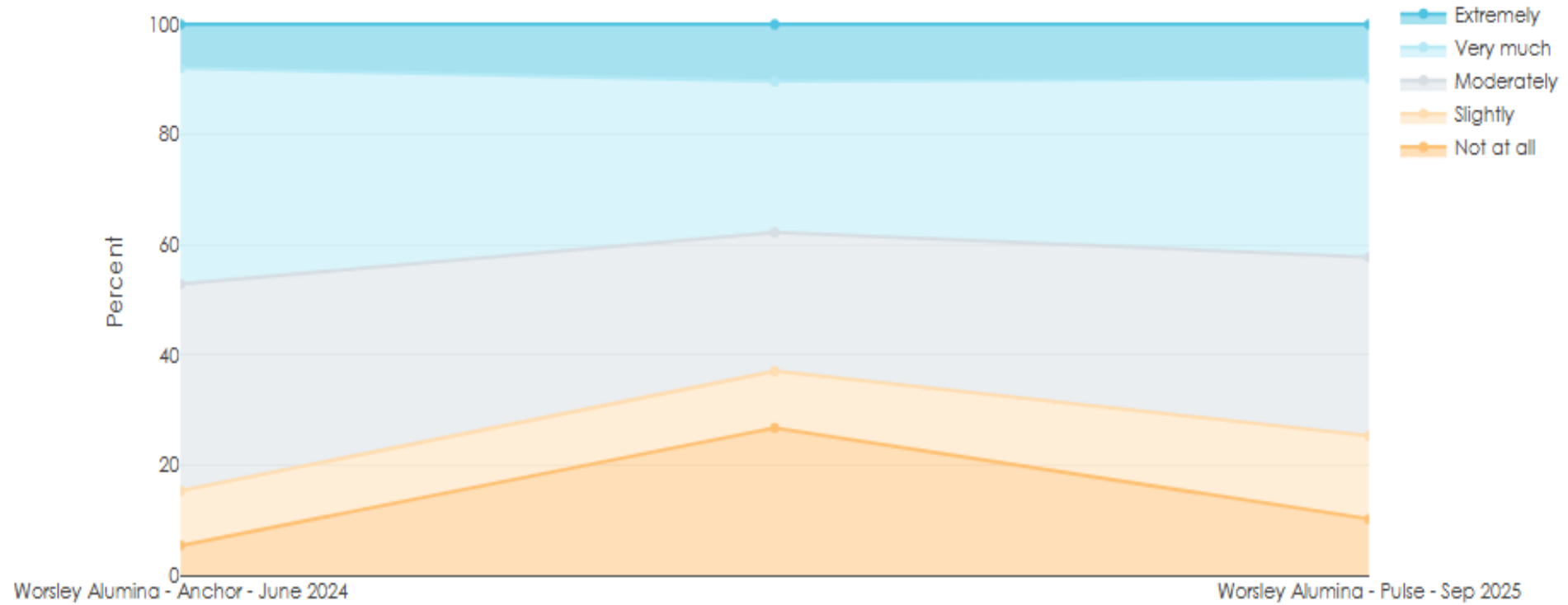
How much do you accept South32 Worsley Alumina in your community?



LOCAL VOICES – PRELIMINARY RESULTS

How much do you accept South32 Worsley Alumina in your community? (3)

Response Breakdowns Over Time

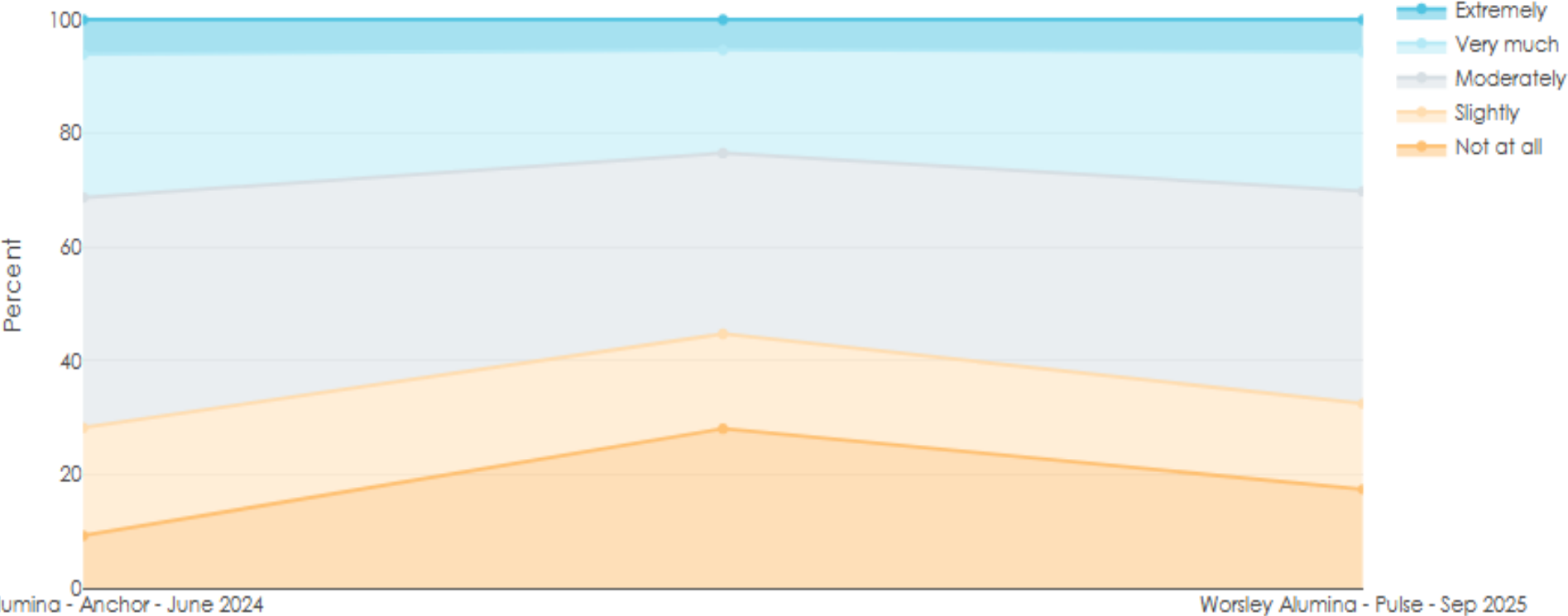


LOCAL VOICES – PRELIMINARY RESULTS



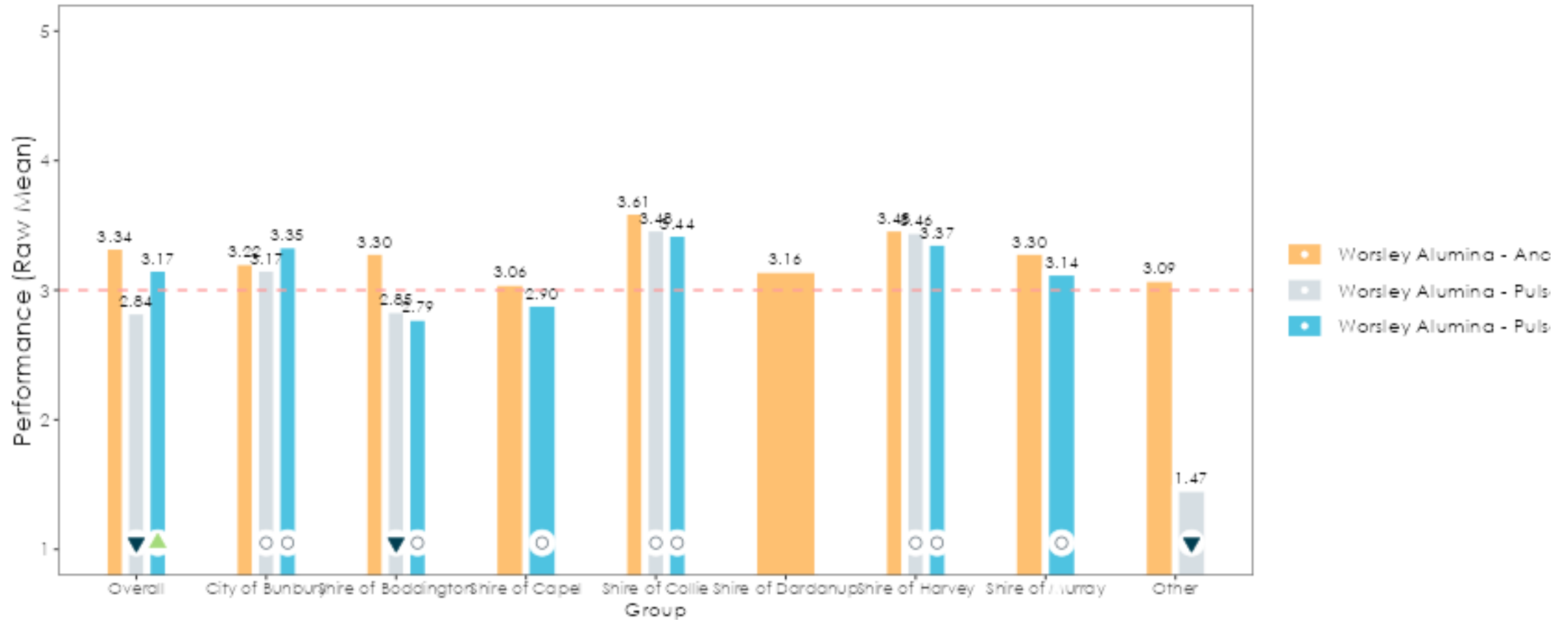
Trust the company to act responsibly (3)

Response Breakdowns Over Time



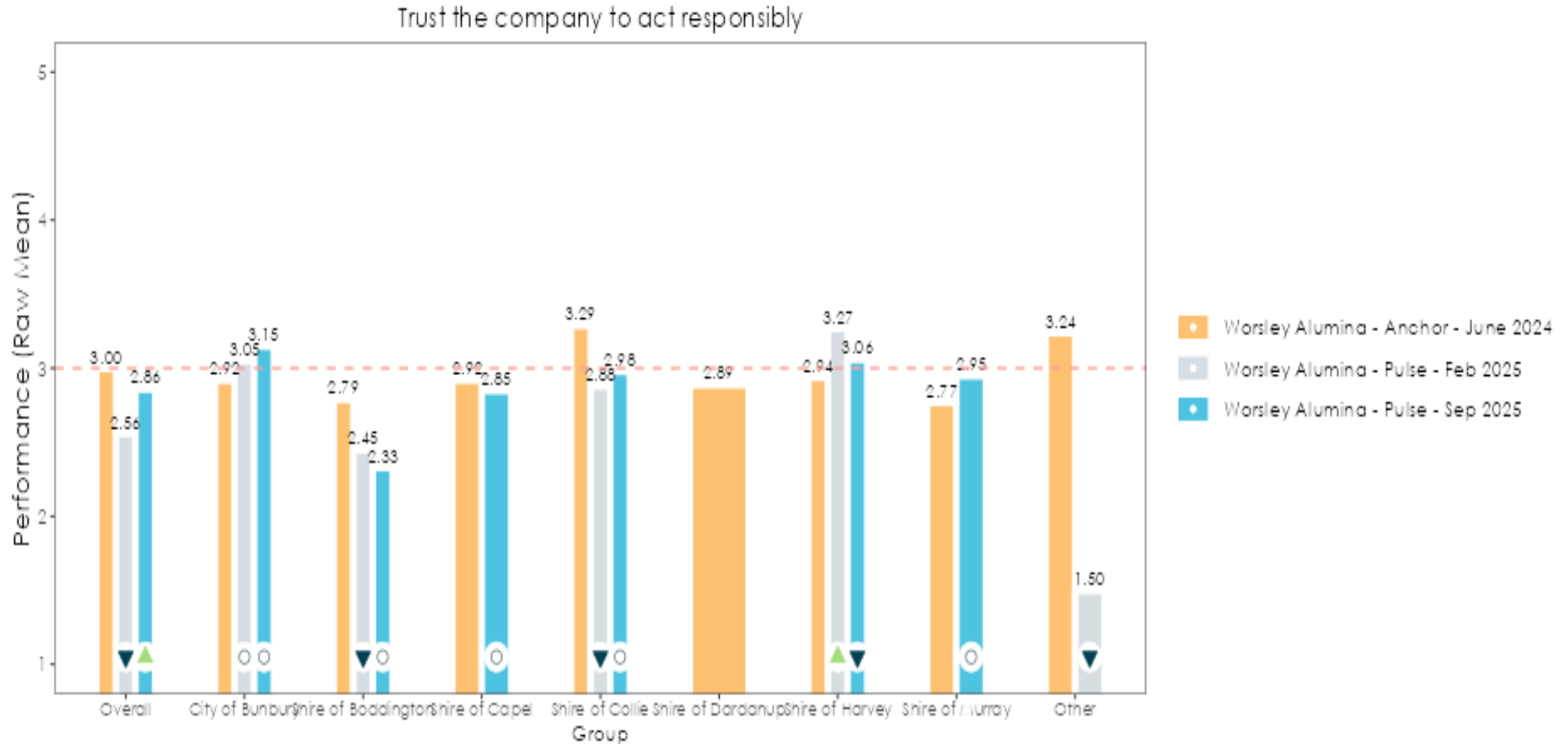
LOCAL VOICES – PRELIMINARY RESULTS

How much do you accept South32 Worsley Alumina in your community?



[Download as pdf](#)

LOCAL VOICES – PRELIMINARY DATA



LOCAL VOICES – PRELIMINARY DATA

	All	All	All	All	Shire of E	All
2	2025-09-15	Worsley Alumina - Pulse - Sep 2025	Additional Comments	South32 are failing to abide by the conditions of Ministerial Statement 1237. They regularly fail to disclose information requested by the public. They show no respect for first nations people.	Shire of Boddington	Not at all
7	2025-09-15	Worsley Alumina - Pulse - Sep 2025	Additional Comments	This forest is a biodiversity hotspot, sooo many rare animals and birds habitats and food. Your going to destroy perths drinking water and rivers .to many dirty deals done with government, epa,water ministers, destroying everything, climate emissions the list goes on. You are the main cause of extinction of our beautiful endangered starving black cockatoos SHAME ON SOUTH32 AND OUR USELESS GOVERNMENT, **** OFF	Shire of Boddington	Not at all
10	2025-09-18	Worsley Alumina - Pulse - Sep 2025	Additional Comments	I think they are well trained to give the right and non disruptive answers even if they don't believe them No different to politicians	Shire of Boddington	Moderately
12	2025-09-22	Worsley Alumina - Pulse - Sep 2025	Additional Comments	This is not the only place in the world that has bauxite. You are destroying the only Jarrah Forest in the world for a low grade bauxite killing thousands of marsupials. You should be ashamed of yourselves...	Shire of Boddington	Not at all
14	2025-09-29	Worsley Alumina - Pulse - Sep 2025	Additional Comments	The safeguards to stop environmental damage are not adequately regulated, there are a number of reports from the governor general's office stating her concerns on this matter. Very concerning also is that South32 are allowed to 'self-regulate' to get back on track. Who is regulating them at all!?!?	Shire of Boddington	Not at all
16	2025-09-30	Worsley Alumina - Pulse - Sep 2025	Additional Comments	We need to phase out mining in the jarrah forest before it is irreversibly damaged.	Shire of Boddington	Not at all
18	2025-10-02	Worsley Alumina - Pulse - Sep 2025	Additional Comments	I am extremely disappointed in the lack of recruitment of experienced locals. Both my husband and myself have tried for over 10 years to gain a role. We apply all the time - I am an OHS Manager/Professional I cannot even land a local job and my husband has only just had work out at the mine in the last 12 months - but with Charles Hull. Why is this we are both extremely experienced both been in mining for over 20 - 25 years. We just don't get a look in. Also I have a business in town part time but there is no way to get advertising into South 32 to try and attract your people into town to spend money - Is there not a local business electronic dashboard they can provide to their people to help promote all the small businesses in town. So much economic money leaves the town with DIDO	Shire of Boddington	Extremely
20	2025-10-07	Worsley Alumina - Pulse - Sep 2025	Additional Comments	They are not honest with environmental issues and try to hide amongst gobbledygook and feel money covers everything. The Govt approve because of money.	Shire of Boddington	Slightly

COMMUNITY – CLC PROFILING

Why

Sharing who the members are demonstrates openness and accountability.

It shows the committee is made up of real, local people who represent community interests rather than being a “closed group.”

Public profiles help validate that members have relevant experience or community ties.

It reassures stakeholders that decisions and feedback come from diverse, informed voices.

Profile – please email Chrissy with the below

Headshot - adds a personal touch; supply a professional headshot or book a time with Chrissy.

Name

Role: e.g. Chairperson, Community Representative

Affiliation: e.g. local business, school, resident, etc.

Short Bio: 2–3 sentences about your background and community involvement

How community members can reach you: provide your preferred email, phone or business name/address

Profiling will be printed in Boddington News – Jan/Feb 2026

