



**LONGWALLS 22 AND 23
AREA 3C
SUBSIDENCE
MANAGEMENT PLAN**



EXECUTIVE SUMMARY

Dendrobium Coal Pty Ltd, a wholly owned subsidiary of South32 Ltd (South32), operates underground coal mining operations at Dendrobium Mine, located in the Southern Coalfield of New South Wales. The Dendrobium and Appin mines operate as Illawarra Metallurgical Coal (IMC). Longwalls from the Wongawilli Seam have been mined previously in Areas 1, 2 and 3A, with current operations in Area 3B.

The socio-economic benefits to the region and the State of New South Wales from underground mining at IMC's Dendrobium and other operations is significant. IMC operations:

- Employ approximately 1,800 people, of which 90% are based locally;
- Spend over \$236.7M in 2020 with more than 400 locally based businesses;
- Contribute \$0.03 per tonne of saleable coal to community trusts supporting community projects; and
- Contribute approximately \$95 million in royalties each year (with approximately \$54 million from the Dendrobium Mine).

IMC is the most significant metallurgical coal producer in the region, providing local access to a product essential to the BlueScope steelworks.

IMC was granted Development Consent by the NSW Minister for Planning for the Dendrobium Project 20 November 2001.

The Independent Expert Panel for Mining in the Catchment's Report Part 1 (IEP) (2019a) recommended that any Subsidence Management Plan (SMP) application consider the potential implications for water quantity of faulting, basal shear planes and lineaments and that a risk assessment be included in applications to extract coal within Catchment Special Areas.

A risk assessment has been completed to identify hazards and existing controls associated with mining operations in the Special Areas and to make recommendations for further controls where appropriate. The Longwalls 22 and 23 SMP and risk assessment addresses key catchment features (groundwater, Cordeaux Reservoir, Wongawilli Creek, Cordeaux River, swamps and tributaries) in relation to the following concerns (where relevant):

- Surface subsidence and sub-surface ground movements;
- Valley closure and basal shear planes;
- Lineaments, faults and dykes; and
- Groundwater draw down.

The following statements from the IEP Report Part 1 (2019a) identify that there has been no observed material impacts to Sydney's drinking water supplies due to mining in the catchment:

"Reservoir leakage rates – there is no measured evidence of significant long-term leakage from reservoirs due to mining in the Special Areas."

"Watercourse bed leakage (at catchment scale) – from material presented to the Panel, there remains no strong evidence that cracking of watercourse beds leads to significant losses of water at catchment scales relevant for water supplies."

While the potential for mining to cause impacts within the Special Areas requires special attention, the localised impacts that have been observed need to be considered objectively and in the context of the broader catchment.

The IEP's estimate of average surface water diversion of 3 ML/day at the Dendrobium Mine equates to 0.2% of the 1.5 billion litres of drinking water provided to customers each day by Sydney Water (IEP 2019a). IEP Report Part 2 (2019b) recommended an inter-agency working group be established with the task of identifying acceptable levels of surface water loss due to mining.

Table of Contents

EXECUTIVE SUMMARY	1
1 INTRODUCTION.....	1
1.1 PROJECT BACKGROUND.....	1
1.2 SCOPE	1
1.3 STUDY AREA	1
1.4 OBJECTIVES.....	2
1.5 SPECIALIST ASSESSMENTS	2
1.6 CONSULTATION.....	3
2 PLAN REQUIREMENTS	5
2.1 DENDROBIUM DEVELOPMENT CONSENT DA60-03-2001.....	5
2.2 DENDROBIUM AREA 3C SMP	6
2.3 LEASES AND LICENCES	6
3 MONITORING	7
3.1 SURFACE WATER QUALITY	7
3.2 SURFACE WATER LEVEL AND FLOW	7
3.3 UPLAND SWAMP NEAR-SURFACE GROUNDWATER AND SOIL MOISTURE.....	7
3.4 GROUNDWATER	7
3.5 POOLS AND CONTROLLING ROCKBARS	8
3.6 LANDSCAPE AND PHOTO POINT MONITORING	8
3.7 SLOPES AND GRADIENTS	8
3.8 ERODIBILITY	9
3.9 FLORA, FAUNA AND ECOSYSTEM FUNCTION.....	9
3.10 CULTURAL HERITAGE	10
3.11 BUILT FEATURES.....	10
3.11.1 Unsealed Roads and Tracks	10
3.11.2 330 kV Transmission Line.....	11
3.11.3 33 kV Powerline.....	11
3.11.4 Dams and Reservoirs.....	11
3.12 REPORTING	11
4 PERFORMANCE MEASURES AND INDICATORS	12
4.1 IMPACT MECHANISMS.....	12
4.2 RISK ASSESSMENT	14
5 MANAGEMENT AND CONTINGENCY PLAN.....	15
5.1 OBJECTIVES.....	15
5.2 TRIGGER ACTION RESPONSE PLAN	15
5.3 AVOIDING AND MINIMISING	16
5.4 MITIGATION AND REHABILITATION.....	17
5.4.1 Sealing of Rock Fractures.....	17
5.4.2 Injection Grouting	17
5.4.3 Erosion Control.....	18
5.4.4 Surface Treatments and Water Spreading	20
5.4.5 Gas Release	21
5.4.6 Water Quality	21
5.4.7 Alternative Remediation Approaches	21
5.4.8 Monitoring Remediation Success.....	22

5.5	BIODIVERSITY OFFSET STRATEGY	22
5.6	RESEARCH	22
5.7	CONTINGENCY AND RESPONSE PLAN	22
6	INCIDENTS, COMPLAINTS, EXCEEDANCES AND NON-CONFORMANCES	24
6.1	INCIDENTS	24
6.2	COMPLAINTS HANDLING.....	24
6.3	NON-CONFORMANCE PROTOCOL	24
7	PLAN ADMINISTRATION.....	25
7.1	ROLES AND RESPONSIBILITIES	25
7.2	RESOURCES REQUIRED	26
7.3	TRAINING	26
7.4	RECORD KEEPING AND CONTROL	26
7.5	MANAGEMENT PLAN REVIEW	26
8	REFERENCES AND SUPPORTING DOCUMENTATION	28

Tables

Table 2-1	Dendrobium Development Consent (DA-60-03-2001) Conditions relevant to Area 3C	5
Table 4-1	Subsidence Impact Performance Measures	12
Table 4-2	Summary of subsidence effects, impacts and consequences for surface flows, storages and swamp hydrology (IEP 2019b)	13

Figures

Figure 1-1	Dendrobium Area 3C – Longwalls 22 and 23 Study Area	4
Figure 5-1	Rockbar Grouting in the Georges River	18
Figure 5-2	Square Coir Logs for Knick Point Control	19
Figure 5-3	Installation of Square Coir Logs.....	19
Figure 5-4	Trenching and Positioning of the First Layer of Coir Logs and Construction of a Small Dam in a Channel	20
Figure 5-5	Small Coir Log Dams with Fibre Matting.....	20
Figure 5-6	Round Coir Logs Installed to Spread Water	21

Appendices

Appendix 1 – Longwalls 22 and 23 - Approved Mine Plan DEN-01-8014
Appendix 2 – Longwalls 22 and 23 - Surface Features DEN-01-7981
Appendix 3 – Swamp Impact Monitoring, Management and Contingency Plan
Appendix 4 – Watercourse Impact Monitoring, Management and Contingency Plan
Attachment A – Aquatic Flora and Fauna Review
Attachment B – Groundwater Assessment
Attachment C – Subsidence Predictions and Impact Assessments
Attachment D – Risk Assessment
Attachment E – Surface Water Assessment
Attachment F – Terrestrial Ecology Assessment
Attachment G – Aboriginal Cultural Heritage Assessment

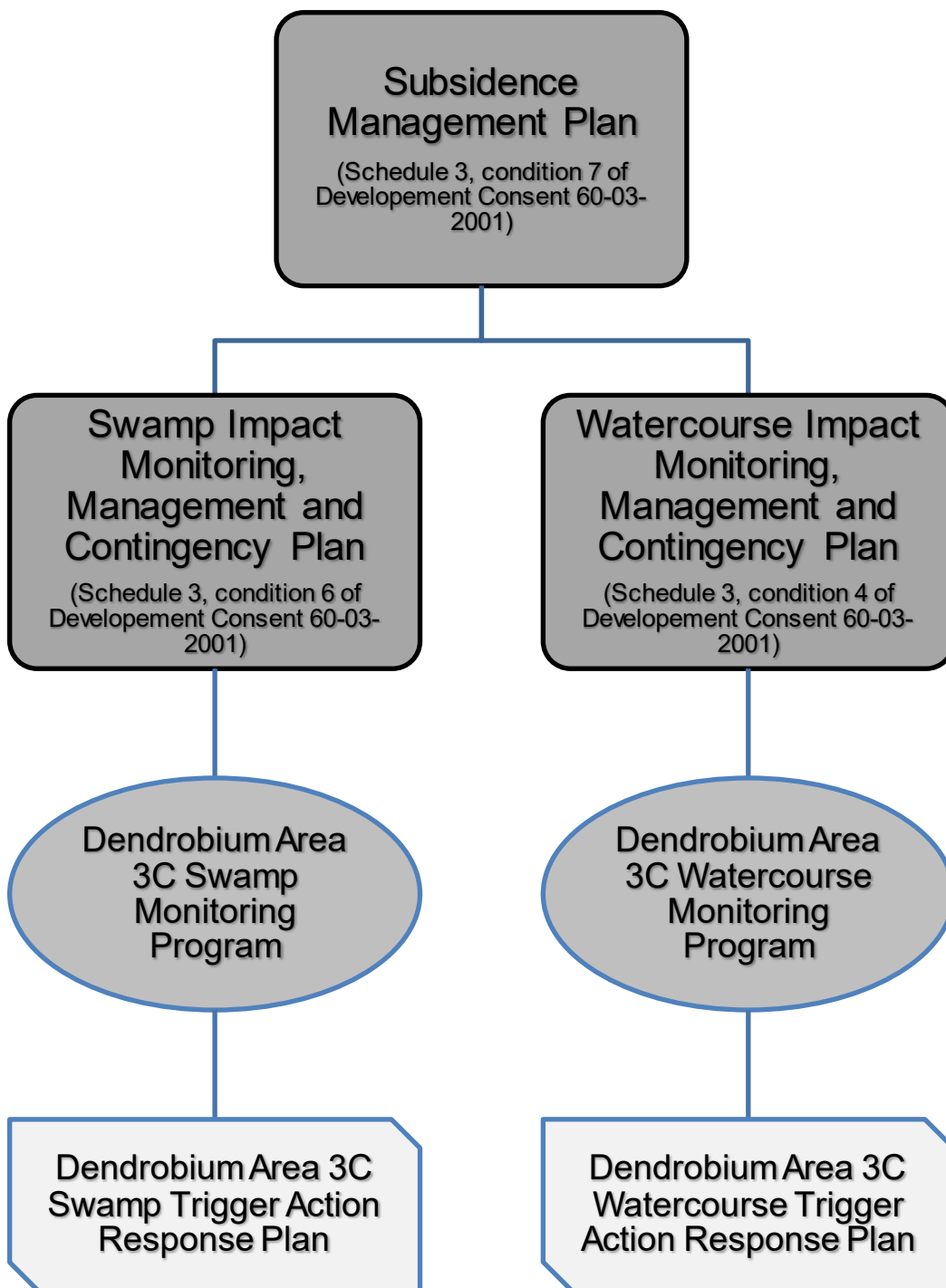
Attachments

- Attachment A – Aquatic Flora and Fauna Review
- Attachment B – Groundwater Assessment
- Attachment C – Subsidence Predictions and Impact Assessments
- Attachment D – Risk Assessment
- Attachment E – Surface Water Assessment
- Attachment F – Terrestrial Ecology Assessment
- Attachment G – Aboriginal Cultural Heritage Assessment

Review History

Revision	Description of Changes	Date	Approved
1	New Document	June 2021	GB
2	Administrative updates to SIMMCP and WIMMCP	September 2021	GB

Flow chart 1 – SMP, SIMMCP and WIMMCP interactions



1 INTRODUCTION

1.1 Project Background

Illawarra Metallurgical Coal (IMC) operates underground coal mining operations at Dendrobium Mine, located in the Southern Coalfield of New South Wales. Longwalls from the Wongawilli Seam have been mined in Areas 1, 2 and 3A with current operations in Area 3B.

IMC was granted Development Consent by the NSW Minister for Planning for the Dendrobium Project on 20 November 2001. In 2007, IMC proposed to modify its underground coal mining operations and the NSW Department of Planning advised that the application for the modified Area 3 required a modification to the original consent. The application followed the process of section 75W of the *Environmental Planning and Assessment Act 1979* (EP&A Act) and required the submission of a comprehensive Environmental Assessment (Cardno 2007). The Environmental Assessment (EA) described the environmental consequences likely from cracking and diversion of surface water as a result of the proposed mining. These impacts included diversion of flow, lowering of aquifers, changes to habitat for threatened species as well as other impacts and environmental consequences.

On 8 December 2008, the Minister for Planning approved a modification to DA_60-03-2001 for Dendrobium Underground Coal Mine and associated surface facilities and infrastructure under section 75W of the EP&A Act.

Schedule 3, Condition 7 of the Development Consent requires the development of a Subsidence Management Plan (SMP) for approval prior to carrying out mining operations that could cause subsidence.

1.2 Scope

This SMP has been prepared for Dendrobium Area 3C Longwalls 22 and 23, and complies with the Dendrobium Development Consent Schedule 3, Condition 7 as provided below.

7. Prior to carrying out any underground mining operations that could cause subsidence in either Area 3A, 3B or 3C, the Applicant must prepare a Subsidence Management Plan (SMP) to the satisfaction of the Secretary and the DRG. Each such SMP must:
- (a) integrate ongoing management of Areas 1 and 2;
 - (b) integrate the Watercourse and Swamp Impact Monitoring, Management and Contingency Plans required under conditions 4 and 6;
 - (c) include monitoring of subsidence effects;
 - (d) include a WaterNSW Assets Protection Plan;
 - (e) include monitoring, management, and contingency plans for all other significant natural features and all significant man made features which may be impacted by subsidence, including:
 - landscape (including cliffs and steep slopes);
 - groundwater (see condition 13);
 - terrestrial flora and fauna and ecology (including all threatened species assessed as being likely to be significantly affected by the development and their habitats);
 - Aboriginal and other cultural heritage (see condition 12); and
 - electrical, communications and other infrastructure;
 - (f) be prepared in consultation with OEH, WaterNSW and DRG;
 - (g) be approved prior to the carrying out of any underground mining operations that could cause subsidence in the relevant Area; and
 - (h) be implemented to the satisfaction of the Secretary and the DRG.

1.3 Study Area

The Study Area is defined as the surface area that could be affected by the mining of Longwalls 22 and 23 (**Figure 1-1**). The extent of the Study Area has been calculated by combining the areas bounded by the following limits:

- The 35° angle of draw line from the extents of Longwalls 22 and 23;

- The predicted limit of vertical subsidence, taken as the 20 mm subsidence contour, resulting from the extraction of the longwall; and
- The natural features located within 600 m of the extent of the longwall mining area, in accordance with Schedule 3, Condition 8(d) of the Development Consent.

The depths of cover to the Wongawilli Seam vary between 290 m along a tributary to Lake Cordeaux above the commencing end of Longwall 23, and 390 m along the ridgeline above the maingate of Longwall 23.

The 35° angle of draw line, therefore, has been determined by drawing a line that is a horizontal distance varying between 200 m and 275 m around the extents of the longwall voids.

The predicted limit of vertical subsidence, taken as the predicted total 20 mm subsidence contour, has been determined using the calibrated Incremental Profile Method (IPM), which is described in MSEC (2021). The predicted incremental 20 mm subsidence contour is located entirely within the 35° angle of draw (**Figure 1-1**).

The features that are located within the 600 m boundary that are predicted to experience valley related movements and could be sensitive to these movements have been included in the assessments provided in this report. These features include the streams, upland swamps and Aboriginal heritage sites.

There are additional features that are located outside the 600 m boundary that could experience either far-field horizontal or valley related effects. The surface features that could be sensitive to such movements have been identified and have also been included in the assessments provided in this report.

1.4 Objectives

The objective of this SMP and associated documents is to:

- Describe a system to adequately manage subsidence risks in a timely manner and to demonstrate IMC's capability to manage subsidence.
- Clearly state the objective of what is to be achieved for both systems and individual plans.
- Outline the systems used to establish monitoring mechanisms.
- Outline the systems to ensure ongoing analysis of monitoring information is used to implement management actions in a timely manner.
- Clearly define the necessary trigger levels and response actions.
- Assess the likelihood and scale of impact and any requirements for statutory approvals.
- Demonstrate preparedness for impacts outside of predictions.
- Carry out remediation works in a manner that protects the ecological values of the area and re-establishes the ecological values of an area to the greatest practicable extent.
- Monitor and report on the effectiveness of the SMP.

The mine plan has been optimised to maximise the extraction of the resource and minimise subsidence impacts to sensitive features. This SMP is to comply with the Dendrobium Development Consent conditions.

1.5 Specialist Assessments

The following specialist assessments have been prepared to support the Longwalls 22 and 23 SMP.

Attachment	Addressed in Document
Attachment A	Aquatic Flora and Fauna Review – August 2021 (Cardno 2021)
Attachment B	Longwalls 22 and 23 Groundwater Assessment – July 2021 (Watershed Hydrogeo 2021)
Attachment C	Subsidence Predictions and Impact Assessments – July 2021 (MSEC 2021)
Attachment D	Risk Assessment Report – July 2021 (Axys 2021)

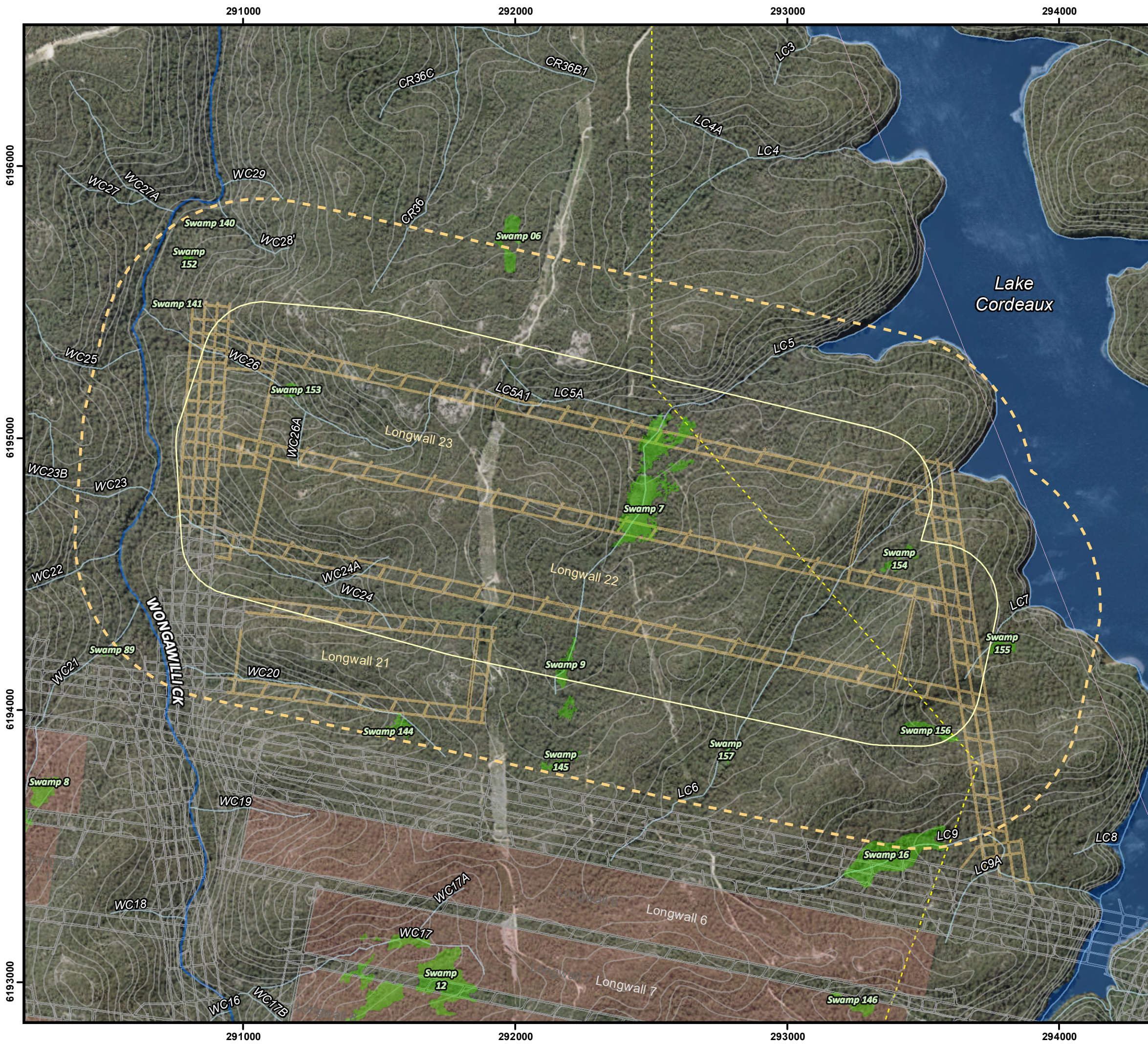
Attachment E	Assessment of Surface Water Flow and Quality Effects of Proposed Dendrobium Longwalls 22 and 23 – July 2021 (HGEO 2021)
Attachment F	Terrestrial Ecology Assessment – August 2021 (Niche 2021b)
Attachment G	Aboriginal Cultural Heritage Assessment

1.6 Consultation

The Dendrobium SMPs and other management plans have been developed by IMC in consultation with:

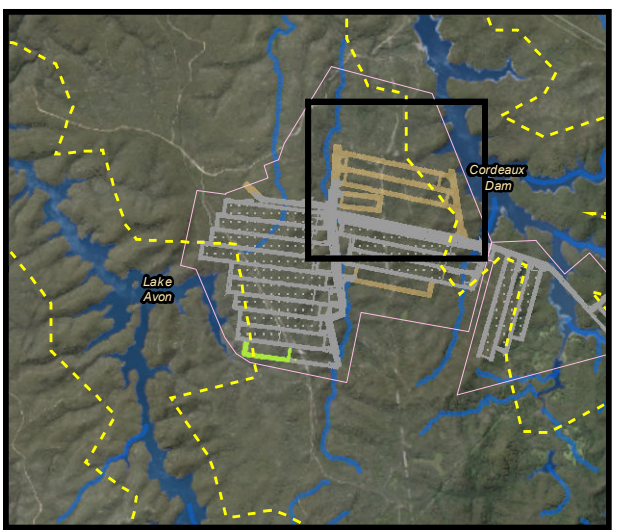
- Department of Planning, Infrastructure and Environment (DPIE);
- Biodiversity Conservation Division (BCD) within DPIE;
- HeritageNSW;
- Resources Regulator; and
- WaterNSW.

The SMP and other relevant documentation are available on the IMC website (Schedule 8, Condition 11).



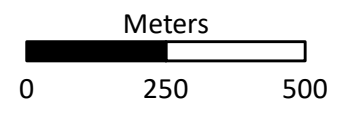
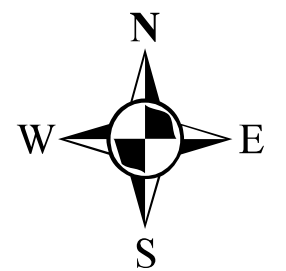
DENDROBIUM
Longwalls 22 and
23 Watercourses
and Swamps
Figure 1-1

- Study Area (35 deg Angle of Draw)
- Study Area (600m Boundary)
- Swamp
- 10m Contours
- Creeks
- Tributaries
- Existing Mine Workings
- Proposed Longwall Layout
- Dendrobium Goaf
- Dam Safety NSW Notification Areas
- Dendrobium Development Consent Area



Date: April, 2021
 Author: B. Agland

Version 1
 Horizontal Datum
 MGA - Zone 56



2 PLAN REQUIREMENTS

Extraction of coal from Longwalls 22 and 23 will be in accordance with the conditions set out in the Dendrobium Development Consent, SMP Approvals and conditions attached to relevant mining leases.

Baseline studies have been completed within the Study Area and surrounds to record biophysical characteristics. Monitoring is conducted in the area potentially affected by subsidence from the extraction of Longwalls 22 and 23. The monitoring in these areas will be based on the Before After Control Impact (BACI) design criteria.

The Area 3C monitoring and assessment programs will provide ongoing data for the areas and features potentially affected by the mining of Longwalls 22 and 23 and previous longwalls.

2.1 Dendrobium Development Consent DA60-03-2001

The Dendrobium Underground Coal Mine (DA 60-03-2001) modification was approved under Section 75W of the EP&A Act 1979 on 8 December 2008 (Modification 8). **Table 2-1** lists the Conditions of Consent relevant to the Area 3C SMP.

Table 2-1 Dendrobium Development Consent (DA-60-03-2001) Conditions relevant to Area 3C

Development Consent Condition
<p>Schedule 3 - Condition 2</p> <p>The Applicant shall ensure that underground mining operations do not cause subsidence impacts at Sandy Creek and Wongawilli Creek other than "minor impacts" (such as minor fracturing, gas release, iron staining and minor impacts on water flows, water levels and water quality) to the satisfaction of the Secretary.</p>
<p>Schedule 3 - Condition 3</p> <p>The Applicant shall ensure the development does not result in reduction (other than negligible reduction) in the quality or quantity of surface water or groundwater inflows to Lake Cordeaux or Lake Avon or surface water inflow to the Cordeaux River at its confluence with Wongawilli Creek, to the satisfaction of the Secretary.</p>
<p>Schedule 3 - Condition 4 (a) to (i)</p> <p>Prior to carrying out any underground mining operations that could cause subsidence in either Area 3A, Area 3B or Area 3C, the Applicant shall prepare a Watercourse Impact Monitoring, Management and Contingency Plan to the satisfaction of the Secretary.</p>
<p>Schedule 3 – Condition 6 (a) to (i)</p> <p>Prior to carrying out any underground mining operations that could cause subsidence in either Area 3A, Area 3B or Area 3C, the Applicant shall prepare a Swamp Impact Monitoring, Management and Contingency Plan to the satisfaction of the Director-General. Swamp Impact, Monitoring, Management and Contingency Plan</p>
<p>Schedule 3 - Condition 7</p> <p>Prior to carrying out any underground mining operations that could cause subsidence in either Area 3A, 3B or 3C, the Applicant shall prepare a Subsidence Management Plan (SMP) to the satisfaction of the Secretary and the DRE. Each such SMP must:</p> <ul style="list-style-type: none"> (a) integrate ongoing management of Areas 1 and 2; (b) integrate the Watercourse Impact, Monitoring, Management, and Contingency Plan (WIMMCP) and Swamp Impact, Monitoring, Management, and Contingency Plan (SIMMCP) required under conditions 4 and 6; (c) include monitoring of subsidence effects; (d) include a SCA Assets Protection Plan; (e) include monitoring, management, and contingency plans for all other significant natural features and all significant man-made features which may be impacted by subsidence, including: (f) landscape (including cliffs and steep slopes); (g) groundwater (see condition 13);

- (h) terrestrial flora and fauna and ecology (including all threatened species assessed as being likely to be significantly affected by the development and their habitats);
- (i) Aboriginal and other cultural heritage (see condition 12); and
- (j) electrical, communications and other infrastructure;
- (k) be prepared in consultation with OEH, SCA and DRE;
- (l) be approved prior to the carrying out of any underground mining operations that could cause subsidence in the relevant Area; and
- (m) be implemented to the satisfaction of the Secretary and the DRE.

Schedule 3 - Condition 8

The SMPs prepared under condition 7 for Areas 3B and 3C must:

- (a) include a mine plan for the relevant Area;
- (b) include a detailed subsidence impact assessment, clearly setting out all predicted subsidence effects, subsidence impacts and environmental consequences;
- (c) include a minimum of 2 years of baseline data, collected at appropriate frequency and scale, for all significant natural features;
- (d) identify and assess the significance of all natural features located within 600 m of the edge of secondary extraction;
- (e) distinguish between, clearly describe and adequately quantify all subsidence effects, subsidence impacts and environmental consequences;
- (f) propose limits on subsidence impacts and environmental consequences to be applied within the relevant Area;
- (g) be otherwise prepared in accordance with any guidelines for SMPs developed by the Department and/or DRE;
- (h) be approved prior to the carrying out of any underground mining operations that could cause subsidence in the relevant Area; and
- (i) (i) be implemented to the satisfaction of the Secretary and the DRE.

2.2 Dendrobium Area 3C SMP

The Dendrobium Mine Area 3C SMP Approval was granted by the Secretary on 19 July 2019 for the extraction of Longwall 21, further SMP approval is required for Longwall 20. The performance measures of this Approval (Schedule 3, Condition 6) are listed in **Table 4-1**.

2.3 Leases and Licences

The following licences and permits may be applicable to IMC's operations in Dendrobium Area 3C:

- Dendrobium Mining Lease CCL 768;
- Environmental Protection Licence 3241 which applies to the Dendrobium Mine. A copy of the licence can be accessed at the EPA website via the following link <http://www.environment.nsw.gov.au/poec>;
- Dendrobium Mining Operations Plan FY 2016 to FY 2022;
- Relevant occupational health and safety approvals; and
- Any additional leases, licences or approvals resulting from the Dendrobium Development Consent.

3 MONITORING

3.1 Surface Water Quality

Monitoring undertaken by IMC since 2003 (see Area 3C Watercourse Impact Monitoring, Management and Contingency Plan [WIMMCP] and Swamp Impact Monitoring, Management and Contingency Plan [SIMMCP]) includes water quality monitoring of parameters such as pH, Electrical Conductivity (EC), Dissolved Oxygen (DO), Oxygen Reduction Potential (ORP) and laboratory tested analytes (DOC, Na, K, Ca, Mg, Filt. SO₄, Cl, T. Alk., Total Fe, Mn, Al, Filt. Cu, Ni, Zn, Si).

The key field parameters of DO, pH, EC and ORP for monitoring sites within Dendrobium Area 3C will be analysed to identify any changes in water quality resulting from the mining. Pools and streams away from mining are monitored to allow for a comparison against sites not influenced by mining.

Pools within streams will be measured monthly before and following mining, weekly during active subsidence and in response to any observed impacts.

The water chemistry in Cordeaux Reservoir will be monitored as a basis for comparison to the mine water. The locations of the samples and the testing procedure have been developed in consultation with Dams Safety NSW and WaterNSW.

3.2 Surface Water Level and Flow

Pool water levels in swamps and streams are measured using installed benchmarks in impact sites and reference sites (see Area 3C WIMMCP and SIMMCP). Water level/flow gauges and data loggers are installed at key stream flow monitoring sites; sites will be installed 2 years prior to the extraction of Longwalls 22 and 23. Data has been collected since 2003 and has been compiled within monitoring and field inspection reports, End of Panel (EoP) Reports and Annual Reviews.

Pool water levels are measured monthly before and after mining, on a weekly basis during active subsidence and in response to any identified impacts. Water level measurements will be undertaken relative to benchmarks installed on rocks or other stable features on the edge of the pools.

This data is used to compare differences in pool water level within swamps and streams before and after mining. Sites that will not be mined under are also monitored to provide a comparison of mined and not mined under sites during different climatic conditions.

3.3 Upland Swamp Near-Surface Groundwater and Soil Moisture

Near-surface groundwater piezometers have been installed within and around several swamps and associated watercourses in Area 3 (see Area 3C WIMMCP and SIMMCP). This data is used to compare differences in shallow groundwater levels within swamps, streams and hill-slope aquifers before and after mining. Sites that will not be mined under are also monitored to provide a comparison of sites mined under and not mined under during different climatic conditions.

The piezometric monitoring directed at near-surface groundwater levels is supplemented with monitoring of soil moisture profiles.

The shallow groundwater piezometers and soil moisture probe data is compared with the cumulative monthly rainfall residuals (a key parameter for interpreting temporal soil and shallow groundwater data). Comparisons of the cumulative monthly rainfall residuals against mean monthly water heads in shallow groundwater piezometers and soil moisture profiles will take into account the known distribution of rainfall isohyets (contours of equal annual precipitation) in the local region (these being denser and less smooth closer to the Illawarra Escarpment and much wider proceeding northwest).

3.4 Groundwater

A specialist Groundwater Assessment (Watershed Hydrogeo 2021) is provided in **Attachment B**. An existing groundwater monitoring program is in place for Dendrobium which includes Area 3C. This is detailed in the Area 3C WIMMCP.

Groundwater monitoring is undertaken in:

- Surficial and shallow systems associated with upland swamps and the weathered near-surface bedrock.

- Consolidated rock strata comprising the deeper Hawkesbury Sandstone, the underlying Narrabeen Group and Illawarra Coal Measures.

Pre-mining and post-mining monitoring holes have been installed within Area 3 to investigate and monitor the connected fracture network above the goaf and the upwards migration of the phreatic surface.

Monitoring pore pressures at Dendrobium Mine uses vibrating wire piezometers installed at different depths within the same borehole, thereby creating a vertical array which can be used for 3D mapping and analysis of the pore pressure regime (IEP 2019a). Before and after mining piezometers are routinely installed along the centreline of longwall panels to identify the maximum groundwater effects and the height of depressurisation within the subsidence zone. A number of open standpipe groundwater monitoring holes are proposed to be established across Dendrobium Area 3 to verify the vibrating wire piezometer data. This is in response to feedback on previous SMP applications.

3.5 Pools and Controlling Rockbars

Dendrobium Mine lies in the southern part of the Permo-Triassic Sydney Basin. The geology mainly comprises sedimentary sandstones, shales and claystones, which have been intruded by igneous sills.

The sandstone units vary in thickness from a few metres to as much as 120 m. The major sandstone units are interbedded with other rocks and, though shales and claystones are quite extensive in places, the sandstone predominates.

The major sedimentary units at Dendrobium are, from the top down:

- The Hawkesbury Sandstone;
- The Narrabeen Group; and
- The Eckersley Formation.

Extensive geomorphological mapping has been completed for Dendrobium Area 3, including the location of pools and rockbars (see Area 3C WIMMCP).

The largest watercourse within the Study Area is Wongawilli Creek, which is located to the west of Area 3C and between Areas 3A and 3B. Area 3C is broadly sited on a plateau dissected by a number of relatively deep sub-catchments draining either into Cordeaux River via Wongawilli Creek or Donalds Castle Creek or five un-named 1st and 2nd order streams draining directly to Lake Cordeaux.

3.6 Landscape and Photo Point Monitoring

IMC has conducted ongoing observational and photo point monitoring in the Dendrobium area since 2001 (see Area 3C WIMMCP and SIMMCP).

The IMC Environmental Field Team undertakes a structured monitoring assessment, including:

- Water: location, volume and flow characteristics;
- Significant features: swamps, rockbars, pools and flow channels;
- Vegetation: location, species, height and observed health; and
- Sediment: composition, depth and moisture.

Observations of any surface water and vegetation health changes for prominent species are conducted. Where surface water is present within a swamp or a watercourse the data collected includes water quality parameters (using a monitoring probe) and water levels from installed benchmarks established at the pool. Observations of any surface flow are also made during monitoring.

This data is used to compare differences in site conditions of swamps and watercourses before and after mining. Sites that will not be mined under are also monitored to provide a comparison of sites mined under and sites not mined under during different climatic conditions.

3.7 Slopes and Gradients

Slopes within Area 3C have been mapped and are identified on Drawing 8 in MSEC (2021) (**Attachment C**). Monitoring of landscape features such as cliffs, slopes and rock outcrop will be undertaken in Area 3C (see Area 3C WIMMCP).

Monitoring of these sites allows for the measurement of any changes to the surface including soil cracking, erosion and/or sedimentation impacts resulting from subsidence.

The inspection and monitoring include:

- Monitoring sites based on an assessment of risk of impact where pre-mining measurements have been undertaken and reported;
- Areas of steep slopes that are en route or near monitoring sites;
- Rock outcrops that are en route or near monitoring sites;
- Any other sites where impacts have been previously observed that warrant follow-up inspection (i.e. rockfalls and soil cracking); and
- The general areas above the current mining location at the time of inspection.

Steep slopes are monitored throughout the mining period and until any necessary rehabilitation is complete. Slopes and gradients are monitored prior to mining as well as monthly during active subsidence. The monitoring is undertaken at six monthly intervals for two years following completion of mining.

3.8 Erodibility

Most of the surface of Area 3C has been identified as highly weathered Hawkesbury Sandstone outcrops and sandstone derived-soils. This soil landscape has been identified to have high to extreme erosion susceptibilities to concentrated flows. This results in potential flow on effects to slope stability and erosion from any cracking resulting from subsidence. Monitoring of slopes is undertaken in Area 3C to identify any erosion of the surface (see Area 3C WIMMCP and SIMMCP).

An extensive survey network has been implemented which includes relative and absolute horizontal and vertical movements. Additional sites will be added to the monitoring program prior to subsidence movements impacting the sites.

Due to terrain, vegetation and access restrictions, the primary method of identifying any erosion over Area 3C will be Airborne Laser Scanning (ALS). This technique has proven to be successful in generating topographic models of subsidence over entire longwall and mining domains and will also provide identification of any erosion. The maximum areas, length and depth of erosion will be measured by standard survey methods.

Base surveys using ALS will be carried out prior to the extraction of the proposed longwall. Subsidence landscape models using the same methodology after the completion of subsidence at each longwall will provide a new (subsided) baseline surface dataset. For a period of up to ten years after mining repeat ALS datasets and surface modelling will be completed to identify new or increases in existing erosion. Erosion will be quantified by comparison of the immediate post subsidence landscape model with the long-term monitoring model. Targeted ALS scans will be completed where erosion is observed via the observational and landscape monitoring programs or after significant events such as bushfire and flooding.

Inspections of the mining area will be undertaken at regular intervals, during active subsidence. In addition to erosion, these observations aim to identify any surface cracking, surface water loss, soil moisture changes, vegetation condition changes, and slope and gradient changes.

3.9 Flora, Fauna and Ecosystem Function

Terrestrial flora and vegetation communities in the Study Area are described in the Longwalls 22 and 23 Terrestrial Ecology Assessment (**Attachment F**) (Niche 2021b). Aquatic flora and fauna in the Study Area are described in the Aquatic Flora and Fauna Review (**Attachment A**) (Cardno 2021).

A monitoring program designed to detect potential impacts to ecology and ecosystem function from subsidence will be implemented for Area 3C (see Area 3C WIMMCP and SIMMCP). The monitoring program is based on a BACI design with sampling undertaken at impact and control locations prior to the commencement of extraction, during extraction and after extraction.

Sufficient baseline data will be collected for Area 3C to enable the detection of changes to ecology associated with mining related impacts.

The study focuses on flora, fauna and ecosystem function of swamps and watercourses and is measured via the following attributes:

- The size of the swamps and the groundwater dependent communities contributing to the swamps;

- RCE including a photographic record of each stream assessment site;
- Water quality, including pH, DO, ORP, temperature, turbidity and EC;
- Aquatic macrophytes, including presence, species composition and total area of coverage;
- Aquatic macroinvertebrates using the Australian River Assessment System (AUSRIVAS) sampling protocol and artificial aquatic macroinvertebrate collectors;
- Fish presence and numbers using backpack electro fisher and/or baited traps; and
- Presence of threatened species (including Macquarie Perch, Littlejohn's Tree Frog, Giant Burrowing Frog, Adams Emerald Dragonfly, Giant Dragonfly and Sydney Hawk Dragonfly).

Observation data will also be collected as part of the monitoring program. Locations where significant changes have been observed (e.g. drainage of pools) will be mapped, documented and reported.

3.10 Cultural Heritage

There are three Aboriginal heritage sites that have been identified within the Study Area based on the 35° angle of draw and predicted 20 mm subsidence contour (**Appendix 2**). There are eight additional sites that are located within the Study Area based on the 600 m boundary.

The Aboriginal heritage sites within the Study Area comprise six Shelters with Art, one Shelter with Deposit, two Shelters with Art and Deposits, one Stone Arrangement and one Isolated Artefact. Site 52-2-2219 is located directly above the proposed Longwall 22. The remaining sites are located outside the proposed mining area at distances ranging between 230 m and 610 m.

Site 52-2-2219 is located directly above the proposed Longwall 22. The rock shelter has formed by blockfall and it is approximately 10.8 m long, 3 m deep and 2.3 m high (NPWS, 2002). The extraction of Longwall 22 is likely to result in fracturing of the exposed bedrock along the ridgeline and, where the rock is marginally stable, it could then result in rockfalls or instabilities. The fracturing and rockfalls could therefore adversely impact this rock shelter (MSEC 2021).

Fracturing resulting in spalling or rockfalls could occur at Site 52-2-2219. The potential for adverse impacts at this site has been assessed as unlikely (i.e. less than 10 %). Site 52-2-1634 is located 335 m north-west of the proposed Longwall 23. The rock shelter is located under a waterfall on a side tributary, formed by chemical weathering and exfoliation, and it is approximately 18 m long, 8.2 m deep and 4 m high (NPWS, 1991).

Fracturing has been observed in the Southern Coalfield at distances up to approximately 400 m outside the mining area. It is possible, but unlikely, that fracturing could occur along the tributary near Site 52-2-1634. The potential for adverse impacts at this site has been assessed as rare (i.e. less than 5 %) (MSEC 2021).

The remaining Aboriginal heritage sites are predicted to experience less than 20 mm vertical subsidence and are not expected to experience valley-related effects. Adverse impacts on these sites therefore are not anticipated due to the mining of Longwall 22 and Longwall 23.

Further discussions on the potential impacts on the Aboriginal heritage sites within the Study Area are provided in the report by Niche (2021a).

At the time of writing, IMC is developing an updated Area 3C Aboriginal Cultural Heritage Management Plan to manage the sites within the Study Area in consultation with the Registered Aboriginal Parties. Once finalised, this document will be sent to Heritage NSW for comment.

3.11 Built Features

3.11.1 Unsealed Roads and Tracks

Unsealed roads and tracks are located across the Study Area. It is likely that cracking and heaving of the unsealed road surfaces would occur where they are located directly above the proposed longwall. Routine monitoring will be conducted along roads and tracks, during periods of active subsidence, to identify any potential impacts. Based on experience in Areas 1, 2, 3A and 3B, it is expected that these features can be maintained in safe and serviceable conditions using normal road maintenance techniques. Roads will be monitored as part of the landscape management plan.

3.11.2 330 kV Transmission Line

The Avon-to-MacArthur 330 kV transmission line (Line 17) owned by TransGrid crosses directly above the proposed Longwalls 22 and 23. This transmission line also crosses directly above the completed Longwalls 6 to 8 in Area 3A and is located adjacent to and immediately east of the approved Longwall 21 in Area 3C.

With the implementation of the appropriate monitoring and management strategies, it is expected that the 330 kV transmission line could be maintained in a safe and serviceable condition throughout the mining period, similar to that during the extraction of the completed longwalls in Area 3A. IMC will consult with TransGrid to manage this infrastructure during mining.

3.11.3 33 kV Powerline

A 33 kV powerline owned by Endeavour Energy crosses directly above the proposed Longwalls 22 and 23. This powerline is also located above the existing Longwall 6 and Longwall 7 in Area 3A. The 33 kV powerline comprises aerial copper conductors supported by metal and timber poles.

With the implementation of the appropriate monitoring and management strategies, it is expected that the 33 kV transmission line could be maintained in a safe and serviceable condition throughout the mining period, similar to that during the extraction of the completed longwalls in Area 3A. IMC will consult with Endeavour Energy to manage this infrastructure during mining.

3.11.4 Dams and Reservoirs

The commencing (i.e. western) ends of Longwalls 22 and 23 are located within the Dams Safety NSW Notification Area for Lake Cordeaux. The longwalls is located at a minimum distance of 300 m from the Full Supply Level (FSL) of the reservoir. The Cordeaux Dam Wall is located at the northern end of the reservoir and it is at a distance of approximately 2.8 km from Longwall 23.

The FSL of the Cordeaux Reservoir is located outside the 35° angle of draw for the proposed longwalls. At this distance, the reservoir is predicted to experience less than 20 mm vertical subsidence. While the reservoir could experience very low levels of vertical subsidence, it is not expected to experience measurable conventional tilts, curvatures or strains (MSEC 2021).

Whilst the predicted valley related effects are small, it is possible that minor cracking could occur in the bedrock, as has been observed in the Southern Coalfield up to 400 m from previously extracted longwalls. It is possible that fracturing could occur in the bedrock beneath the Cordeaux Reservoir where it is located within approximately 400 m of the proposed longwalls. However, it is unlikely that fracturing would be visible in the bed of the reservoir due to the alluvial deposits (MSEC 2021).

The Avon Dam wall is located more than 8 km west of the proposed longwalls. At this distance, the dam wall is unlikely to experience measurable movements and, therefore, it is not expected to experience adverse impacts.

The previous mining has not resulted in adverse impacts on these structures. Further details on built features within the study area is located in **Attachment C** (MSEC 2021).

3.12 Reporting

EoP Reports are prepared in accordance with Schedule 3, Condition 9 of the Dendrobium Development Consent. Results from the monitoring program are included in the EoP Report and in the Annual Review. These reports detail the outcomes of monitoring undertaken; provide results of inspections and determine whether performance indicators have been exceeded.

Monitoring results will be reviewed monthly by the IMC Subsidence Management Committee. However, if the findings of monitoring are deemed to warrant an immediate response, the Principal Approvals will initiate that response.

Monitoring results are included in the Annual Review reporting requirement under Schedule 8, Condition 5 in accordance with the Dendrobium Development Consent and are made publicly available in accordance with Schedule 8, Condition 11.

4 PERFORMANCE MEASURES AND INDICATORS

Performance measures and indicators have been derived from the modified Dendrobium Development Consent and the Area 3C SMP Approval. These performance measures are presented in **Table 4-1** and will be applied to the Dendrobium Area 3C mining area.

Table 4-1 Subsidence Impact Performance Measures

Dendrobium Development Consent	
Condition 2 – Schedule 3	
<ul style="list-style-type: none"> The Applicant must ensure that underground mining operations do not cause subsidence impacts at Sandy Creek and Wongawilli Creek other than “minor impacts” (such as minor fracturing, gas release, iron staining and minor impacts on water flows, water levels and water quality) to the satisfaction of the Secretary. 	
Condition 3 – Schedule 3	
<ul style="list-style-type: none"> Operations will not result in reduction (other than negligible reduction) in the quality or quantity of surface water or groundwater inflows to Lake Cordeaux or Lake Avon or surface water inflow to the Cordeaux River at its confluence with Wongawilli Creek. 	
Area 3C SMP Approval	
Swamps	
Swamps Den 09, Den 144 and Den 145	Minor environmental consequences including: <ul style="list-style-type: none"> negligible erosion of the surface of the swamps; minor changes to the hydrology of the swamp; minor changes in the size of the swamps; minor changes in the ecosystem functionality of the swamp; maintenance or restoration of the structural integrity of the bedrock base of any significant permanent pool or controlling rockbar within the swamp.
Watercourses	
Wongawilli Creek	Minor environmental consequences including: <ul style="list-style-type: none"> minor fracturing, gas release and iron staining; and minor impacts on water flows, water levels and water quality.

A detailed list of performance measures and triggers is included in the Trigger Action Response Plans (TARP) (see attached Area 3C WIMMCP and SIMMCP).

4.1 Impact Mechanisms

Subsidence is an unavoidable consequence of longwall mining and includes vertical and horizontal movement of the land surface. Subsidence effects include surface and sub-surface cracking, buckling, dilation and tilting. These effects can result in changes to the hydrology of watercourses.

Changes to watercourse hydrology and water quality can result in environmental consequences. The likelihood and timing of these consequences relate to the size and duration of the effect. The potential consequences of mining on groundwater and surface water in the Special Areas are (IEP 2019a):

- Groundwater depressurisation

- The creation of an excavation below the water table can affect groundwater in a number of basic ways. In all cases, because the fluid pressure in an excavation is much lower than that of the fluid that originally occupied the space, a flow system is established with the excavation acting as a sink into which surrounding groundwater flows. The rate of flow and observed extent of depressurisation depend on the hydrogeological properties of the rock mass. If the excavated area is sufficiently large, the spatial extent and rate of flow into the sink can be enhanced by the formation of fractures.
- Surface water diversions
 - Diversions into a shallow, localised fracture network, where loss of flow from a surface water is likely to return to the system at some point downstream, which based on observations of the SCI (2008) may vary from 20 m for specific rockbars to more than 200 m.
- Surface water permanent losses
 - Diversions into deeper, dilated shear surfaces on bedding planes, where these form a conduit for lateral water flow, which may or may not report to the same catchment (i.e. it may become a permanent loss).
- Groundwater depressurisation
 - Groundwater within the Hawkesbury Sandstone and Narrabeen Group as well as the Permian coal measures is recharged from rainfall and water bodies where the lithologies occur at outcrop, as well as potential downward leakage from overlying strata (Hydrosimulations 2018).
- Water quality
 - Water quality within watercourses is affected by numerous factors including runoff from swamps and interactions between bedrock and water, with fracturing of bedrock due to mining causing local water quality impacts.

The environmental consequences which could relate to changes in hydrology and water quality include:

- Species composition change and/or changes in vegetation communities.
- Loss of aquatic ecology and/or changes in aquatic habitat resulting from a reduction of surface water quality and/or flows and standing pools.
- Water-borne inputs to Lake Avon and Cordeaux River such as erosive export of fine sands and clays and/or ferruginous precipitates.
- Reduced inflows into Lake Avon and Cordeaux River.

An overview of the potential impacts and consequences of mining on swamps, surface flows and storages is presented in **Table 4-2**.

Table 4-2 Summary of subsidence effects, impacts and consequences for surface flows, storages and swamp hydrology (IEP 2019b)

Subsidence effects	Impacts	Consequences
<ul style="list-style-type: none"> • Cracking (tensile and compressive) or shear movement of joints and bedding planes • Fracturing of sandstone blocks • Buckling and localised upsidence in the stream bed below the swamp • Tilting of bedrock 	<ul style="list-style-type: none"> • Cracking of rock bars • Lowered water tables and soil moisture • Potential erosion and scouring • Altered water chemistry e.g. enhanced release of iron • Change to the size of swamps 	<ul style="list-style-type: none"> • Loss of surface flow and storage through leakage • Loss of baseflow generation including from swamps • Vulnerability of swamps to fire and further erosion and reduction in baseflow generation capacity • Increased loads of contaminants to water storages

The impact mechanisms and environmental consequences relevant to the performance measures are detailed in the WIMMCP and SIMMCP.

4.2 Risk Assessment

The IEP (2019a) recommended that any SMP application consider *the potential implications for water quantity of faulting, basal shear planes and lineaments and that a Risk Assessment be included in applications to extract coal within Catchment Special Areas*. The Longwalls 22 and 23 Risk Assessment was held 17 June 2021 and was attended by both South32 employees and consultants from a range of disciplines. The risk assessment has been independently peer reviewed by Professor Bruce Hebblewhite. As per the IEP recommendations, the Longwalls 22 and 23 Risk Assessment (Axys 2021) is included as **Attachment D**.

5 MANAGEMENT AND CONTINGENCY PLAN

This section describes the potential impacts of mine subsidence in Area 3C, together with a summary of the avoidance, minimising, mitigation and remediation measures proposed.

5.1 Objectives

The aims and objectives of the Plan include:

- Avoiding and minimising impacts to significant environmental values where possible;
- Implementing TARPs to identify, assess and responding to impacts;
- Carrying out mitigation and remediation works in a manner that protects to the greatest practicable extent the environmental values of the area;
- Achieving the Performance Measures outlined in the Development Consent and SMP Approval, to the satisfaction of the Secretary; and
- Monitoring and reporting effectiveness of the Plan.

To achieve these aims, monitoring, management, mitigation and remediation has been incorporated into the mining activity proposed by IMC.

5.2 Trigger Action Response Plan

The TARPs relate to identifying, assessing and responding to potential impacts to watercourses (including impacts greater than predicted) from subsidence in Dendrobium Area 3C. These TARPs have been prepared using knowledge gained from previous mining in other areas of Dendrobium. The TARPs for Area 3C are included in the appendices of the SIMMCP and WIMMCP.

The TARPs represent reporting and/or other actions to be taken upon reaching each defined trigger level. A Corrective Management Action (CMA) is developed in consultation with stakeholders in order to manage an observed impact in accordance with relevant approvals. The SIMMCP and WIMMCP provide a basis for the design and implementation of any mitigation and remediation.

Monitoring of environmental aspects provides key data when determining any requirement for mitigation or rehabilitation. The triggers are based on comparison of baseline and impact monitoring results. Specific triggers will continue to be reviewed and developed in consultation with key stakeholders as the impact monitoring phase matures. Where required the triggers will be reviewed and changes proposed in impact assessment reports provided to government agencies or in EoP Reports. Any changes to the triggers would require approval of DPIE.

Level 3 TARPs result in further investigations and reporting by appropriately qualified people. Impact assessment reports will include:

Study scope and objectives;

- Consideration of relevant aspect from this Plan;
- Analysis of trends and assessment of any impacts compared to prediction;
- Root cause analysis of any change or impact;
- Assessment of the need for contingent measures and management options;
- Any recommended changes to this Plan; and
- Appropriate consultation.

The Level 3 TARPs may require the development of site-specific CMAs which include:

- A description of the impact to be managed;
- Results of specific investigations;
- Aims and objectives for any corrective actions;
- Specific actions required to mitigate/manage and timeframes for implementation;
- Roles and responsibilities;
- Gaining appropriate approvals from landholders and government agencies; and

- Reporting, consultation and communication.

5.3 Avoiding and Minimising

Mine layouts for Dendrobium Area 3C have been developed using IMC's Integrated Mine Planning Process (IMPP). This process considers mining and surface impacts when designing mine layouts.

IMC has assessed mining layout options for Dendrobium Area 3C against the following criteria:

- Extent, duration and nature of any community, social and environmental impacts;
- Coal customer requirements;
- Roadway development and longwall continuity;
- Mine services such as ventilation;
- Recovery of the resource for the business and the State; and
- Gas drainage, geological and geotechnical issues.

Several layout alternatives for Area 3C were assessed by IMC using a multi-disciplinary team including environment, community, mining, geological and exploration expertise. These included variations in the number of longwalls and orientations, lengths, and setbacks of the longwalls from key surface features. These options were reviewed, analysed and modified until an optimised longwall layout in Area 3C was achieved.

Area 3C is part of the overall mining schedule for Dendrobium Mine and has been designed to flow on from Areas 1, 2, 3A and 3B to provide a continuous mining operation. There are a number of surface and subsurface constraints within the vicinity of Area 3C including major surface water features such as Lake Cordeaux and Wongawilli Creek; and a number of geological constraints such as dykes and faults. The process of developing the layout for Area 3C has considered predicted impacts on major natural features and aimed to minimise these impacts within geological and other mining constraints.

The layouts at Dendrobium Mine have been modified to reduce the potential for impacts to surface features. Changes to a mine layout have significant flow-on impacts to mine planning and scheduling as well as economic viability. These issues need to be taken into account when optimising mine layouts. The process adopted in designing the Dendrobium Area 3C mine layout incorporated the hierarchy of avoid/minimise/mitigate as requested by the DPIE and BCD during the consultation process. Mine plan changes result in significant business and economic impact, including:

- Reduction in coal extracted;
- Reduction in royalties to the State;
- Additional costs to the business;
- Risks to longwall production due to additional roadway development requirements; and
- Constraints on blending which can disrupt the supply of coal to meet customer requirements.

Restricting mine layout flexibility can also have the following consequences:

- Additional energy used to ventilate the mine;
- Increased safety risks such as risk of frictional ignition on the longwall due to less than optimal ventilation;
- Increased power usage, reduced fan lifespan and a requirement to install booster fans;
- Requirement for heavy secondary support density;
- Potential for horizontal stress and vertical abutment concentrations;
- The risk of strata control associated with increased roadway development and longwall install and take-off faces;
- Exposes the workforce to higher risk environments more frequently;
- Results in a large number of equipment movements and interaction with workers and infrastructure; and
- Requires specialised equipment and skilled personnel with limited availability.

Longwalls 22 and 23 have been setback 345 and 320 m respectively from Wongawilli Creek and minimum of 300 m from Lake Cordeaux. This reduction in extraction also reduces subsidence movements at surface features in proximity to Wongawilli Creek and Lake Cordeaux, including the tributaries WC26, WC24, LC6, LC7 and CR36, and Swamps 141, 152, 154, 155 and 156.

The mining layout of Longwalls 22 and 23 is designed to avoid Lake Cordeaux, Wongawilli Creek and geological constraints.

Wongawilli Creek is situated on the western side of the longwalls in Area 3C. The thalweg (i.e. base or centreline) of the creek is 320 m from the finishing (i.e. western) end of Longwall 23, at its closest point. The minimum distances between the thalweg of the creek and the completed longwalls are 110 m for Longwall 6 in Area 3A and 290 m for Longwall 9 in Area 3B.

5.4 Mitigation and Rehabilitation

If the performance measures in the Development Consent are not met, then following consultation with BCD, Mining, Exploration and Geosciences (MEG), the Resources Regulator and WaterNSW, the Secretary of DPIE may issue a direction in writing to undertake actions or measures to mitigate or remediate subsidence impacts and/or associated environmental consequences. The direction must be implemented in accordance with its terms and requirements, in consultation with the Secretary and affected agencies.

As indicated in Schedule 2, Conditions 1 and 14 of the Development Consent and Condition 7 of the Area 3C SMP Approval, the mitigation and rehabilitation described in this Plan is required for the development and an integral component of the proposed mining activity. To the extent these activities are required for the development approved under the Dendrobium Mine Development Consent no other licence under the then *Threatened Species Conservation Act 1995* (TSC Act) (repealed by the *Biodiversity Conservation Act 2016*) is required in respect of those activities.

At the time of grant of the Dendrobium Development Consent there was no requirement for concurrence in respect of threatened species or ecological communities. The requirement for concurrence was, at that time, governed by section 79B of the EPA Act. At the time of grant of the Dendrobium Consent there was a requirement for consultation with the Minister administering the then TSC Act and this consultation was undertaken.

5.4.1 Sealing of Rock Fractures

Where the bedrock base of any significant permanent pool or controlling rockbar within Wongawilli Creek is impacted from subsidence and where there is limited ability for these fractures to seal naturally they will be sealed with an appropriate and approved grout. Grouting will be focused where fractures result in diversion of flow from pools or through the controlling rockbar. Significant success has been achieved in the remediation of the Georges River where four West Cliff longwalls directly mined under the river and pool water level loss was observed (BHP Billiton Illawarra Coal, 2006).

Such operations do have the potential to result in additional environmental impacts and are carefully planned to avoid contamination. Mixing areas will be restricted to cleared seismic lines or other open areas wherever possible. Bunds are used to contain any local spillage at mixing points. Temporary cofferdams can be built downstream of the grouting operations to collect any spillage or excess grouting materials for disposal off-site. The selection of grouting materials is based on demonstrated effectiveness and ensuring that there is no significant impact to water quality or ecology.

5.4.2 Injection Grouting

Injection grouting involves the delivery of grout through holes drilled into the bedrock targeted for rehabilitation. A variety of grouts and filler materials can be injected to fill the voids in the fractured strata intercepted by the drill holes. The intention of this grouting is to achieve a low permeability 'layer' below any affected pool as well as the full depth of any controlling rockbar.

Where alluvial materials overlie sandstone, grouts may be injected through grout rods to seal voids in or under the soil profile. This technique was successfully used at Pool 16 in the Georges River to rehabilitate surface flow bypass to Pool 17. In this case 1-2 m of loose sediment was grouted through using purpose built grouting pipes.

Grouting holes are drilled in a pattern, usually commencing at a grid spacing of 1 m by 1 m to 2 m by 2 m. The most efficient way to drill the holes in consideration of potential environmental impacts is by using handheld drills. The drills are powered by compressed air which is distributed to the work area from a compressor. The necessary

equipment will be sited on cleared seismic lines or other clear areas wherever possible with hoses run out to target areas.

Grout is delivered from a small tank into the ground via mechanical packers installed at the surface. All equipment can be transported with vehicles capable of travelling on tracks similar to seismic lines. If necessary, equipment or materials can be flown to nearby tracks or open spaces by helicopter. Helicopter staging has previously occurred from Cordeaux Mine where there is appropriate logistical support.

Grouting volumes and locations are recorded and high volume areas identified. Once the grout take in the area is reduced and the material has set, the grouted section of the pool is isolated and tested with local or imported clean water. The rate at which the water drains is measured and compared to pre-grouting results. The grouting process is iterative; relying on monitoring of grout injection quantities, grout backpressures and measurements of water holding capacity. In the Georges River pools were sealed with two to three grout passes.

If flow diversion through a large rockbar occurs it may be more appropriate to implement alternative grouting techniques such as a deeper grout curtain which can be delivered via traditional or directional drilling technologies. Grouting should preferentially be undertaken at the completion of subsidence movements in the area to reduce the risk of the area being re-impacted. **Figure 5-1** shows grouting operations in progress within the Georges River.



(a) Drilling into the bedrock



(b) Grout pump station setup



(c) Injecting grout into bedrock via a specially designed packer system

Figure 5-1 Rockbar Grouting in the Georges River

5.4.3 Erosion Control

Erosion can occur along preferred flow paths where subsidence induced tilts increase a catchment area. To arrest this type of erosion, 'coir log dams' are installed at knick points in the channelised flow paths or at the inception of tunnel/void spaces (

Figure 5-2).



Figure 5-2 Square Coir Logs for Knick Point Control

As the coir log dams silt up they are regularly added to by the placement of additional layers of logs until the pooled water behind the 'dams' is at or above the level of the bank of the eroded channel. The coir logs are held in place by 50 mm x 50 mm wooden stakes and bound together with wire (

Figure 5-3). The coir log dam slows the flows in the eroding drainage line such that the drainage line will silt up.



Figure 5-3 Installation of Square Coir Logs

The most important aspect of these coir dams is the positioning of the first layer of coir logs. A trench is cut into the soil so the first layer sits on the underlying substrate or so the top of the first coir log is at ground level (

Figure 5-4).



Figure 5-4 Trenching and Positioning of the First Layer of Coir Logs and Construction of a Small Dam in a Channel

The coir log dams are constructed at intervals down the eroding flow line, the intervals being calculated on the depth of erosion and predicted peak flows and added to until the pooled water behind the 'dams' is at or above the level of the bank of the erosion. Where increased filtering of flows is required the coir logs are wrapped in fibre matting (

Figure 5-5).



Figure 5-5 Small Coir Log Dams with Fibre Matting

5.4.4 Surface Treatments and Water Spreading

Where cracking develops in significant areas and natural infilling is not occurring, the cracks may require forking over and compacting to prevent erosion. Larger cracks may require more work to repair them, for example, mulch or other protection to prevent the development of erosion channels. Surface protection will remain in place until revegetation covers the disturbed area. In some cases, if the cracks are wider they may require gravel or sand filling up to surface level and revegetation using brush matting. Maintenance of moisture in rehabilitation areas can be enhanced by additional water spreading techniques, involving long lengths of coir logs and hessian 'sausages' linked together across the contour such that water flow builds up behind them and slowly seeps through the water spreaders (

Figure 5-6).

Where sheet and rill erosion forms, these processes can reduce vegetation on the surface and/or be a precursor to the formation of gully and stream channel erosion. Treatment of these areas can prevent the formation of channels and maintain swamp moisture. The treatment proposed includes water spreading techniques, involving long lengths of coir logs and hessian 'sausages' linked together across the contour such that water flow builds up behind them and slowly seeps through the water spreaders.



Figure 5-6 Round Coir Logs Installed to Spread Water

Erosion control and water spreading involves soft-engineering materials that are biodegradable and become integrated into the soil profile. This approach is ecologically sustainable in that all the materials used can breakdown and become part of the organic component of the soil.

This also removes the requirement for any post-rehabilitation removal of structures or materials. However, rehabilitation measures have the potential to cause impact through the materials used and the disturbance associated with access. Relevant approvals will be obtained to ensure the protection of the environment as works are implemented.

5.4.5 Gas Release

A typical driver of gas release at the surface is pressure changes, dilation and/or fracturing of the rock mass and associated release to the surface, with or without groundwater flows. Grouting techniques discussed above can reduce these associated gas flows at specific sites. In all identified circumstances in the Southern Coalfield the gas releases have diminished over time. Typically this time is a number of months but it can be a number of years. Long running gas releases significantly reduce in quantity over time. Where vegetation is impacted by gas releases the areas affected will be revegetated once monitoring determines the gas releases have ceased or reduced to an extent that vegetation is no longer affected.

Very few gas releases have been observed within the Dendrobium mining area.

5.4.6 Water Quality

Ecoengineers (2012) outline mitigation measures that would be considered if unpredicted water quality impacts were detected. Any works on WaterNSW land requires approval from WaterNSW to access the land and there is a requirement for compliance with the Access Agreement between WaterNSW and IMC. These requirements ensure strict limits are placed on any impacts associated with undertaking rehabilitation works on WaterNSW land.

5.4.7 Alternative Remediation Approaches

IMC has successfully implemented a subsidence rehabilitation program in the Georges River where there were impacts associated with mining directly under streams. This rehabilitation focused on grouting of mining induced fractures and strata dilation to reinstate the structural integrity and water holding capacity of the bedrock. Metropolitan Colliery is currently undertaking work aimed at rehabilitating areas impacted by subsidence using Polyurethane Resin (PUR) and other grouting materials. IMC is consulting with Metropolitan Colliery in relation to these new and emerging technologies. Additionally, the findings and outcomes of the WC21 rehabilitation trials in Area 3B will be incorporated into remediation activities. Should rehabilitation be necessary in Dendrobium Area 3C, the best option available at the time of the rehabilitation work will be identified and with appropriate approval, implemented by IMC.

Cracking due to subsidence will tend to seal as the natural processes of erosion and deposition act on them. The characteristics of the surface materials and the prevailing erosion and depositional processes of a specific area will determine the rate of infill of cracks and sealing of any fracture network.

5.4.8 Monitoring Remediation Success

Baseline studies have been completed within the Study Area in order to record biophysical characteristics of the mining area. Monitoring is conducted in the area potentially affected by subsidence from the Area 3C extraction as well as areas away from mining to act as control sites.

The monitoring program would remain in place prior to, during and following the implementation of any remediation measures in Area 3C. The monitoring program is based on the BACI design with sampling undertaken at impact and control locations prior to the commencement of remediation, during remediation and after the completion of the remediation actions. The monitoring locations/points for watercourses within Dendrobium Area 3C will be reviewed as required and can be modified (with agreement) accordingly.

Statistical analyses between control, impact and remediation sites will be used to determine whether there are statistically significant differences between these sites. This analysis will assist in determining the success of any remediation or natural reduction of mining impacts over time.

Observation data will be collected as part of the monitoring program and be used to provide contextual information to the above assessment approach. Monitoring data and observations will be mapped, documented and reported.

5.5 Biodiversity Offset Strategy

Where impacts are greater than predicted or not within approved levels, compensatory measures will be considered. Any compensatory measure will consider the level of impact requiring compensation, the compensatory measures available and the practicality and cost of implementing the measure.

Subject to Condition 14 of Schedule 3 of the Development Consent:

- The Applicant shall provide suitable offsets for loss of water quality or loss of water flows to WaterNSW storages, clearing and other ground disturbance (including cliff falls) caused by its mining operations and/or surface activities within the mining area, unless otherwise addressed by the conditions of this consent, to the satisfaction of the Secretary. These offsets must:
 - (a) be submitted to the Secretary for approval by 30 April 2009;
 - (b) be prepared in consultation with WaterNSW;
 - (c) provide measures that result in a beneficial effect on water quality, water quantity, aquatic ecosystems and/or ecological integrity of WaterNSW's Special Areas or water catchments.

IMC transferred 33 ha of land adjacent to the Cataract River to WaterNSW to meet the above condition.

A biodiversity offset strategy has been developed in consultation with BCD and WaterNSW for the approval of the Secretary of DPIE. The Secretary DPIE approved the Strategic Biodiversity Offset in accordance with Condition 15 of Schedule 2 of the Development Consent for the Dendrobium Coal Mine 16 December 2016. The Secretary also expressed satisfaction that the Strategy fulfils the requirements of the SMP for Areas 3A, 3B and 3C.

5.6 Research

To assist in further understanding the impacts of subsidence and rehabilitation of swamps, IMC will undertake research to the satisfaction of the Secretary. The research will be directed to improving the prediction, assessment, remediation and/or avoidance of subsidence impacts and environmental consequences to swamps. The Swamp Rehabilitation Research Program (SRRP) is currently being undertaken across Dendrobium Area 3.

5.7 Contingency and Response Plan

In the event the TARP parameters are considered to have been exceeded, or are likely to be exceeded, IMC will implement a contingency plan to manage any unpredicted impacts and their consequences.

This would involve the following actions:

- Identify and record the event.
- Notify government agencies and specialists as soon as practicable.

- Conduct site visits with stakeholders as required.
- Contract specialists to investigate and report on changes identified.
- Provide incident report to relevant agencies.
- Review the monitoring frequency.
- Updates from specialists on investigation process.
- Inform relevant government agencies of investigation results.
- Develop site CMA in consultation with key stakeholders and seek approvals.
- Implement CMA as agreed with stakeholders following approvals.
- Conduct initial follow up monitoring and reporting following CMA completion.
- Provide any environmental offset required by the Consent.
- Review the WIMMCP and/or SIMMCP in consultation with key government agencies and seek approval for any modifications.
- Report in EoP Report and Annual Review.

A site-specific rehabilitation action plan detailing the location and specific works to be implemented will be prepared following the identification of mining induced degradation that exceeds the trigger levels specified in the TARPs.

The site-specific rehabilitation action plan will be developed in consultation with relevant stakeholders. Authority to access the land to conduct works and the implementation of environmental controls will be approved by WaterNSW.

The WIMMCP and SIMMCP describes the avoidance, mitigation and contingency measures proposed to manage impacts where predicted impacts are exceeded.

6 INCIDENTS, COMPLAINTS, EXCEEDANCES AND NON-CONFORMANCES

6.1 Incidents

IMC will notify DPIE and any other relevant agencies of any incident associated with Area 3C operations as soon as practicable after IMC becomes aware of the incident. IMC will provide DPIE and any relevant agencies with a report on the incident within seven days of confirmation of any event.

6.2 Complaints Handling

IMC will:

- Provide a readily accessible contact point through a 24-hour toll-free Community Call Line (1800 102 210). The number will be displayed prominently on IMC sites in a position visible by the public as well as on publications provided to the local community.
- Respond to complaints in accordance with the IMC Community Complaints and Enquiry Procedure.
- Maintain good communication lines between the community and IMC.
- Keep a register of any complaints, including the details of the complaint with information such as:
 - Time and date.
 - Person receiving the complaint.
 - Complainant's name and phone number.
 - Description of the complaint.
 - Area where complaint relates to.
 - Details of any response where appropriate.
 - Details of any corrective actions.

6.3 Non-Conformance Protocol

The requirement to comply with all approvals, plans and procedures is the responsibility of all personnel (staff and contractors) employed on or in association with Dendrobium Mine operations. Regular inspections, internal audits and initiation of any remediation/rectification work in relation to this Plan will be undertaken by the Principal Approvals.

Non-conformances, corrective actions and preventative actions are managed in accordance with the following process:

- Identification and recording of non-conformance and/or non-compliance;
- Evaluation of the non-conformance and/or non-compliance to determine specific corrective and preventative actions;
- Corrective and preventative actions to be assigned to the responsible person;
- Management review of corrective actions to ensure the status and effectiveness of the actions;
- An Annual Review will be undertaken to assess IMC's compliance with all conditions of the Dendrobium Development Consent, Mining Leases and other approvals and licenses.

An independent environmental audit will be undertaken in accordance with Schedule 8, Condition 6 to review the adequacy of strategies, plans or programs under these approvals and if appropriate, recommend actions to improve environmental performance. The independent environmental audit will be undertaken by a suitably qualified, experienced and independent team of experts whose appointment has been endorsed by the Secretary of DPIE.

7 PLAN ADMINISTRATION

This SMP will be administered in accordance with the requirements of the Dendrobium Environmental Management System (EMS) and the Dendrobium Development Consent. A summary of the administrative requirements is provided below.

7.1 Roles and Responsibilities

Statutory obligations applicable to Dendrobium operations are identified and managed via an online compliance management system. The online system can be accessed by the responsible IMC managers from the link below.

<https://ilwarracoal.tod.net.au/login>.

The overall responsibility for the implementation of the SMP resides with the Approvals Manager who shall be the SMP's authorising officer.

Responsibilities for environmental management in Dendrobium Area 3 and the implementation of the SMP include:

Manager Approvals

- Ensure that the requisite personnel and equipment are provided to enable this SMP to be implemented effectively.
- Authorise the SMP.

Principal Approvals

- Develop the SMP and any amendments thereto.
- To document any approved changes to the SMP.
- Provide regular updates to IMC on the results of the SMP.
- Arrange information forums for key stakeholders as required.
- Prepare any report and maintain records required by the SMP.
- Organise and participate in assessment meetings called to review mining impacts.
- Respond to any queries or complaints made by members of the public in relation to aspects of the SMP.
- Organise audits and reviews of the SMP.
- Address any identified non-conformances, assess improvement ideas and implement if appropriate.
- Arrange implementation of any agreed actions, responses or remedial measures.
- Ensure surveys required by this SMP are conducted and record details of instances where circumstances prevent these from taking place.

Coordinator Environment

- Instruct suitable person(s) in the required standards for inspections, recording and reporting and be satisfied that these standards are maintained.
- Investigate significant subsidence impacts.
- Identify and report any non-conformances with the SMP.
- Participate in assessment meetings to review subsidence impacts.
- Bring to the attention of the Principal Approvals any findings indicating an immediate response may be warranted.
- Bring to the attention of the Principal Approvals any non-conformances identified with the Plan provisions or ideas aimed at improving the SMP.

Survey Team Coordinator

- Collate survey data and present in an acceptable form for review at assessment meetings.
- Bring to the attention of the Principal Approvals any findings indicating an immediate response may be warranted.

- Bring to the attention of the Principal Approvals any non-conformances identified with the Plan provisions or ideas aimed at improving the SMP.

Technical Experts

- Conduct the roles assigned to them in a competent and timely manner to the satisfaction of the Principal Approvals and provide expert opinion.

Person(s) Performing Inspections

- Inform the Coordinator Environment of any non-conformances identified with the Plan, or ideas aimed at improving the SMP.
- Conduct inspections in a safe manner.

7.2 Resources Required

The Manager Approvals provides resources sufficient to implement this SMP.

Equipment will be needed for the TARP provisions of the SIMMCP and WIMMCP. Where this equipment is of a specialised nature, it will be provided by the supplier of the relevant service. All equipment is to be appropriately maintained, calibrated and serviced as required in operations manuals.

The Approvals Manager shall ensure personnel and equipment are provided as required to allow the provisions of this Plan to be implemented.

7.3 Training

All staff and contractors working on IMC sites are required to complete the IMC training program which includes:

- An initial site induction (including all relevant aspects of environment, health, safety and community);
- Safe Work Method Statements and Job Safety Analyses, Toolbox Talks and pre-shift communications; and
- On-going job specific training and re-training (where required).

It is the responsibility of the Principal Approvals to ensure that all persons and organisations having responsibilities under this SMP are trained and understand their responsibilities.

The person(s) performing regular inspections shall be under the supervision of the Coordinator Environment and be trained in observation, measurement and reporting. The Coordinator Environment shall be satisfied that the person(s) performing the inspections are capable of meeting and maintaining this standard.

7.4 Record Keeping and Control

Environmental Records are maintained in accordance with IMC document control requirements.

IMC document control requirements include:

- Documents are approved for adequacy by authorised personnel prior to use;
- Obsolete documents are promptly removed from circulation;
- Documents are reissued, or made available, to relevant persons in a timely fashion after changes have been made and the authorisation process is complete; and
- The SMP and other relevant documentation will be made available on the South32 website.

7.5 Management Plan Review

A comprehensive review of the objectives and targets associated with the Dendrobium Area 3 operations is undertaken on an annual basis via the IMC planning process. These reviews, which include involvement from senior management and other key site personnel, assess the performance of the mine over the previous year and develop goals and targets for the following period.

An Annual Review of the environmental performance of Dendrobium Area 3 operations will also be undertaken in accordance with Condition 5, Schedule 8 of the Dendrobium Development Consent. More specifically this SMP will be subject to review (and revision if necessary, to the satisfaction of the Secretary) following:

- The submission of an annual review under Condition 5, Schedule 8;

- The submission of an incident report under Condition 3, Schedule 8;
- The submission of an audit report under Condition 6, Schedule 8; and
- Any modification to the conditions of the Dendrobium Development Consent or SMP approval.

If deficiencies in the EMS and/or SMP are identified in the interim period, the plans will be modified as required. This process has been designed to ensure that all environmental documentation continues to meet current environmental requirements, including changes in technology and operational practice, and the expectations of stakeholders.

8 REFERENCES AND SUPPORTING DOCUMENTATION

Axys, 2021. Risk Assessment: *Review of Dendrobium Longwalls 22 and 23 Subsidence Management Plan, Risk Assessment Report*. AR3122 (Revision B).

BHP Billiton Illawarra Coal, 2006. *Georges River Report: Assessment of Georges River Remediation Longwalls 5A1-4*. November 2006.

Cardno, 2021. *Aquatic Flora and Fauna Review*. Illawarra Coal Holdings Pty Ltd, August 2021.

Cardno Forbes Rigby, 2007. *Dendrobium Area 3 Environmental Assessment*. Prepared for BHPBIC.

Ecoengineers, 2012. *Surface Water Quality and Hydrological Assessment: Dendrobium Area 3B Subsidence Management Plan Surface and Shallow Groundwater Assessment*.

Ecoengineers, 2012. *Level 2 TARP Independent Review and Recommendations Swamp 15b Dendrobium Area 3A*. 25 September 2012.

HGEO, 2021. *Assessment of surface water flow and quality effects of proposed Dendrobium Longwalls 22 and 23*. Report: D20368. June 2021.

Independent Expert Panel for Mining in the Catchment, 2019a, *Independent Expert Panel for Mining in the Catchment Report: Part 1. Review of specific mining activities at the Metropolitan and Dendrobium coal mines*, Prepared for the NSW Department of Planning, Industry and Environment.

Independent Expert Panel for Mining in the Catchment, 2019b, *Independent Expert Panel for Mining in the Catchment Report: Part 2. Coal Mining Impacts in the Special Areas of the Greater Sydney Water Catchment*, Prepared for the NSW Department of Planning, Industry and Environment.

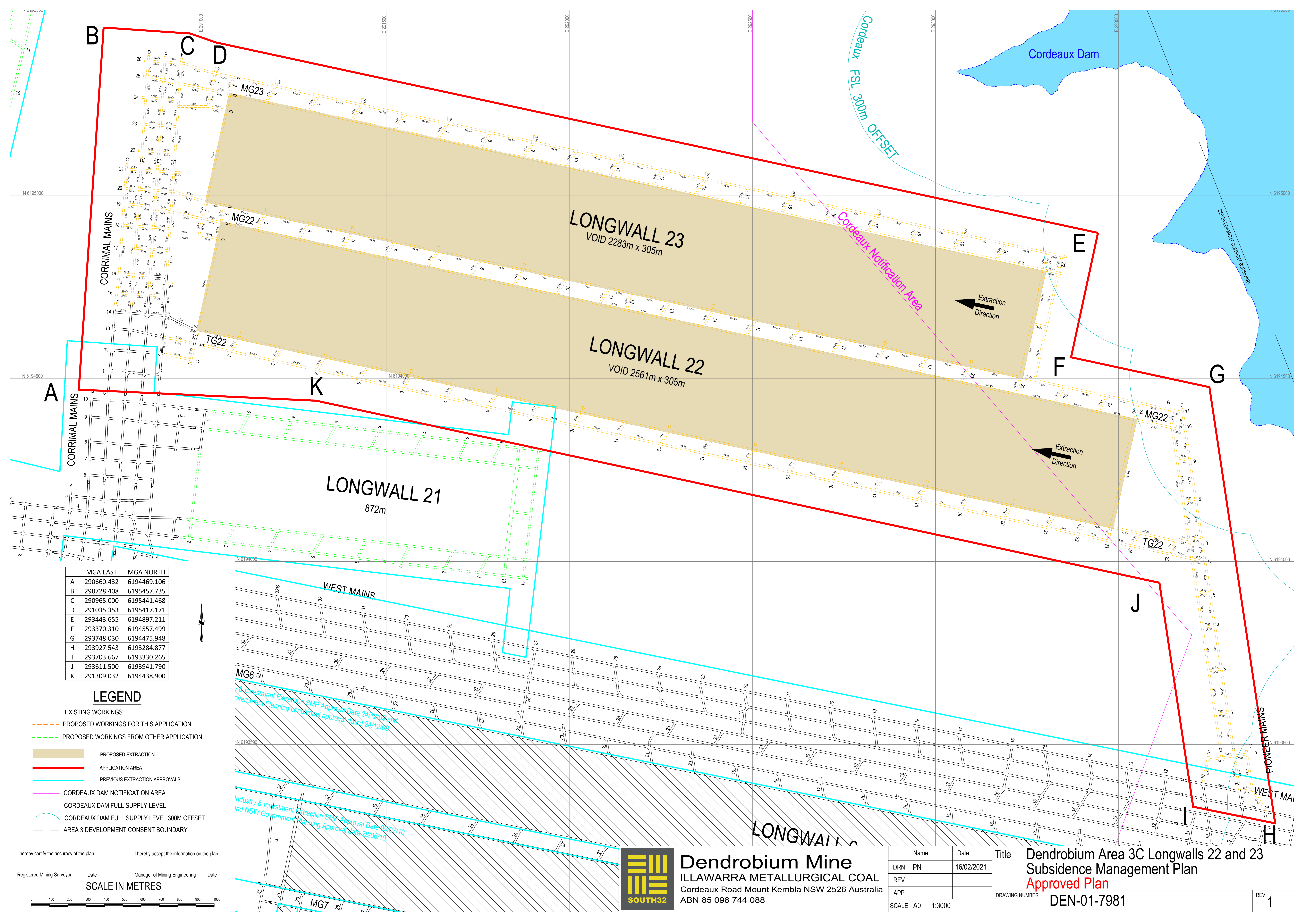
MSEC, 2021. *Dendrobium – Longwalls 22 and 23 Subsidence Predictions and Impact Assessments for the Natural and Built Features due to the Extraction of the Proposed Longwalls 22 and 23 in Area 3C at Dendrobium Mine*. MSEC1104 Rev B. June 2021.

Niche Environment and Heritage, 2021a. *Dendrobium Longwalls 22 and 23 Aboriginal Cultural Heritage Assessment*. South 32 Illawarra Metallurgical Coal. July 2021.

Niche Environment and Heritage, 2021b. *Dendrobium Longwalls 22 and 23 Terrestrial Ecological Assessment*. South 32 Illawarra Metallurgical Coal. August 2021.

Watershed Hydrogeo, 2021. *Dendrobium Mine Longwalls 22 and 23 Groundwater Assessment*. Prepared for Illawarra Coal Pty Ltd. June 2021.

Appendix 1 – Longwalls 22 and 23 - Approved Mine Plan DEN-01-8014



	MGA EAST	MGA NORTH
A	290660.432	6194469.106
B	290728.408	6195457.735
C	290965.000	6195441.468
D	291035.353	6195417.171
E	293443.655	6194897.211
F	293370.310	6194557.499
G	293748.030	6194475.948
H	293927.543	6193284.877
I	293703.667	6193330.265
J	293611.500	6193941.790
K	291309.032	6194438.900



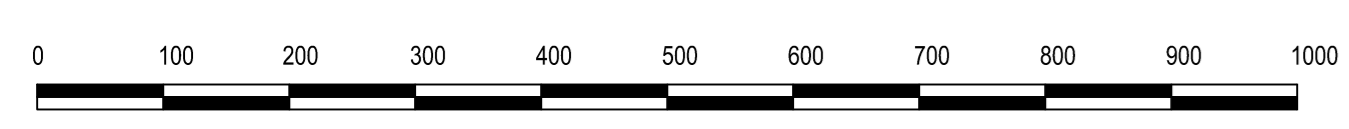
LEGEND

- EXISTING WORKINGS
- PROPOSED WORKINGS FOR THIS APPLICATION
- PROPOSED WORKINGS FROM OTHER APPLICATION
- PROPOSED EXTRACTION
- APPLICATION AREA
- PREVIOUS EXTRACTION APPROVALS
- CORDEAUX DAM NOTIFICATION AREA
- CORDEAUX DAM FULL SUPPLY LEVEL
- CORDEAUX DAM FULL SUPPLY LEVEL 300M OFFSET
- AREA 3 DEVELOPMENT CONSENT BOUNDARY

I hereby certify the accuracy of the plan. I hereby accept the information on the plan.

Registered Mining Surveyor Date Manager of Mining Engineering Date

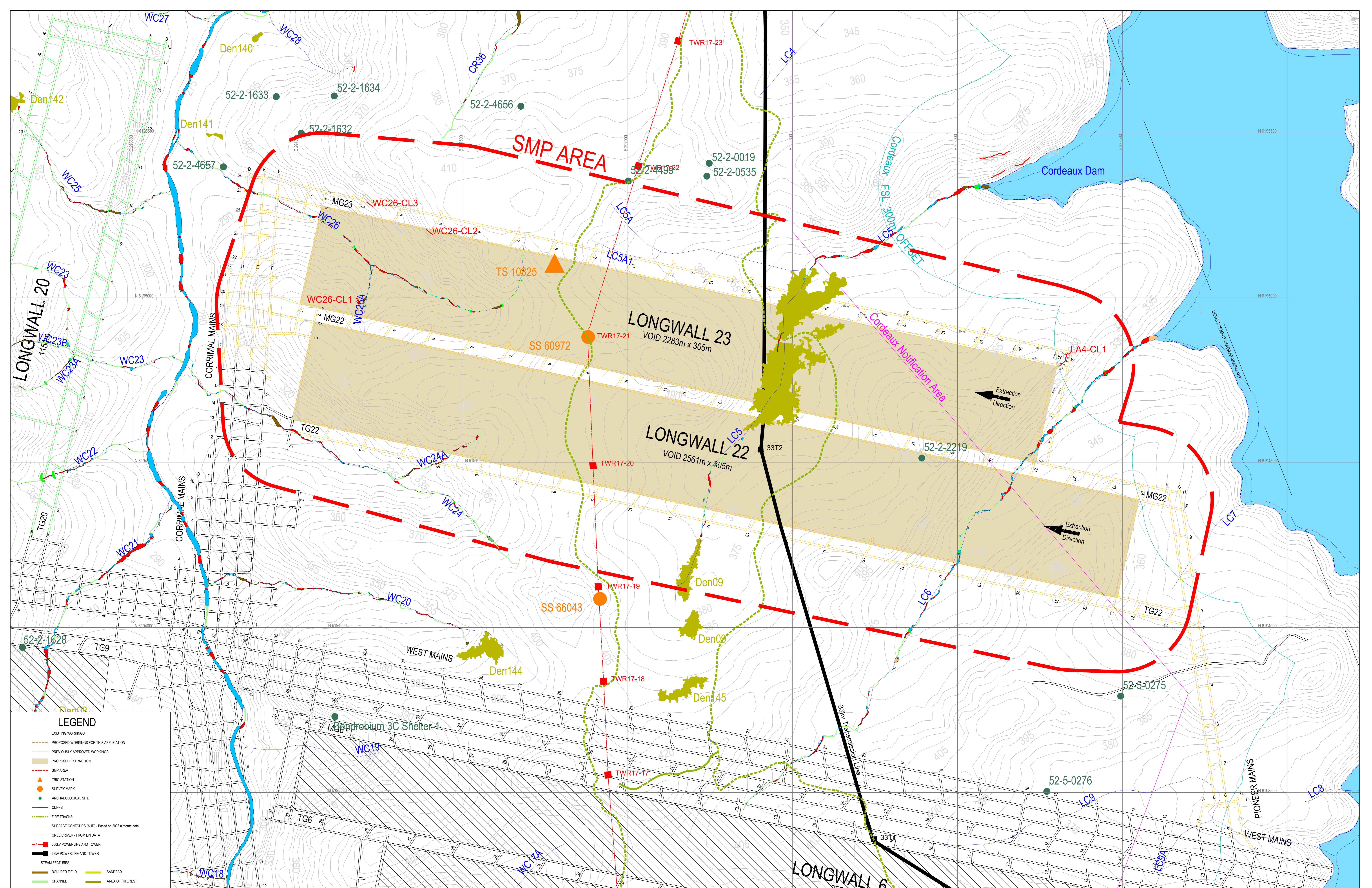
SCALE IN METRES



Dendrobium Mine
 ILLAWARRA METALLURGICAL COAL
 Cordeaux Road Mount Kembla NSW 2526 Australia
 ABN 85 098 744 088

Name	Date
DRN PN	16/02/2021
REV	
APP	
SCALE A0	1:3000

Title **Dendrobium Area 3C Longwalls 22 and 23**
Subsidence Management Plan
Approved Plan
 DRAWING NUMBER **DEN-01-7981**
 REV **1**



LEGEND

- EXISTING WORKINGS
- - - PROPOSED WORKINGS FOR THIS APPLICATION
- - - PREVIOUSLY APPROVED WORKINGS
- - - PROPOSED EXTRACTION
- - - SMP AREA
- ▲ TRIG STATION
- SURVEY MARK
- ARCHAEOLOGICAL SITE
- CLIFFS
- FIRE TRACKS
- SURFACE CONTOURS (AHD) - Based on 2003 airborne data
- CREEK/RIVER - FROM LPI DATA
- 33kV POWERLINE AND TOWER
- 33kV POWERLINE AND TOWER
- STEAM FEATURES:
 - BOULDER FIELD
 - CHANNEL
 - CASCADE
 - POOL
 - RIFFLE
 - ROCK BAR
 - ROCK SHELF
 - SANDBAR
 - AREA OF INTEREST
 - SPRING
 - SWAMP
 - STEP
 - TRIBUTARY
 - LOG JAM

SCALE IN METRES



Dendrobium Mine
 ILLAWARRA METALLURGICAL COAL
 Cordeaux Road Mount Kembla NSW 2526 Australia
 ABN 85 098 744 088

Name	Date
DRN PN	29/04/2021
REV	
APP	
SCALE	1:3500 @ A0

Title	Drawing Number	Rev
Dendrobium Area 3C Longwalls 22 and 23 Subsidence Management Plan Plan 2 - Surface Features	DEN-01-8014	0

Appendix 3 – Swamp Impact Monitoring, Management and Contingency Plan

Appendix 4 – Watercourse Impact Monitoring, Management and Contingency Plan

Attachment A – Aquatic Flora and Fauna Review

Attachment B – Groundwater Assessment

Attachment C – Subsidence Predictions and Impact Assessments

Attachment D – Risk Assessment

Attachment E – Surface Water Assessment

Attachment F – Terrestrial Ecology Assessment

Attachment G – Aboriginal Cultural Heritage Assessment