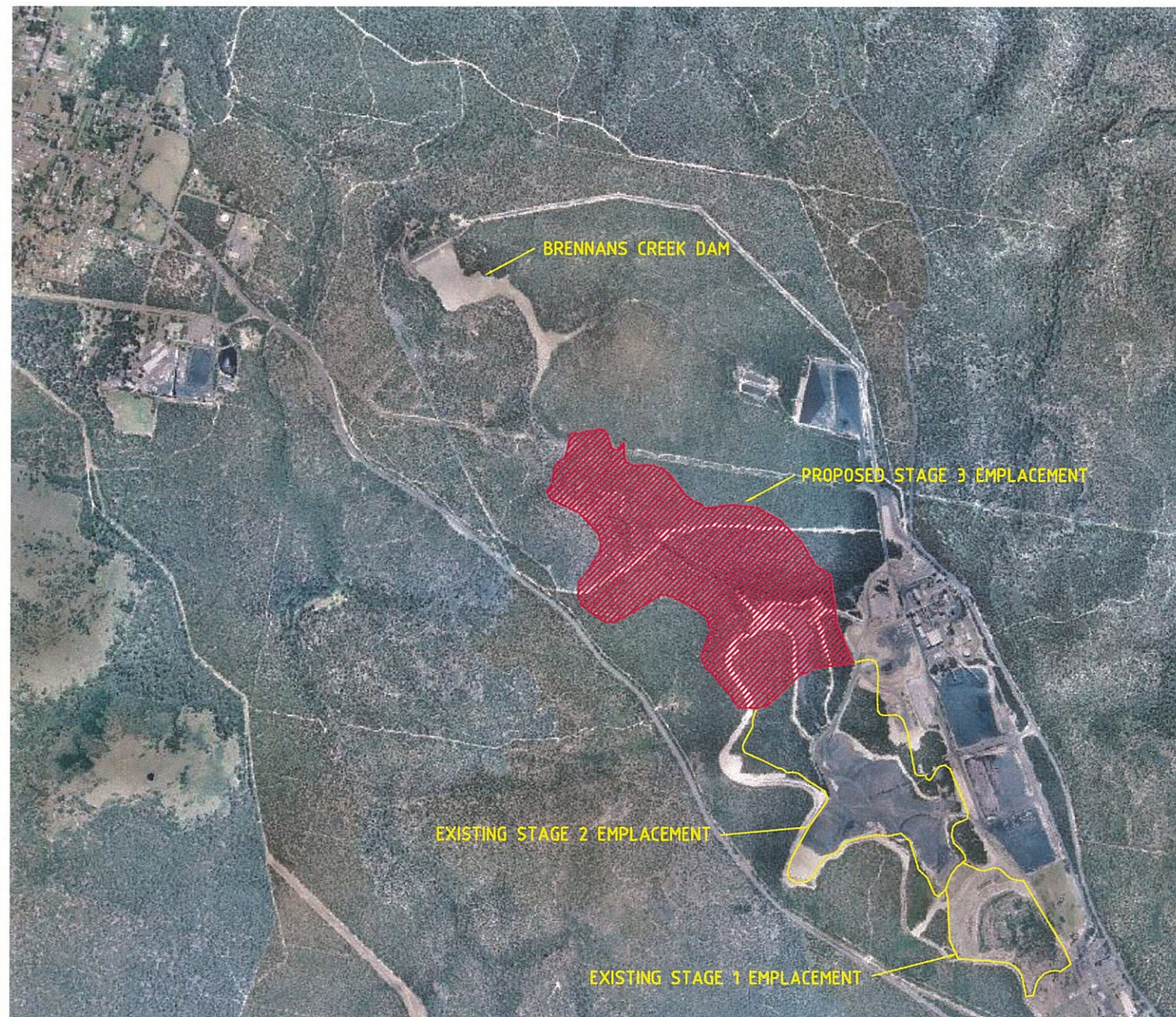


**A
P
P
E
N
D
I
X**

B

**CONCEPT DESIGN AND
STAGING DRAWINGS**

Stage 3 Emplacement West Cliff Colliery Concept Engineering Design



DRAWING SCHEDULE

1700	COVER SHEET
1701	EMBLACEMENT PHASE 1 CONCEPT DESIGN PLAN
1702	EMBLACEMENT PHASE 2 CONCEPT DESIGN PLAN
1703	EMBLACEMENT PHASE 3 CONCEPT DESIGN PLAN
1704	EMBLACEMENT PHASE 4 CONCEPT DESIGN PLAN
1705	EMBLACEMENT PHASE 5 CONCEPT DESIGN PLAN
1706	EMBLACEMENT PHASE 6 CONCEPT DESIGN PLAN
1707	EMBLACEMENT PHASE 7 CONCEPT DESIGN PLAN
1708	EMBLACEMENT LONGITUDINAL SECTION
1709	EMBLACEMENT CROSS SECTIONS SHEET 1
1710	EMBLACEMENT CROSS SECTIONS SHEET 2
1711	EMBLACEMENT POND 1 (EP1) DETAIL LAYOUT PLAN
1712	EMBLACEMENT POND 2 (EP2) DETAIL LAYOUT PLAN
1713	EMBLACEMENT POND 3 (EP3) DETAIL LAYOUT PLAN
1714	EMBLACEMENT POND 4 (EP4) DETAIL LAYOUT PLAN

FOR:

Illawarra Coal

PREPARED BY:

Cardno Forbes Rigby Pty Ltd

bhpbilliton
ILLAWARRA COAL



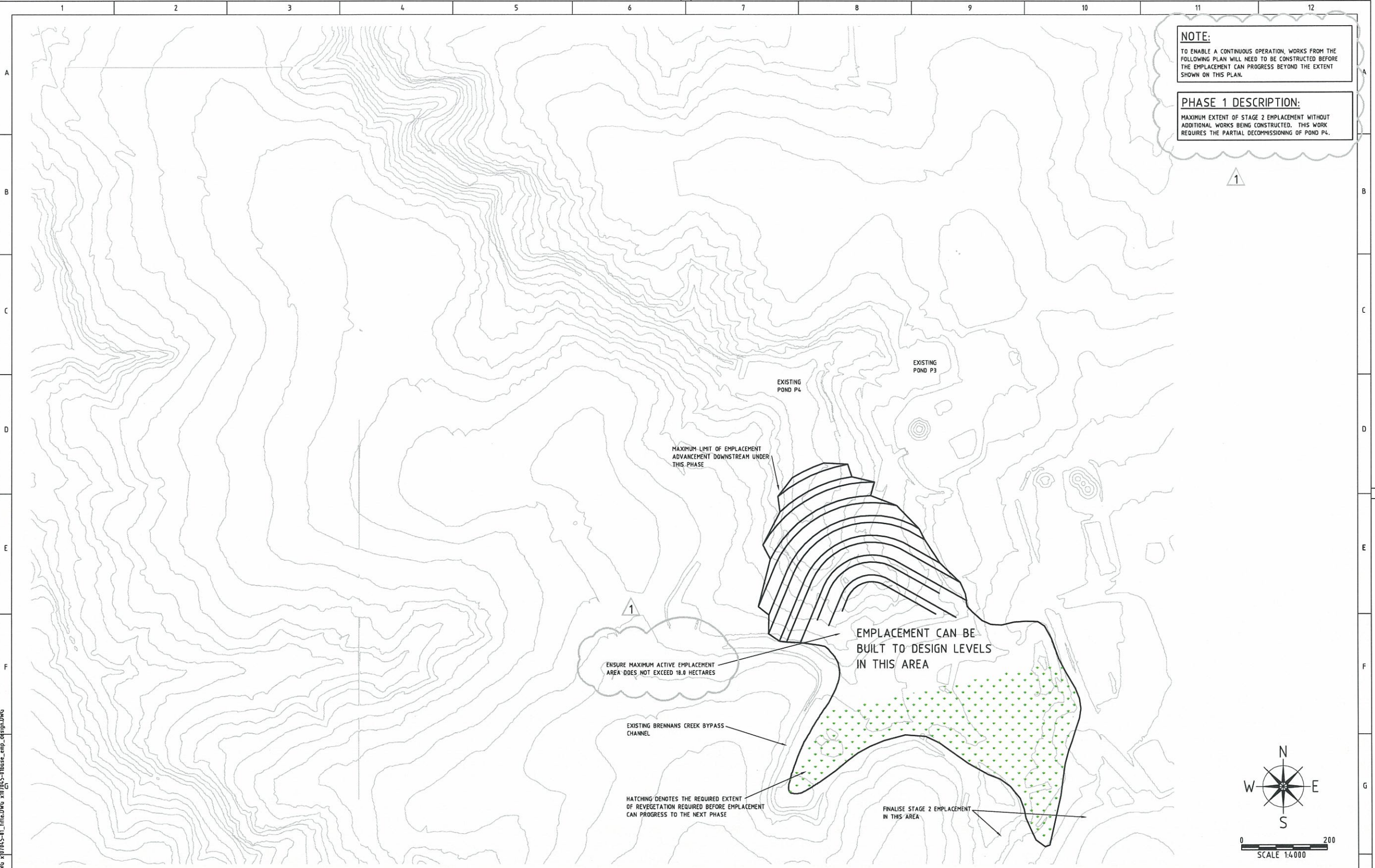
DO NOT SCALE IF IN DOUBT ASK

NOTE:

TO ENABLE A CONTINUOUS OPERATION, WORKS FROM THE FOLLOWING PLAN WILL NEED TO BE CONSTRUCTED BEFORE THE EMBANKMENT CAN PROGRESS BEYOND THE EXTENT SHOWN ON THIS PLAN.

PHASE 1 DESCRIPTION:

MAXIMUM EXTENT OF STAGE 2 EMBANKMENT WITHOUT ADDITIONAL WORKS BEING CONSTRUCTED. THIS WORK REQUIRES THE PARTIAL DECOMMISSIONING OF POND 4.



File Plotted: U:\2007\187-045-01 - WEST CLIFF STAGE 3 - APPROVALS\DRAWINGS\BUILD\701 - PHASE 1 CONCEPT DESIGN PLANNING
 Jun 29 2007 10:35:09 a.m.
 Area: 21045-01_1m.dwg


REV	DATE	BY	APP.	DETAILS
1	28/06/07	AJB	CJM	MINOR AMENDMENTS AS NOTED

DRAWING STATUS	
DESIGN BY	AJB ---/04/07
DRAWN BY	AJB 30/04/07
DRAFTING CHECK	<i>[Signature]</i> 12/07/07
DESIGN CHECK	<i>[Signature]</i> 12/07/07
FINAL APPROVAL	<i>[Signature]</i> 07/07/07

FOR APPROVAL

SCALE:
(on A1 Original)
1:4000

HEIGHT DATUM
AHD



278 KEIRA STREET, WOLLONGONG, NSW 2500
 Ph: (02) 4228 4133 Facsimile: (02) 4228 8811 ACN: 051 074 992
 This drawing is subject to COPYRIGHT. It remains the property of Cardno Forbes Rigby Pty Ltd

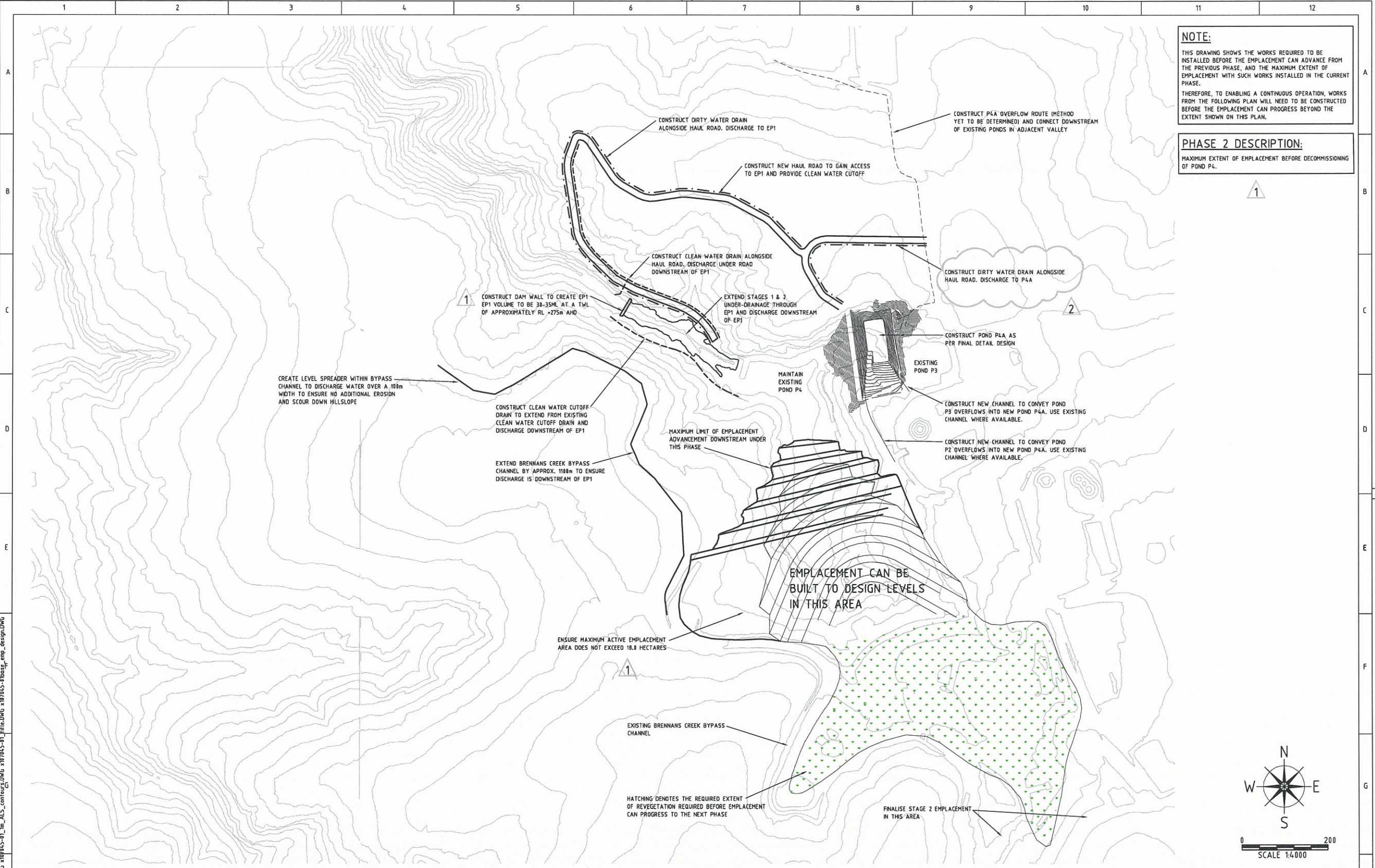
PROJECT TITLE
 WEST CLIFF COLLIERY
 STAGE 3 EMBANKMENT
 APPROVALS
 for
 ILLAWARRA COAL

DRAWING TITLE			
PHASE 1 CONCEPT ENGINEERING DESIGN PLAN			
Project No.	Com No.	Drawing No.	REV
107045	1	1701	1

DO NOT SCALE IF IN DOUBT ASK

NOTE:
 THIS DRAWING SHOWS THE WORKS REQUIRED TO BE INSTALLED BEFORE THE EMPLACEMENT CAN ADVANCE FROM THE PREVIOUS PHASE, AND THE MAXIMUM EXTENT OF EMPLACEMENT WITH SUCH WORKS INSTALLED IN THE CURRENT PHASE.
 THEREFORE, TO ENABLING A CONTINUOUS OPERATION, WORKS FROM THE FOLLOWING PLAN WILL NEED TO BE CONSTRUCTED BEFORE THE EMPLACEMENT CAN PROGRESS BEYOND THE EXTENT SHOWN ON THIS PLAN.

PHASE 2 DESCRIPTION:
 MAXIMUM EXTENT OF EMPLACEMENT BEFORE DECOMMISSIONING OF POND P4.



File Path: U:\2007\107-464-01 - WEST CLIFF STAGE 3 - APPROVALS\DRAWING\BUILD\1702 - PHASE 2 CONCEPT DESIGN PLAN.DWG
 Date: 28/06/07 3:03:21 p.m.
 User: 2107045-01 Drawing_Ver_1_LDWG 2107045-01_L_ALS contour.dwg 2107045-01_1702.dwg 2107045-01_1702.dwg


REV	DATE	BY	APP.	DETAILS
1	28/06/07	AJB	CJM	MINOR AMENDMENTS AS NOTED

DRAWING STATUS	
DESIGN BY	AJB ---/04/07
DRAWN BY	AJB 30/04/07
DRAFTING CHECK	<i>[Signature]</i> 12/07/07
DESIGN CHECK	<i>[Signature]</i> 12/07/07
FINAL APPROVAL	<i>[Signature]</i> 12/11/07

FOR APPROVAL

SCALE:
 (on A1 Original)
 1:4000

HEIGHT DATUM
 AHD


278 KEIRA STREET, WOLLONGONG, NSW 2500
 Ph: (02) 4228 4133 Facsimile: (02) 4228 8811 ACN: 051 074 992
This drawing is subject to COPYRIGHT. It remains the property of Cardno Forbes Rigby Pty Ltd

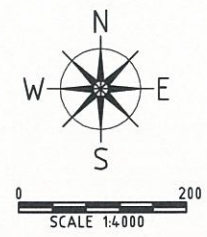
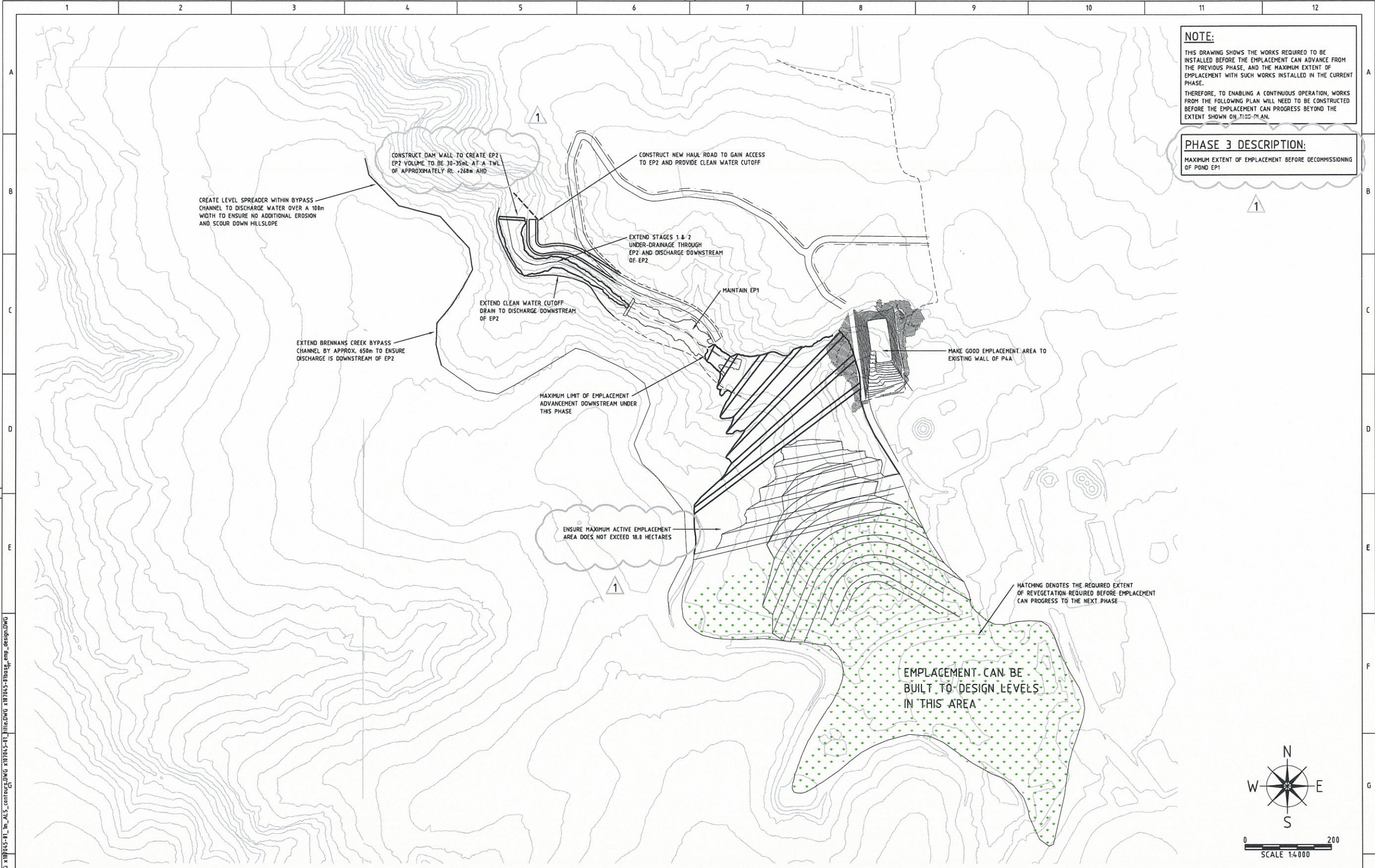
PROJECT TITLE
 WEST CLIFF COLLIERY
 STAGE 3 EMPLACEMENT
 APPROVALS
 for
 ILLAWARRA COAL

DRAWING TITLE			
PHASE 2 CONCEPT ENGINEERING DESIGN PLAN			
Project No.	Com No.	Drawing No.	REV
107045	1	1702	2

DO NOT SCALE IF IN DOUBT ASK

NOTE:
 THIS DRAWING SHOWS THE WORKS REQUIRED TO BE INSTALLED BEFORE THE EMPLACEMENT CAN ADVANCE FROM THE PREVIOUS PHASE, AND THE MAXIMUM EXTENT OF EMPLACEMENT WITH SUCH WORKS INSTALLED IN THE CURRENT PHASE.
 THEREFORE, TO ENABLING A CONTINUOUS OPERATION, WORKS FROM THE FOLLOWING PLAN WILL NEED TO BE CONSTRUCTED BEFORE THE EMPLACEMENT CAN PROGRESS BEYOND THE EXTENT SHOWN ON THIS PLAN.

PHASE 3 DESCRIPTION:
 MAXIMUM EXTENT OF EMPLACEMENT BEFORE DECOMMISSIONING OF POND EP1



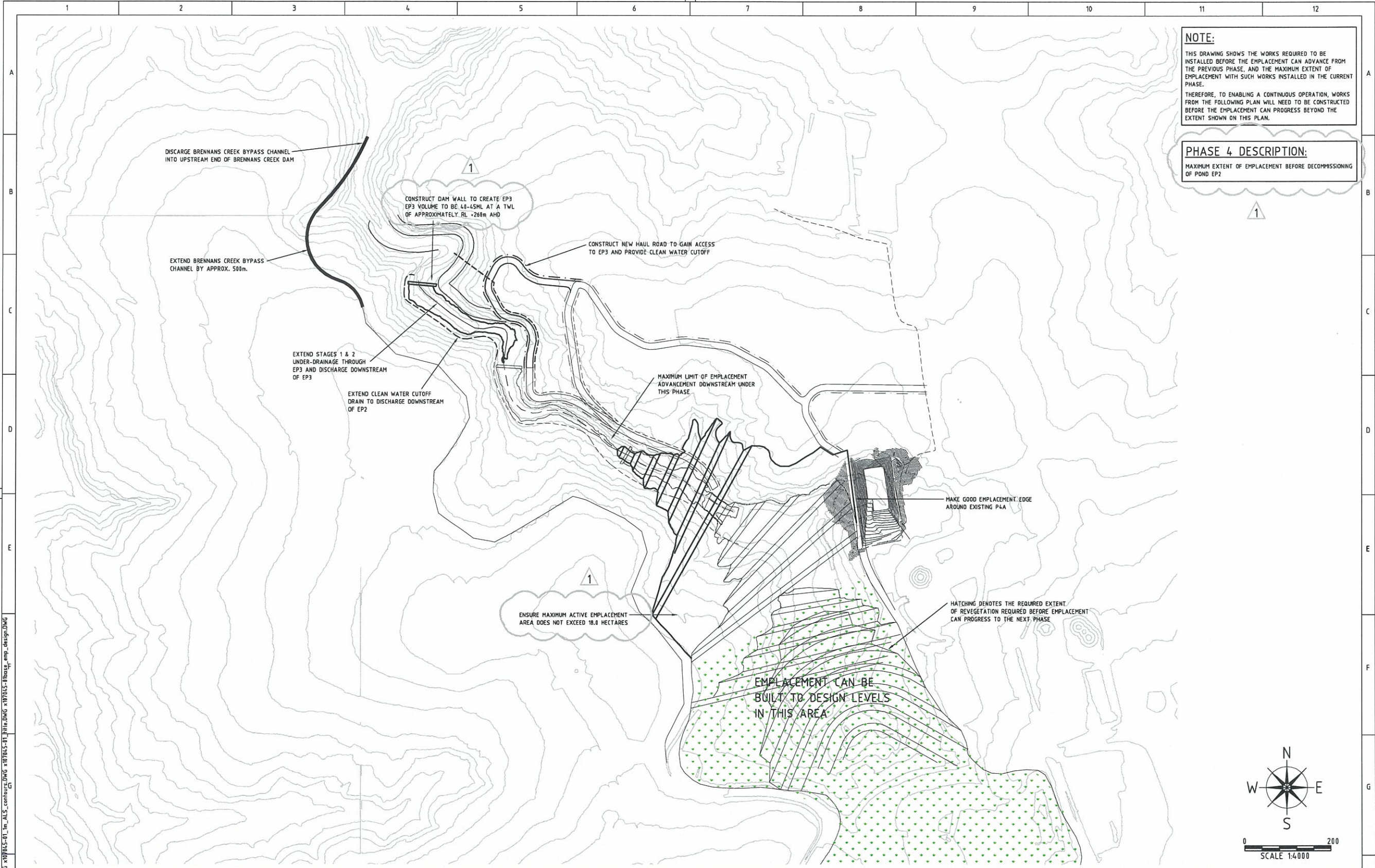
File Path: U:\2007\17045-11 - WEST CLIFF STAGE 3 - APPROVALS\DRAWING\BUILD\1703 - PHASE 3 CONCEPT DESIGN PLANNING
 June 29, 2007 10:19:58 a.m.
 Xrefs: X17045-11_Drawing_1703.dwg; X17045-11_ALS_content.dwg; X17045-11_Plane.dwg; X17045-11_Plan.dwg; emp_design.dwg

REV	DATE	BY	APP.	DETAILS	DRAWING STATUS			SCALE:	PROJECT TITLE	DRAWING TITLE			
1	28/06/07	AJB	CJM	MINOR AMENDMENTS AS NOTED	DESIGN BY	N/A	--/04/07	(on A1 Original)		Cardno Forbes Rigby 278 KEIRA STREET, WOLLONGONG, NSW 2500 Ph: (02) 4228 4133 Facsimile: (02) 4228 6811 ACN: 051 074 992 This drawing is subject to COPYRIGHT. It remains the property of Cardno Forbes Rigby Pty Ltd	WEST CLIFF COLLIERY STAGE 3 EMPLACEMENT APPROVALS for ILLAWARRA COAL		PHASE 3 CONCEPT ENGINEERING DESIGN PLAN
					DRAWN BY	AJB	30/04/07	1:4000	Project No.		Com No.	Drawing No.	REV
					DRAFTING CHECK		12/07/07	HEIGHT DATUM	107045	1	1703	1	
					DESIGN CHECK		12/07/07	AHD					
					FINAL APPROVAL		11/10/07						
					FOR APPROVAL								

DO NOT SCALE IF IN DOUBT ASK

NOTE:
 THIS DRAWING SHOWS THE WORKS REQUIRED TO BE INSTALLED BEFORE THE EMPLACEMENT CAN ADVANCE FROM THE PREVIOUS PHASE, AND THE MAXIMUM EXTENT OF EMPLACEMENT WITH SUCH WORKS INSTALLED IN THE CURRENT PHASE.
 THEREFORE, TO ENABLING A CONTINUOUS OPERATION, WORKS FROM THE FOLLOWING PLAN WILL NEED TO BE CONSTRUCTED BEFORE THE EMPLACEMENT CAN PROGRESS BEYOND THE EXTENT SHOWN ON THIS PLAN.

PHASE 4 DESCRIPTION:
 MAXIMUM EXTENT OF EMPLACEMENT BEFORE DECOMMISSIONING OF POND EP2



File Path: U:\2007\17-04-01 - WEST CLIFF STAGE 3 - APPROVALS\DRAWING\BUILD\1714 - PHASE 4 CONCEPT DESIGN PLANNING
 Date: 28/06/07 3:15:45 pm
 User: x17065-01

REV	DATE	BY	APP.	DETAILS
1	28/06/07	AJB	CJM	MINOR AMENDMENTS AS NOTED

DRAWING STATUS			
DESIGN BY	N/A	7/04/07	
DRAWN BY	N/A	30/04/07	
DRAFTING CHECK	<i>[Signature]</i>	19/07/07	
DESIGN CHECK	<i>[Signature]</i>	19/07/07	
FINAL APPROVAL	<i>[Signature]</i>	11/11/07	

FOR APPROVAL

SCALE:
 (on A1 Original)
1:4000

HEIGHT DATUM
 AHD

278 KEIRA STREET, WOLLONGONG, NSW 2500
 Ph: (02) 4228 4133 Facsimile: (02) 4228 6811 ACN: 051 074 992
 This drawing is subject to COPYRIGHT. It remains the property of Cardno Forbes Rigby Pty Ltd

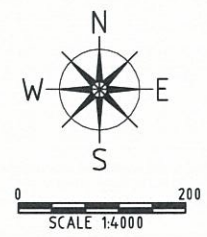
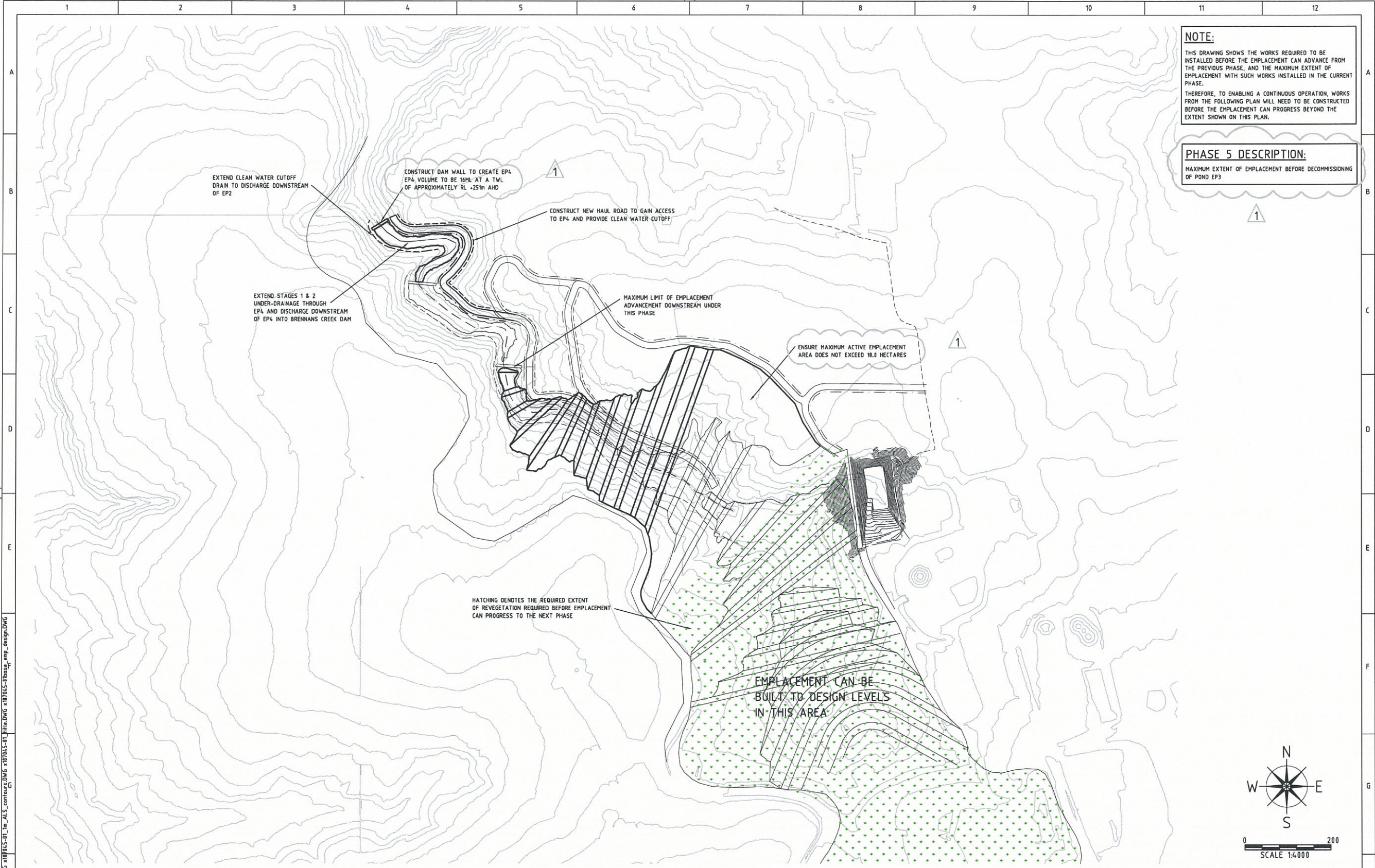
PROJECT TITLE
 WEST CLIFF COLLIERY
 STAGE 3 EMPLACEMENT
 APPROVALS
 for
 ILLAWARRA COAL

DRAWING TITLE			
PHASE 4 CONCEPT ENGINEERING DESIGN PLAN			
Project No.	Com No.	Drawing No.	REV
107045	1	1704	1

DO NOT SCALE IF IN DOUBT ASK

NOTE:
 THIS DRAWING SHOWS THE WORKS REQUIRED TO BE INSTALLED BEFORE THE EMPLACEMENT CAN ADVANCE FROM THE PREVIOUS PHASE, AND THE MAXIMUM EXTENT OF EMPLACEMENT WITH SUCH WORKS INSTALLED IN THE CURRENT PHASE.
 THEREFORE, TO ENABLING A CONTINUOUS OPERATION, WORKS FROM THE FOLLOWING PLAN WILL NEED TO BE CONSTRUCTED BEFORE THE EMPLACEMENT CAN PROGRESS BEYOND THE EXTENT SHOWN ON THIS PLAN.

PHASE 5 DESCRIPTION:
 MAXIMUM EXTENT OF EMPLACEMENT BEFORE DECOMMISSIONING OF POND EP3



File Path: U:\2007\107-045-01 - WEST CLIFF STAGE 3 - APPROVALS\DRAWING\BUILD\1705 - PHASE 5 CONCEPT DESIGN PLANNING
 June 28, 2007 3:22:23 p.m.
 Kref: x17045-01_Drawing_Mat_1.DWG x17045-01_Im_ALS_content.DWG x17045-01_Im_ALS_content.DWG x17045-01_Im_ALS_content.DWG

REV	DATE	BY	APP.	DETAILS
1	28/06/07	AJB	CJM	MINOR AMENDMENTS AS NOTED

DRAWING STATUS		
DESIGN BY	N/A	--/04/07
DRAWN BY	AJB	30/04/07
DRAFTING CHECK	<i>[Signature]</i>	12/3/07
DESIGN CHECK	<i>[Signature]</i>	12/3/07
FINAL APPROVAL	<i>[Signature]</i>	11/1/07

FOR APPROVAL

SCALE:
 (on A1 Original)
1:4000
 HEIGHT DATUM
 AHD

Cardno Forbes Rigby
 278 KEIRA STREET, WOLLONGONG, NSW 2500
 Ph: (02) 4228 4133 Facsimile: (02) 4228 6811 ACN: 051 074 992
 This drawing is subject to COPYRIGHT. It remains the property of Cardno Forbes Rigby Pty Ltd

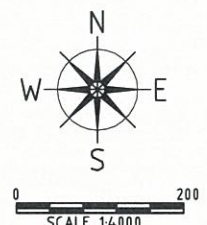
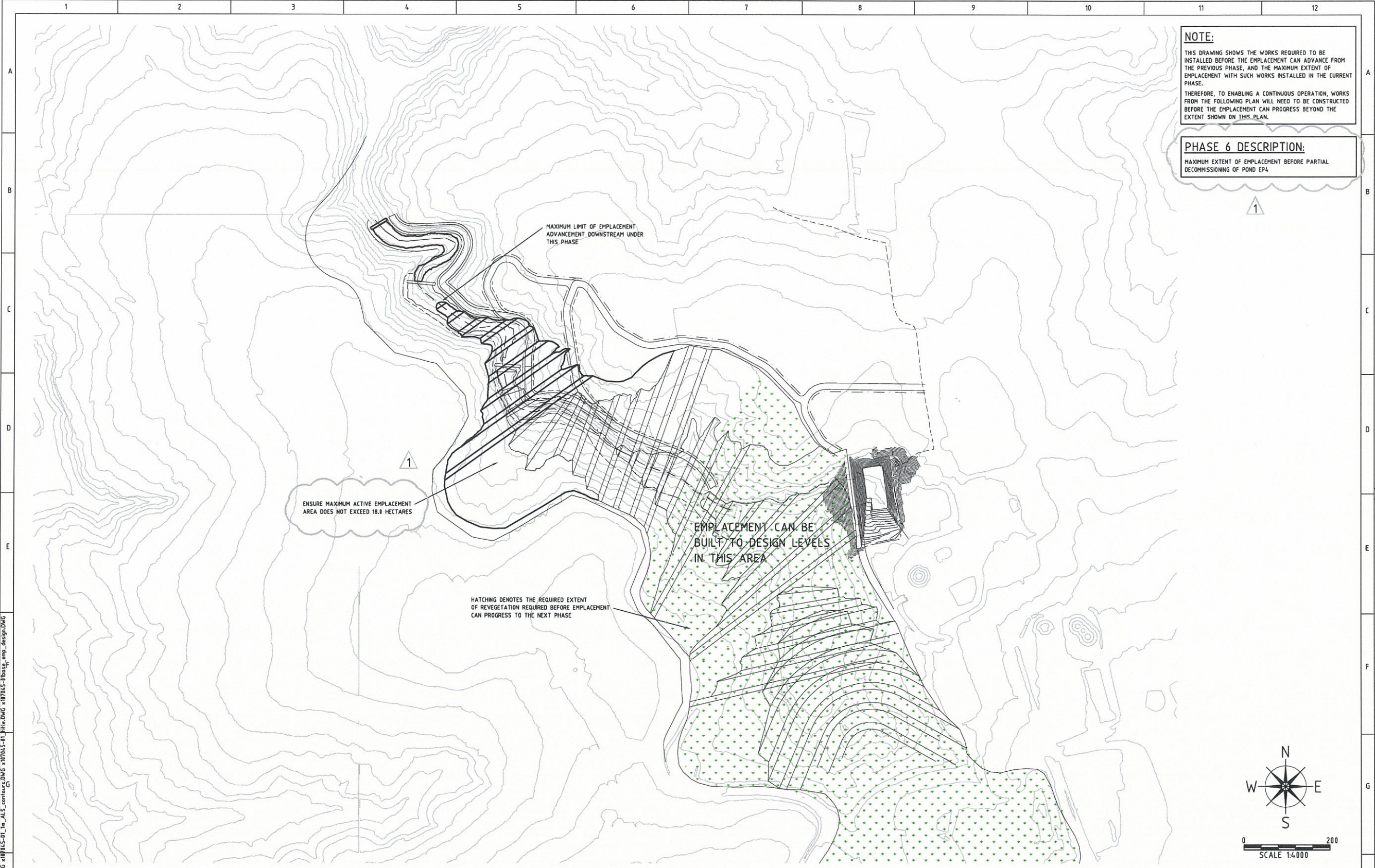
PROJECT TITLE
 WEST CLIFF COLLIERY
 STAGE 3 EMPLACEMENT
 APPROVALS
 for
 ILLAWARRA COAL

DRAWING TITLE			
PHASE 5 CONCEPT ENGINEERING DESIGN PLAN			
Project No.	Com No.	Drawing No.	REV
107045	1	1705	1

DO NOT SCALE IF IN DOUBT ASK

NOTE:
 THIS DRAWING SHOWS THE WORKS REQUIRED TO BE INSTALLED BEFORE THE EMPLACEMENT CAN ADVANCE FROM THE PREVIOUS PHASE, AND THE MAXIMUM EXTENT OF EMPLACEMENT WITH SUCH WORKS INSTALLED IN THE CURRENT PHASE.
 THEREFORE, TO ENABLING A CONTINUOUS OPERATION, WORKS FROM THE FOLLOWING PLAN WILL NEED TO BE CONSTRUCTED BEFORE THE EMPLACEMENT CAN PROGRESS BEYOND THE EXTENT SHOWN ON THIS PLAN.

PHASE 6 DESCRIPTION:
 MAXIMUM EXTENT OF EMPLACEMENT BEFORE PARTIAL DECOMMISSIONING OF POND EPA



File Plotted: U:\2007\107-045-01 - WEST CLIFF STAGE 3 - APPROVALS\DRAWING\BUILD\1706 - PHASE 6 CONCEPT DESIGN PLAN.DWG
 June 28, 2007 11:53:34 a.m.
 User: x17045-01 Drawing: Name: x17045-01_m_AIS_coming.dwg x17045-01_m_AIS_coming.dwg x17045-01_m_AIS_coming.dwg

REV	DATE	BY	APP.	DETAILS
1	28/06/07	AJB	CJM	MINOR AMENDMENTS AS NOTED

DRAWING STATUS			
DESIGN BY	N/A	---	04/07
DRAWN BY	AB	30/04/07	
DRAFTING CHECK	AB	12/7/07	
DESIGN CHECK	AB	12/7/07	
FINAL APPROVAL	WV	11/10/07	

FOR APPROVAL

SCALE:
(on A1 Original)
1:4000

HEIGHT DATUM
AHD

Cardno Forbes Rigby

278 KEIRA STREET, WOLLONGONG, NSW 2500
 Ph: (02) 4228 4133 Facsimile: (02) 4228 6811 ACN: 051 074 992
 This drawing is subject to COPYRIGHT. It remains the property of Cardno Forbes Rigby Pty Ltd

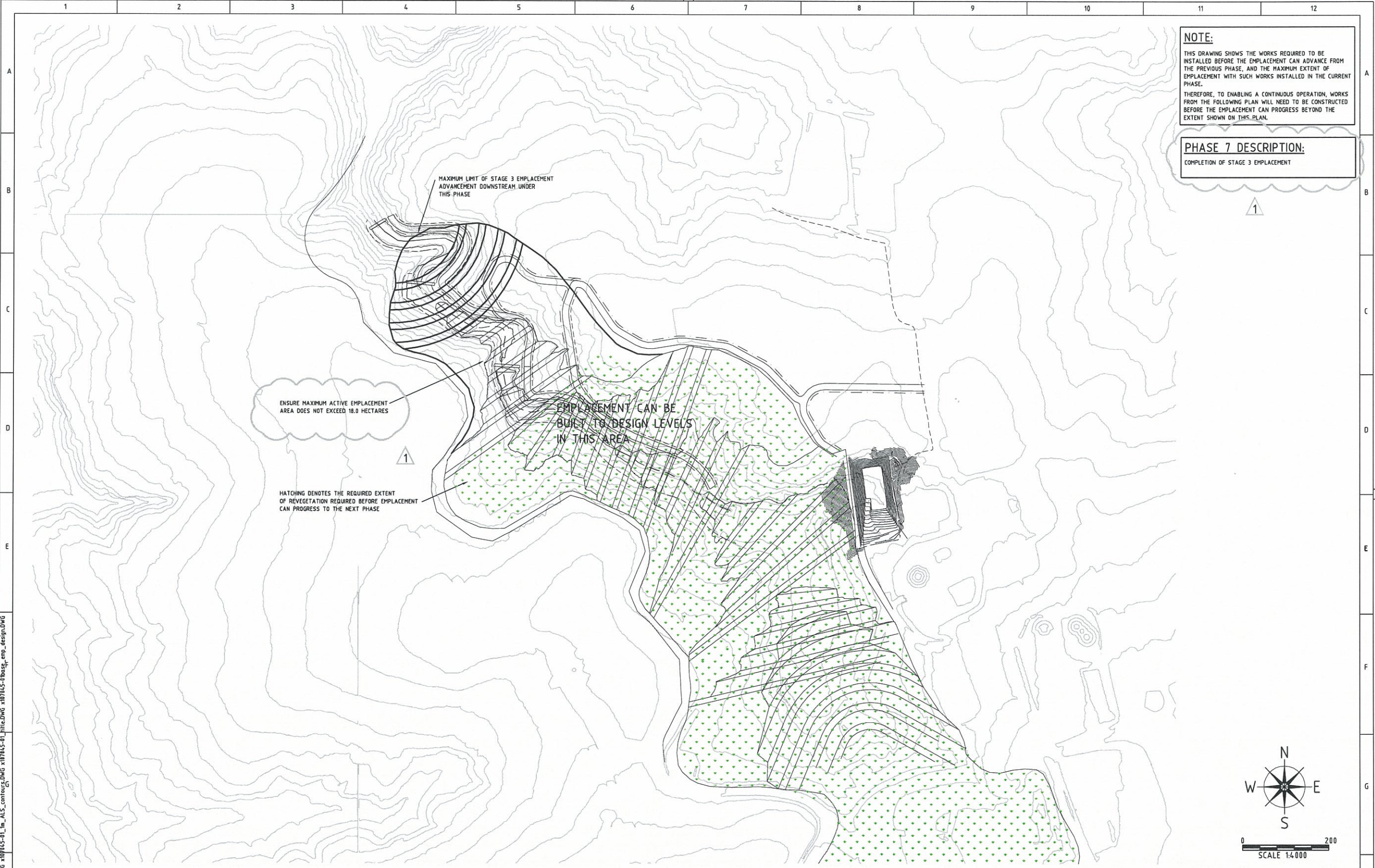
PROJECT TITLE
 WEST CLIFF COLLIERY
 STAGE 3 EMPLACEMENT
 APPROVALS
 for
 ILLAWARRA COAL

DRAWING TITLE			
PHASE 6 CONCEPT ENGINEERING DESIGN PLAN			
Project No.	Com No.	Drawing No.	REV
107045	1	1706	1


DO NOT SCALE IF IN DOUBT ASK

NOTE:
 THIS DRAWING SHOWS THE WORKS REQUIRED TO BE INSTALLED BEFORE THE EMPLACEMENT CAN ADVANCE FROM THE PREVIOUS PHASE, AND THE MAXIMUM EXTENT OF EMPLACEMENT WITH SUCH WORKS INSTALLED IN THE CURRENT PHASE.
 THEREFORE, TO ENABLING A CONTINUOUS OPERATION, WORKS FROM THE FOLLOWING PLAN WILL NEED TO BE CONSTRUCTED BEFORE THE EMPLACEMENT CAN PROGRESS BEYOND THE EXTENT SHOWN ON THIS PLAN.

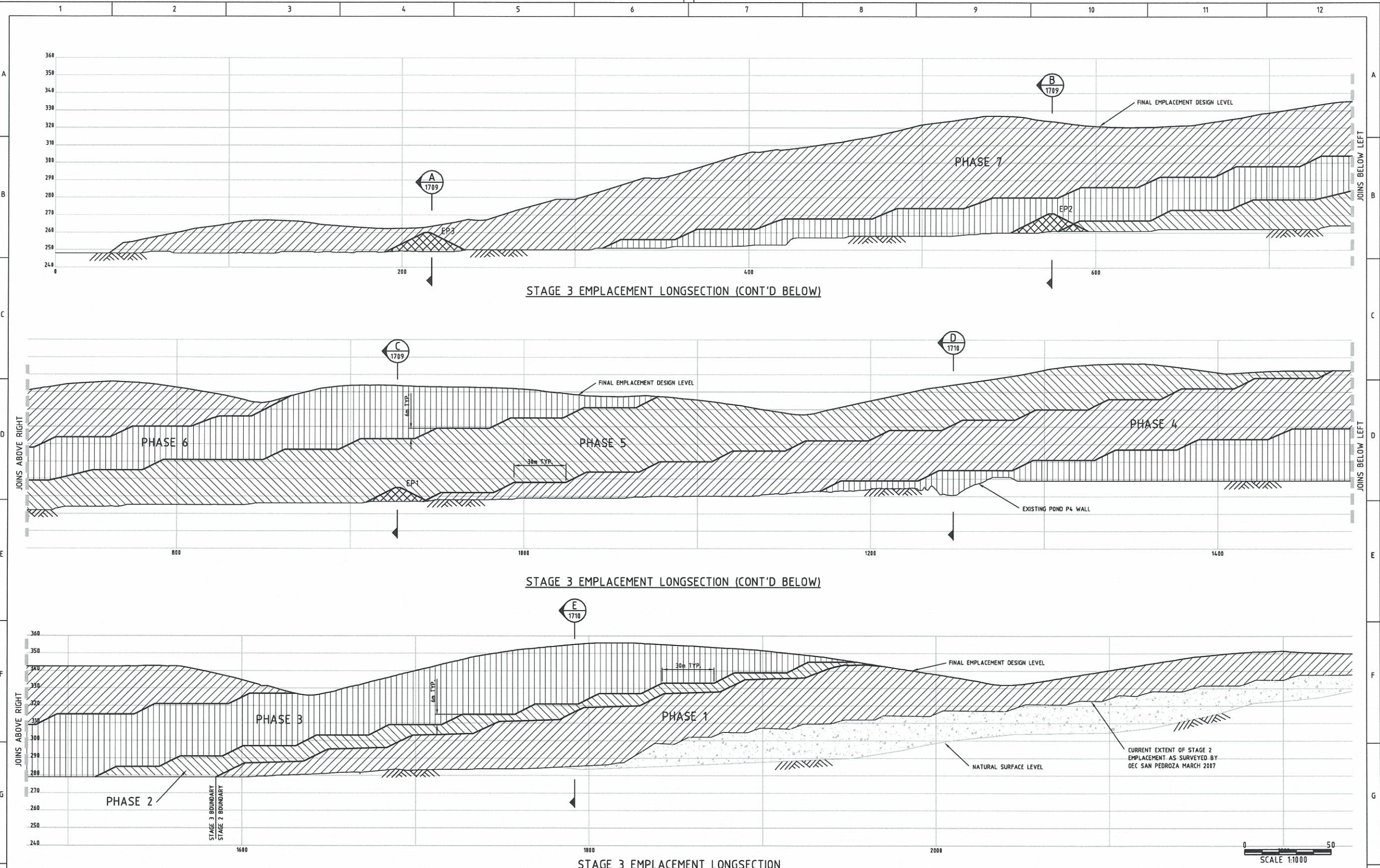
PHASE 7 DESCRIPTION:
 COMPLETION OF STAGE 3 EMPLACEMENT



File Plotted: U:\2017\107-045-11 - WEST CLIFF STAGE 3 - APPROVALS\DRAWING\BUILD\1707 - PHASE 7 CONCEPT DESIGN PLAN.DWG
 Date: 28/07/2017 14:45:55 a.m.
 User: x17045-01.Drawing

REV	DATE	BY	APP.	DETAILS	DRAWING STATUS		SCALE: (on A1 Original) 1:4000	HEIGHT DATUM AHD	 278 KEIRA STREET, WOLLONGONG, NSW 2500 Ph: (02) 4228 4133 Facsimile: (02) 4228 6811 ACN: 051 074 992 This drawing is subject to COPYRIGHT. It remains the property of Cardno Forbes Rigby Pty Ltd	PROJECT TITLE		DRAWING TITLE		
					DESIGN BY	N/A				---	04/07	WEST CLIFF COLLIERY STAGE 3 EMPLACEMENT APPROVALS for ILLAWARRA COAL		PHASE 7 CONCEPT ENGINEERING DESIGN PLAN
					DRAWN BY	N/A	30/04/07				Project No.	Com No.	Drawing No.	REV
					DRAFTING CHECK						107045	1	1707	1
					DESIGN CHECK									
					FINAL APPROVAL									
					FOR APPROVAL									

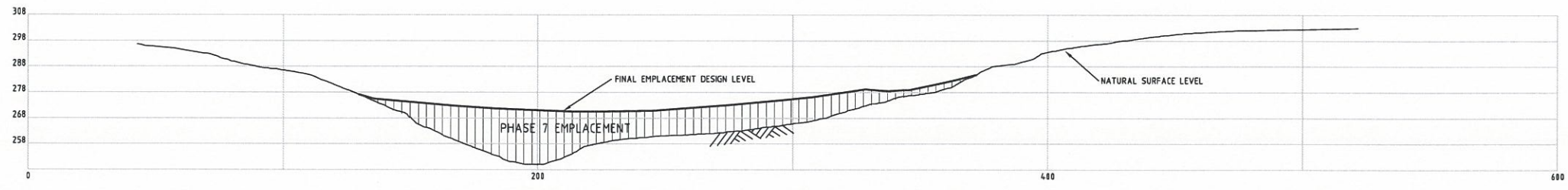
DO NOT SCALE IF IN DOUBT ASK



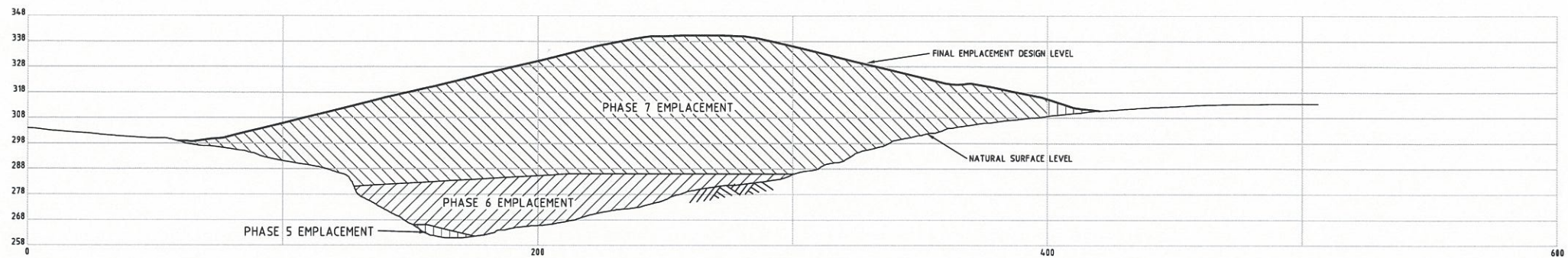
REV	DATE	BY	APP.	DETAILS	DRAWING STATUS		SCALE:	 278 KEIRA STREET, WOLLONGONG, NSW 2500 Ph: (02) 4228 4133 Facsimile: (02) 4228 6811 ACN: 051 074 992 This drawing is subject to COPYRIGHT. It remains the property of Cardno Forbes Rigby Pty Ltd	PROJECT TITLE		DRAWING TITLE		
					DESIGN BY	AJB	--/04/07		1:1000N	WEST CLIFF COLLIERY STAGE 3 EMBLEMENT APPROVALS		STAGE 3 EMBLEMENT LONGITUDINAL SECTION CONCEPT DESIGN	
					DRAWN BY	AJB	01/05/07			for ILLAWARRA COAL		Project No.	Com No.
					DRAFTING CHECK							107045	1
					DESIGN CHECK							Drawing No.	REV
					FINAL APPROVAL							1708	0
					FOR APPROVAL								

File: P:\2007\107-005-01 - WEST CLIFF STAGE 3 - APPROVALS\DRAWING\BUILD\1708 - LONGSECTION.DWG
 June 05, 2007 3:44:17 p.m.
 Xrefs: x:\107\005-01\Title.dwg

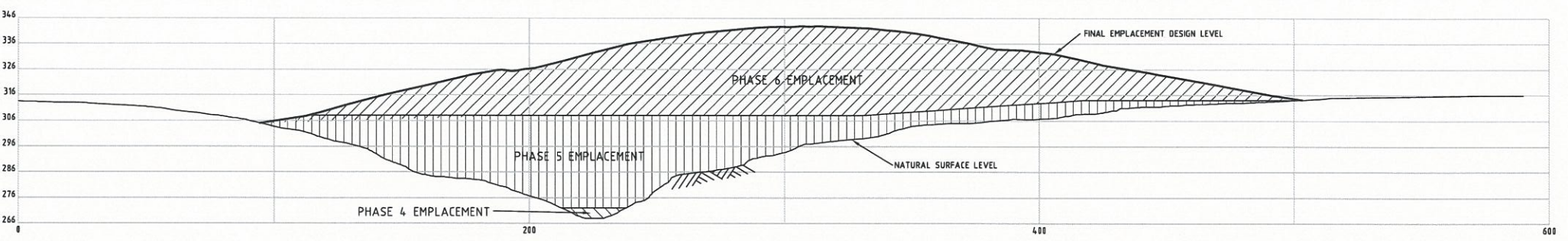
DO NOT SCALE IF IN DOUBT ASK



SECTION A
SCALE 1:1000 1708



SECTION B
SCALE 1:1000 1708



SECTION C
SCALE 1:1000 1708



File Path: U:\2007\1708-05-11 - WEST CLIFF STAGE 3 - APPROVALS\DRAWINGS\BUILD\1708 - CROSS SECTIONS SHEET 1.DWG
June 06, 2007 3:44:26 p.m.
User: x17085-01_1708.dwg

REV	DATE	BY	APP.	DETAILS

DRAWING STATUS	
DESIGN BY	AJB --/04/07
DRAWN BY	AJB 02/09/07
DRAFTING CHECK	<i>[Signature]</i> 12/3/07
DESIGN CHECK	<i>[Signature]</i> 12/3/07
FINAL APPROVAL	<i>[Signature]</i> 11/10/07
FOR APPROVAL	

SCALE:
(on A1 Original)
1:1000

HEIGHT DATUM
AHD

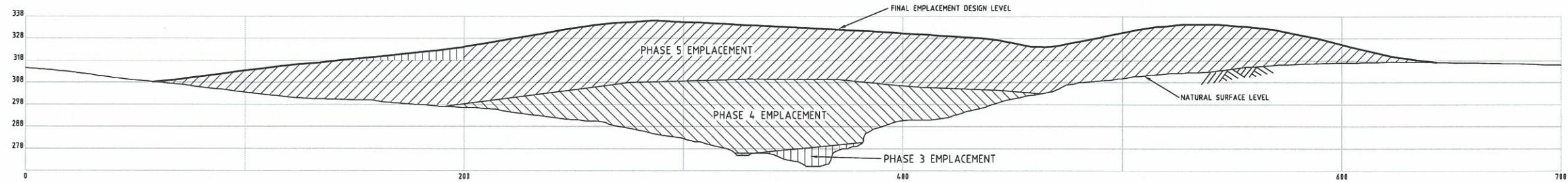
**Cardno
Forbes Rigby**

278 KEIRA STREET, WOLLONGONG, NSW 2500
Ph: (02) 4228 4133 Facsimile: (02) 4228 8811 ACN: 051 074 992
This drawing is subject to COPYRIGHT. It remains the property of Cardno Forbes Rigby Pty Ltd

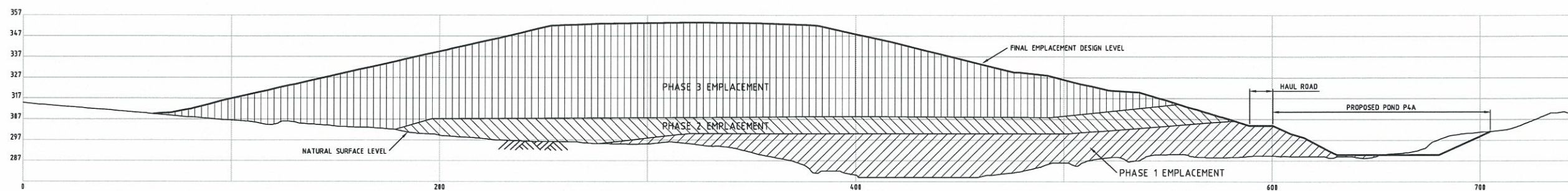
PROJECT TITLE
WEST CLIFF COLLIERY
STAGE 3 EMPLACEMENT
APPROVALS
for
ILLAWARRA COAL

DRAWING TITLE			
STAGE 3 EMPLACEMENT CONCEPT DESIGN CROSS SECTIONS SHEET 1			
Project No.	Com No.	Drawing No.	REV
107045	1	1709	0

DO NOT SCALE IF IN DOUBT ASK




SECTION D
SCALE 1:1000



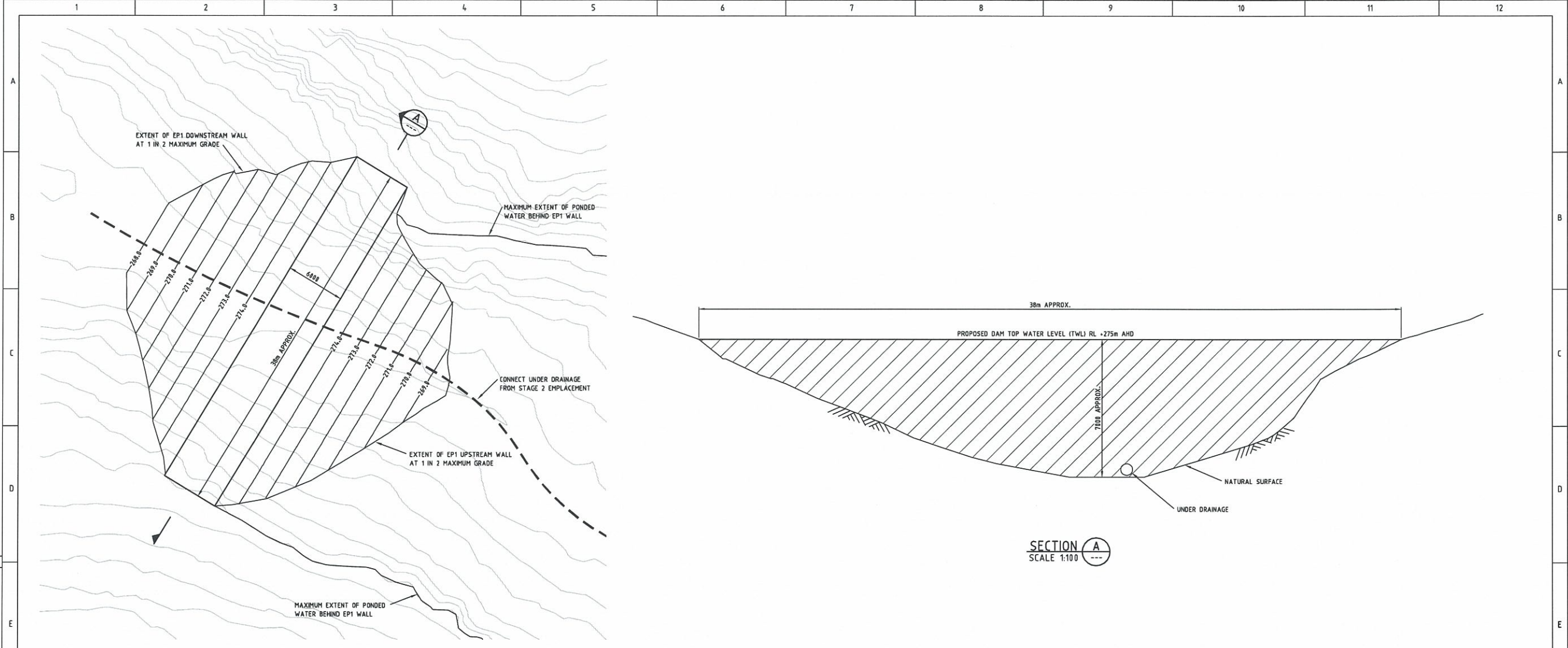
SECTION E
SCALE 1:1000



File Path: U:\2007\107-045-01 - WEST CLIFF STAGE 3 - APPROVALS\DRAWING\BUILD\110 - CROSS SECTIONS SHEET 2.DWG
June 06, 2007 3:44:53 p.m.
User: x171945-01, Title: Dwg

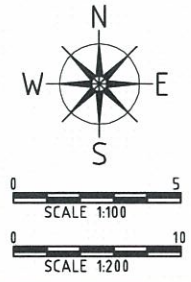
REV	DATE	BY	APP.	DETAILS	DRAWING STATUS		SCALE:	 278 KEIRA STREET, WOLLONGONG, NSW 2500 Ph: (02) 4228 4133 Facsimile: (02) 4228 8811 ACN: 051 074 992 This drawing is subject to COPYRIGHT. It remains the property of Cardno Forbes Rigby Pty Ltd	PROJECT TITLE		DRAWING TITLE				
					DESIGN BY	AJB	--/04/07		1:1000N	WEST CLIFF COLLIERY STAGE 3 EMPLACEMENT APPROVALS for ILLAWARRA COAL		STAGE 3 EMPLACEMENT CONCEPT DESIGN CROSS SECTIONS SHEET 2			
					DRAWN BY	<i>[Signature]</i>	02/05/07	Project No.				Com No.	Drawing No.	REV	
					DRAFTING CHECK	<i>[Signature]</i>	12/07/07	HEIGHT DATUM			107045	1	1710	0	
					DESIGN CHECK	<i>[Signature]</i>	12/07/07	AHD							
					FINAL APPROVAL	<i>[Signature]</i>	12/07/07								
					FOR APPROVAL										

DO NOT SCALE IF IN DOUBT ASK



CONCEPT DESIGN PLAN ON EMPLACEMENT POND 1 (EP1)
MAXIMUM CAPACITY 35ML


SECTION A
SCALE 1:100



File Path: U:\2007\107-045-31 - WEST CLIFF STAGE 3 - APPROVALS\DRAWING\BUILD\711 - EP1 DETAIL LAYOUT PLANNING
 June 05, 2007 3:49:21 p.m.
 Xrefs: x1707045-31_m_A1.dwg; x1707045-31_base.dwg; x1707045-31_base_emp.dwg; x1707045-31_base_emp.dwg

REV	DATE	BY	APP.	DETAILS	DRAWING STATUS
					DESIGN BY: AJB / 05/07
					DRAWN BY: AJB / 03/05/07
					DRAFTING CHECK: [Signature] / 13/07/07
					DESIGN CHECK: [Signature] / 13/07/07
					FINAL APPROVAL: [Signature] / 13/07/07
FOR APPROVAL					

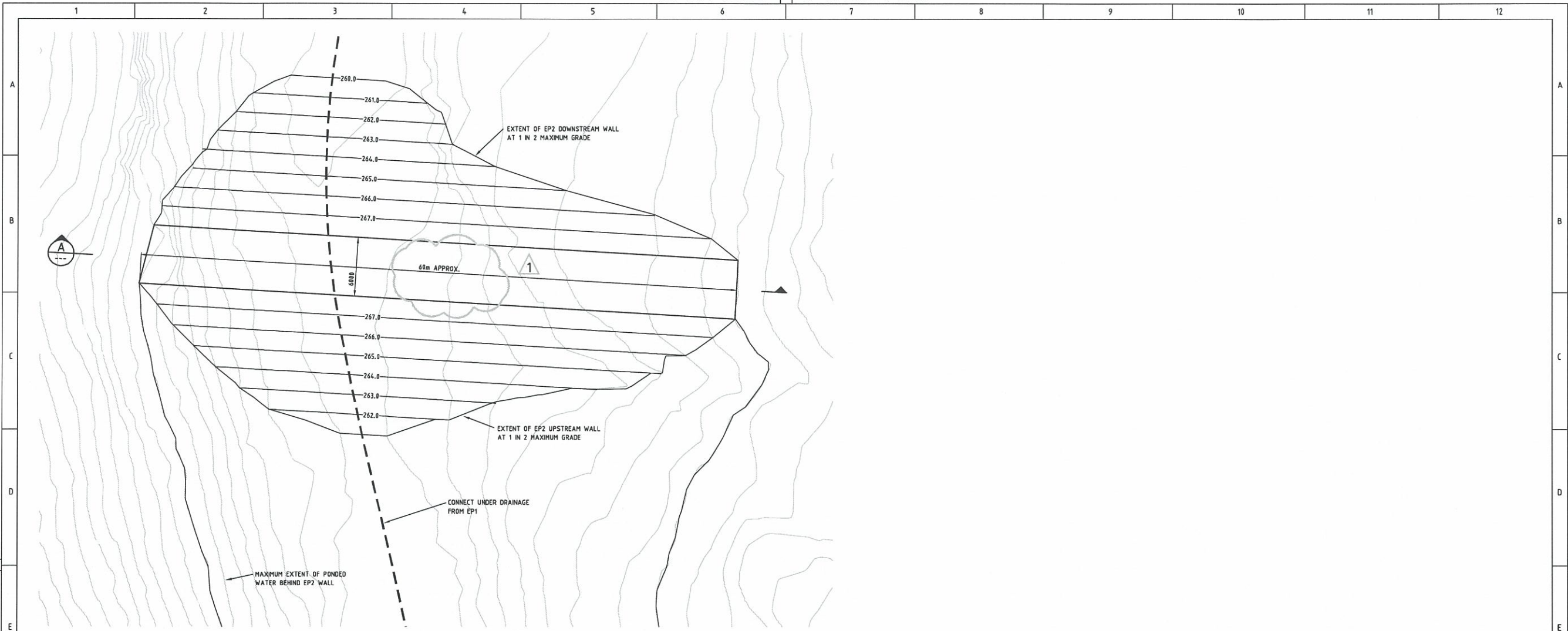
SCALE:
(on A1 Original)
1:200
HEIGHT DATUM
AHD


 278 KEIRA STREET, WOLLONGONG, NSW 2500
 Ph: (02) 4228 4133 Facsimile: (02) 4228 6811 ACN 003 936 981
 This drawing is subject to COPYRIGHT. It remains the property of Forbes Rigby Pty Ltd

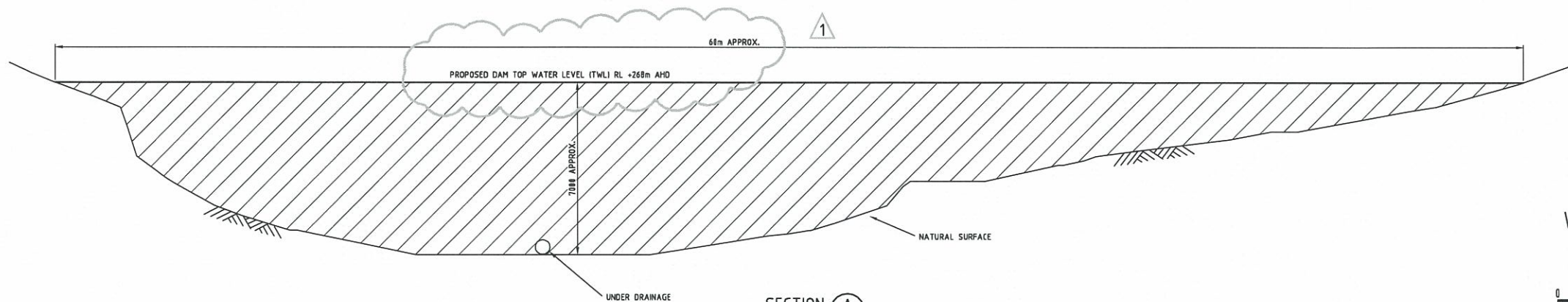
PROJECT TITLE
 WEST CLIFF COLLIERY
 STAGE 3 EMPLACEMENT
 APPROVALS
 for
 ILLAWARRA COAL

DRAWING TITLE			
CONCEPT DESIGN EMPLACEMENT POND EP1			
Project No.	Com No.	Drawing No.	REV
107045	1	1711	0

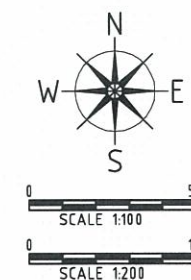
DO NOT SCALE IF IN DOUBT ASK



CONCEPT DESIGN PLAN ON EMPLACEMENT POND 1 (EP2)
MAXIMUM CAPACITY 33.0ML



SECTION A
SCALE 1:100



File Path: U:\2007\107-045-31 - WEST CLIFF STAGE 3 - APPROVALS\DRAWING\BUILD\1712 - EP2 DETAIL LAYOUT PLANNING
 June 29, 2007 10:52:24 a.m.
 User: x107045-31_m_a\j...

REV	DATE	BY	APP.	DETAILS	DRAWING STATUS
1	28/06/07	AJB	CJM	MINOR AMENDMENTS AS NOTED	DESIGN BY: AJB ---/05/07 DRAWN BY: AJB 03/05/07 DRAFTING CHECK: [Signature] 12/9/07 DESIGN CHECK: [Signature] 12/7/07 FINAL APPROVAL: [Signature] 17/7/07
					FOR APPROVAL

SCALE:
(on A1 Original)
1:200
HEIGHT DATUM
AHD

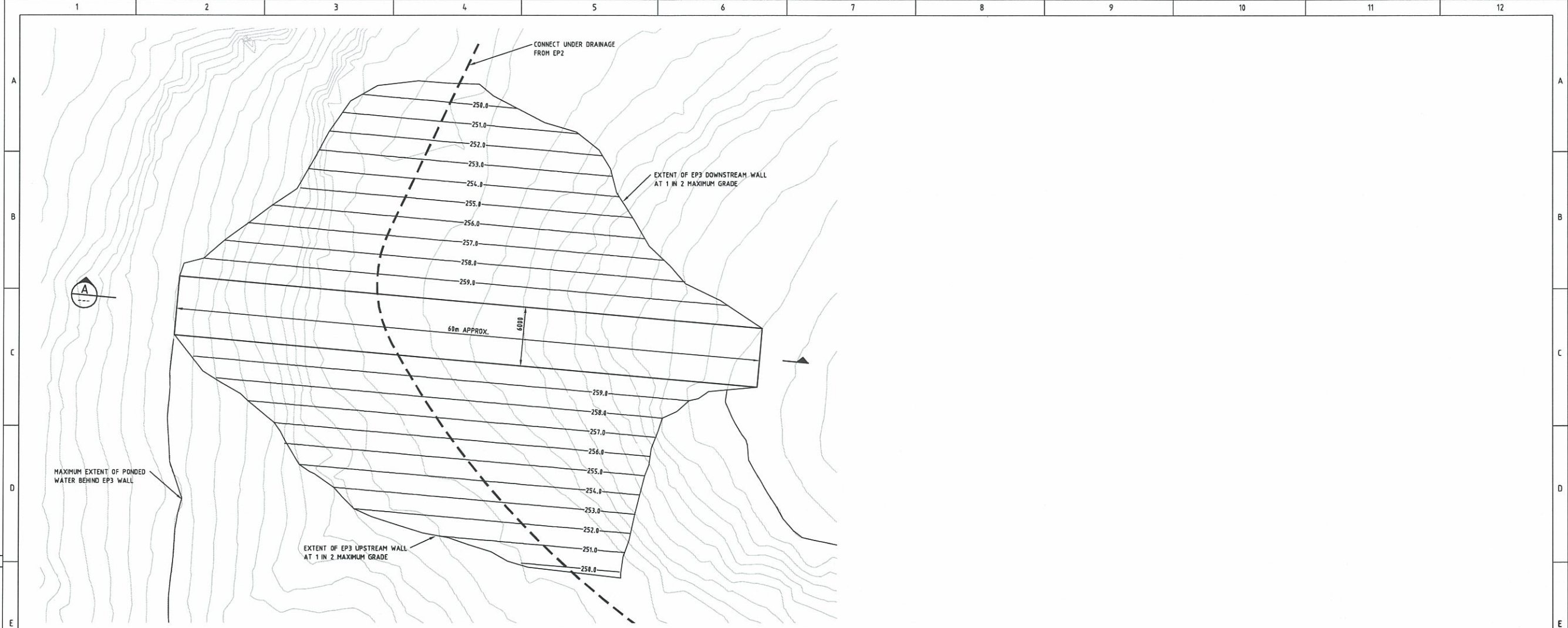
Cardno Forbes Rigby

278 KEIRA STREET, WOLLONGONG, NSW 2500
Ph: (02) 4228 4133 Facsimile: (02) 4228 6811 ACN 003 936 981
This drawing is subject to COPYRIGHT. It remains the property of Forbes Rigby Pty Ltd

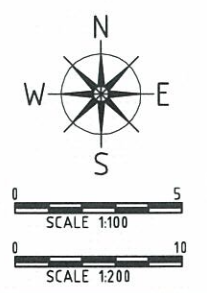
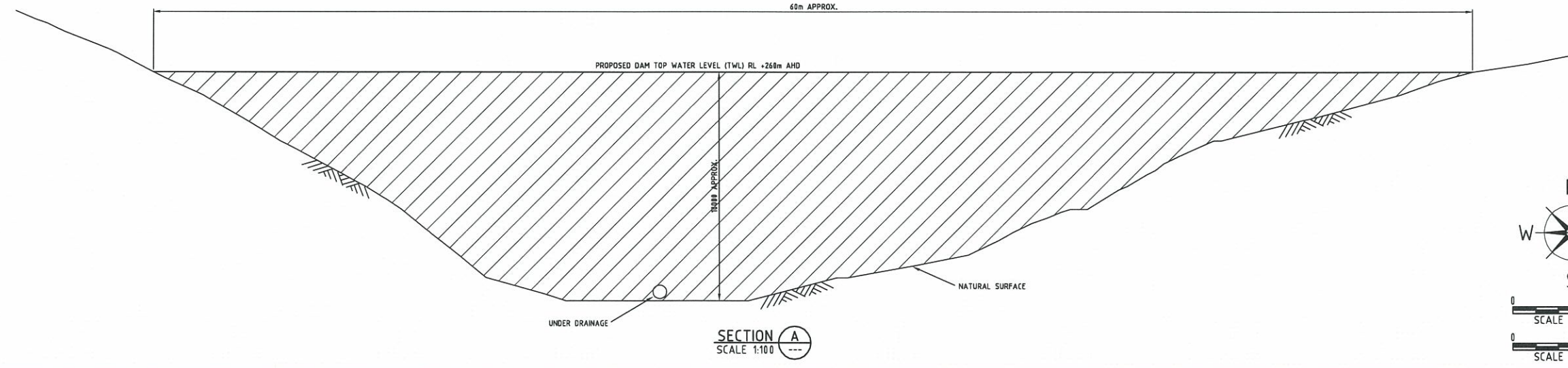
PROJECT TITLE
WEST CLIFF COLLIERY
STAGE 3 EMPLACEMENT
APPROVALS
for
ILLAWARRA COAL

DRAWING TITLE			
CONCEPT DESIGN EMPLACEMENT POND EP2			
Project No.	Com No.	Drawing No.	REV
107045	1	1712	1

DO NOT SCALE IF IN DOUBT ASK



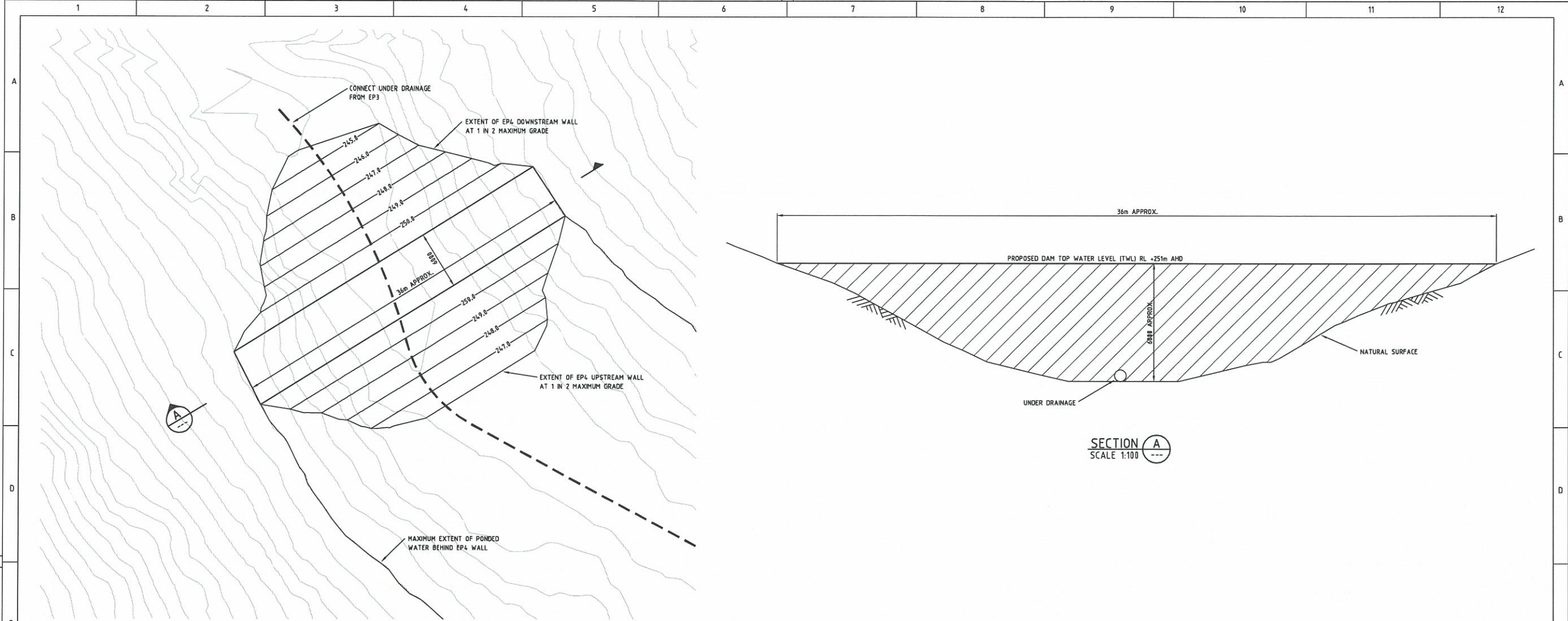
CONCEPT DESIGN PLAN ON EMPLACEMENT POND 1 (EP3)
MAXIMUM CAPACITY 46ML



File Plotted: U:\2007\107-045-31 - WEST CLIFF STAGE 3 - APPROVALS\DRAWING\BUILD\713 - EP3 DETAIL LAYOUT PLANNING
 June 05, 2007 3:54:48 p.m.
 Xrefs: x:\7045-31_m_a\15_contours.dwg x:\7045-81_111.dwg

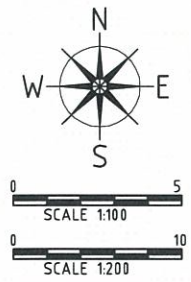
REV	DATE	BY	APP.	DETAILS	DRAWING STATUS		SCALE: (on A1 Original) 1:200	HEIGHT DATUM AHD	278 KEIRA STREET, WOLLONGONG, NSW 2500 Ph: (02) 4228 4133 Facsimile: (02) 4228 6811 ACN 003 936 981 This drawing is subject to COPYRIGHT. It remains the property of Forbes Rigby Pty Ltd	PROJECT TITLE WEST CLIFF COLLIERY STAGE 3 EMPLACEMENT APPROVALS for ILLAWARRA COAL	DRAWING TITLE CONCEPT DESIGN EMPLACEMENT POND EP3				
					DESIGN BY AJB	DATE --/05/07					Project No. 107045	Com No. 1	Drawing No. 1713	REV 0	
					DRAWN BY AJB	03/05/07									
					DRAFTING CHECK <i>[Signature]</i>										
					DESIGN CHECK <i>[Signature]</i>										
					FINAL APPROVAL <i>[Signature]</i>										
					FOR APPROVAL										

DO NOT SCALE IF IN DOUBT ASK



CONCEPT DESIGN PLAN ON EMPLACEMENT POND 1 (EP4)
MAXIMUM CAPACITY 16ML

SECTION A
SCALE 1:100



File Path: U:\2007\17-04-05-31 - WEST CLIFF STAGE 3 - APPROVALS\DRAWING\BUILD\1714 - EP4 DETAIL LAYOUT PLANNING
 June 06, 2007 3:56:38 p.m.
 Xrefs: x171045-01_m_a15_cantour.dwg x171045-01_r11c.dwg


REV	DATE	BY	APP.	DETAILS

DRAWING STATUS	
DESIGN BY	AJB ---/05/07
DRAWN BY	AJB 03/05/07
DRAFTING CHECK	<i>[Signature]</i> 22/2/07
DESIGN CHECK	<i>[Signature]</i> 12/5/07
FINAL APPROVAL	<i>[Signature]</i> 11/7/07

FOR APPROVAL

SCALE:
(on A1 Original)
1:200

HEIGHT DATUM
AHD


Cardno Forbes Rigby
 278 KEIRA STREET, WOLLONGONG, NSW 2500
 Ph: (02) 4228 4133 Facsimile: (02) 4228 6811 ACN 003 936 981
This drawing is subject to COPYRIGHT. It remains the property of Forbes Rigby Pty Ltd

PROJECT TITLE
WEST CLIFF COLLIERY
STAGE 3 EMPLACEMENT
APPROVALS
for
ILLAWARRA COAL

DRAWING TITLE			
CONCEPT DESIGN EMPLACEMENT POND EP4			
Project No.	Com No.	Drawing No.	REV
107045	1	1714	0