

Instrument of Variation

Consolidated Coal Lease 724 (1973)

I, **JAMIE TRIPODI, Executive Director Assessments & Systems**, Mining Exploration and Geoscience in the Department of Regional NSW, with the delegated authority of the Minister under section 261B and clause 12 of Schedule 1B of the *Mining Act 1992* (the Act), **vary** the conditions of consolidated coal lease **CCL 724 (1973)** as described in Schedule A.

The conditions of **CCL 724 (1973)**, as varied, are set out in Schedule B.

The variation takes effect on 17 October 2022.



JAMIE TRIPODI
Executive Director Assessments & Systems
As delegate for the Minister administering the *Mining Act 1992*
Delegation date: 14 May 2018

Dated: 08 September 2022

Schedule A

Condition	Variation	New Condition	
Definitions	Definitions of 'Department', 'Environment' 'Environmental incident notifications and reports' and 'Harm to the environment' omitted as no longer used.	N/A	
1	Notice to Landholders	Wording amended to modernise the condition	1. Notice to Landholders – see Schedule B
2	Environmental Harm	Condition omitted	N/A
3	Mining Operations Plan	Condition omitted	N/A
4	Environmental Management Report	Condition omitted	N/A
5	Environmental Incident Report	Condition omitted	N/A
6	Additional Environmental Reports	Condition omitted	N/A
7	Rehabilitation	Condition omitted	N/A
8	Extraction Plan	Condition omitted	N/A
10	Blasting	Condition omitted	N/A
11	Safety	Condition omitted	N/A
12	Prevention of Soil Erosion and Pollution	Condition omitted	N/A
13	Transmission lines, Communication lines and Pipelines	Condition omitted	N/A
14	Roads and Tracks	Condition omitted	N/A
15	Trees and Vegetation	Condition omitted	N/A
17	Resource Recovery	Condition omitted	N/A
18	Indemnity	Condition omitted	N/A
21	Security	Condition amended to modernise the wording. Condition has been re-numbered due to omission of other conditions.	2. Group Security– see Schedule B
23	Suspension of Mining Operations	Condition omitted	N/A
24	Cooperation Agreement	Condition amended to modernise the wording. Condition has been re-numbered due to omission of other conditions.	3. Cooperation Agreement – see Schedule B
27	Restrictions on Mining	Condition omitted	N/A
28	Minister's Consent to Further Mining	Condition omitted	N/A
29	Mining Beneath Certain Crown Land	Condition omitted	N/A
30	Approval to Mine Beneath Certain Crown Land	Condition omitted	N/A

31	Personia hirsuta Offset Management Plan	Condition omitted	N/A
N/A		New condition attached	4. Assessable Prospecting Operations– see Schedule B
SPECIAL CONDITIONS			
22	Prescribed Dam	Condition amended to modernise wording and update references. Condition has been re-numbered.	5. Dams Safety – Mining Leases – see Schedule B
25	Details of Lands and Purposes	Condition has been re-numbered due to omission of other conditions.	6. Details of Lands and Purposes – see Schedule B
26	Limitations on Mining Areas	Condition has been re-numbered due to omission of other conditions.	7. Limitations on Mining Areas – see Schedule B

Schedule B

Mining Lease Conditions

(Version as at February 2022)

Definitions

Words used in this mining lease have the same meaning as defined in the *Mining Act 1992* except where otherwise defined below:

Term	Definition
Act	means the <i>Mining Act 1992</i> .
Landholder	for the purposes of these conditions: <ul style="list-style-type: none">• does not include a secondary landholder• includes, in the case of exempted areas, the controlling body for the exempted area.
Minister	means the Minister administering the Act.

Note:

1. The rights and duties of the Lease Holder(s) are those prescribed by the *Mining Act 1992* and the Mining Regulation 2016, subject to the terms and conditions of this mining lease.
2. This mining lease does not override any obligation on the lease holder(s) to comply with the requirements of other legislation and regulatory instruments which may apply (including all relevant development approvals) unless specifically provided under the *Mining Act 1992* or other legislation or regulatory instruments.

MINING LEASE CONDITIONS

Standard conditions

See Mining Regulation 2016, Schedule 8A, Part 2.

NOTE TO HOLDERS: The prescribed standard conditions in the Mining Regulation 2016, Schedule 8A, Part 2 apply in addition to the conditions in this Schedule 2 (but have not been replicated in this mining lease). The conditions imposed by the Mining Regulation 2016 prevail to the extent of any inconsistency with the conditions in this Schedule 2.

General conditions

1. Notice to Landholders

- (a) Within 90 days from the date of grant or renewal of this mining lease, the lease holder must give each landholder notice in writing:
- (i) that this mining lease has been granted or renewed; and
 - (ii) whether the lease includes the surface.

The notice must include a plan identifying the lease area and each landholder and individual land parcel within the lease area.

- (b) If there are ten or more landholders to which notice must be given, the lease holder will be taken to have complied with condition 1(a) if a notice complying with condition 1(a) is published in a newspaper circulating in the region where the lease area is situated.

2. Group Security

The security deposit to be provided and maintained for this mining lease is part of a group security deposit.

The lease holder is required to provide and maintain a security deposit to secure funding for the fulfilment of obligations under the mining leases covered by the group security deposit, including obligations under each mining lease that may arise in the future.

The amount of the security deposit to be provided as a group security deposit has been assessed at **\$24,853,000**.

The leases covered by the group security include this **CCL 724 (1973)** and:

Lease type	Lease Number	Act Year
MPL	200	1973
MPL	201	1973
ML	1473	1992

3. Cooperation Agreement

The lease holder must make every reasonable attempt, and be able to demonstrate its attempts to the satisfaction of the Secretary, to enter into a cooperation agreement with the holder(s) of any overlapping authorisations issued under the *Mining Act 1992* and

Mining Lease Conditions 2021	Version Date: February 2022
Consolidated Coal Lease 724 (Act 1973)	Page 5 of 9

petroleum titles issued under the *Petroleum (Onshore) Act 1991*. The cooperation agreement should address but not be limited to:

- access arrangements
- operational interaction procedures
- dispute resolution
- information exchange
- well location
- timing of drilling
- potential resource extraction conflicts; and
- rehabilitation issues.

4. Assessable Prospecting Operations

- (a) The lease holder must not carry out any assessable prospecting operation on land over which this lease has been granted unless:
- (i) it is carried out in accordance with any necessary development consent; or
 - (ii) if development consent is not required, the prior written approval of the Minister has been obtained.
- (b) The Minister may require the lease holder to provide such information as required to assist the Minister to consider an application for approval.
- (c) An approval granted by the Minister under this condition may be granted subject to terms.
- (d) The lease holder must comply with the approval granted to the holder under this condition.

Special conditions

5. Dams Safety – Mining Leases

- (a) The lease holder must not mine within any part of the lease area which is within the notification area of the **Brennan’s Creek Dam** without the prior written approval of the Minister and subject to any conditions the Minister may stipulate.
- (b) Where the lease holder desires to mine within the notification area, the lease holder must:
- (i) at least twelve (12) months before mining is to commence or such lesser time as the Minister may permit, notify the Minister of the desire to do so. A plan of the mining system to be implemented must accompany the notice; and
 - (ii) provide such information as the Minister may direct.
- (c) The Minister must not, except in the circumstances set out in sub-paragraph (ii), grant approval unless sub-paragraph (i) of this paragraph has been complied with.
- (i) This sub-paragraph is complied with if:
 - (a) Dams Safety NSW as constituted by section 6 of the *Dams Safety Act*

Mining Lease Conditions 2021	Version Date: February 2022
Consolidated Coal Lease 724 (Act 1973)	Page 6 of 9

- 2015 and the owner of the dam have been notified in writing of the desire to mine referred to in paragraph (b).
- (b) the notifications referred to in clause (a) are accompanied by a description or plan of the area to be mined.
 - (c) the Secretary has complied with any reasonable request made by Dams Safety NSW or the owner of the dam for further information in connection with the mining proposal.
 - (d) Dams Safety NSW has made its recommendations concerning the mining proposal or has informed the Minister in writing that it does not propose to make any such recommendations; and
 - (e) where Dams Safety NSW has made recommendations the approval is in terms that are:
 - in accordance with those recommendations; or
 - where the Minister does not accept those recommendations or any of them - in accordance with a determination under sub-paragraph (ii) of this paragraph.
- (ii) Where the Minister does not accept the recommendations of Dams Safety NSW or where Dams Safety NSW has failed to make any recommendations and has not informed the Minister in writing that it does not propose to make any recommendations, the approval shall be in terms that are, in relation to matters dealing with the safety of the dam:
- as determined by agreement between the Minister and the Minister administering the *Dams Safety Act 2015*; or
 - in the event of failure to reach such agreement - as determined by the Premier.
- (d) The Minister, on notice from Dams Safety NSW, may at any time or times:
- (i) cancel any approval given where a notice pursuant to section 19 of the *Dams Safety Act 2015* is given.
 - (ii) suspend for a period of time, alter, omit from or add to any approval given or conditions imposed.

6. Details of Lands and Purposes

COLUMN 1	COLUMN 2
Lands shown in Blue and Yellow colour on the Plan annexed hereto and marked "B".	<ol style="list-style-type: none"> 1. Constructing, maintaining or using in connection with mining any of the following namely: - shaft, shaft appurtenances, borehole, tunnel, drive, drain, dam, reservoir, railway, tramway, building, machinery, bridge, road, telephone line, magazine, and coal preparation plant. 2. The generation of electricity. 3. The erection, maintenance and use of standards, posts, wires and appliances for the transmission of electricity. 4. The storing of fuel, machinery, tools, timber or equipment. 5. The dumping or depositing of any overburden, coal, minerals, mine residues or tailings. 6. Erecting dwellings for the use of persons employed on or about a mine or land subject to a lease for mining purposes.
Lands shown Green colour on the Plan annexed hereto and marked "B".	<ol style="list-style-type: none"> 1. Constructing, maintaining or using in connection with mining any of the following namely: - adits, bin, borehole, bridge, building, coal preparation plant, conveyor systems, dam, drain, drift, machinery, magazine, railway, reservoir, road, shaft, shaft appurtenances, telephone line, tramway and tunnel. 2. The erection, maintenance and use of standards, posts, wires, and appliances for the transmission of electricity. 3. The dumping or depositing of coal, minerals, mine residues or tailings. 4. The storing of fuel, machinery, tools, timber or equipment in connection with mining. 5. Erecting dwellings for the use of persons employed on or about a mine or land subject to a lease for mining purposes. <p>Laying, maintaining and using a pipeline or cable in connection with mining.</p> <ol style="list-style-type: none"> 6. Establishing, maintaining and using a nursery and associated facilities for the propagation of plants, shrubs and trees required for the rehabilitation of lands used in connection with mining or mining purposes.
Lands shown in Orange and Red colour on the Plan annexed hereto and marked "B".	<ol style="list-style-type: none"> 1. Constructing, maintaining or using in connection with mining any of the following namely: - adits, borehole, bridge, building, coal preparation plant, conveyor systems, dam, drain, drift, jetty, machinery, magazine, railway, reservoir, road, shaft, shaft appurtenances, telephone line, tramway and tunnel. 2. The erection, maintenance and use of standards, posts, wires and appliances for the transmission of electricity. 3. The dumping or depositing of coal, minerals, mine residues or tailings. 4. The storage of fuel, machinery, tools, timber or equipment in connection with mining. 5. Laying, maintaining and using a pipeline or cable in connection with mining.

	<p>6. Establishing, maintaining and using a nursery and associated facilities for the propagation of plants, shrubs and trees required for the rehabilitation of lands used in connection with mining or mining purposes.</p> <p>7. Depositing, with the approval of the Minister, earth, rock, ash, mine wastes or other wastes or other substances in shafts, tunnels or other mine workings for the purpose of filling, stowing or making safe those workings.</p> <p>8. The generation of electricity.</p>
--	--

7. Limitations on Mining Areas

The lease holder shall not prospect or mine for coal within the areas shown on the plan annexed hereto marked "B" insofar as such areas relate to the strata specified on that plan other than the mining of coal for the purposes of: -

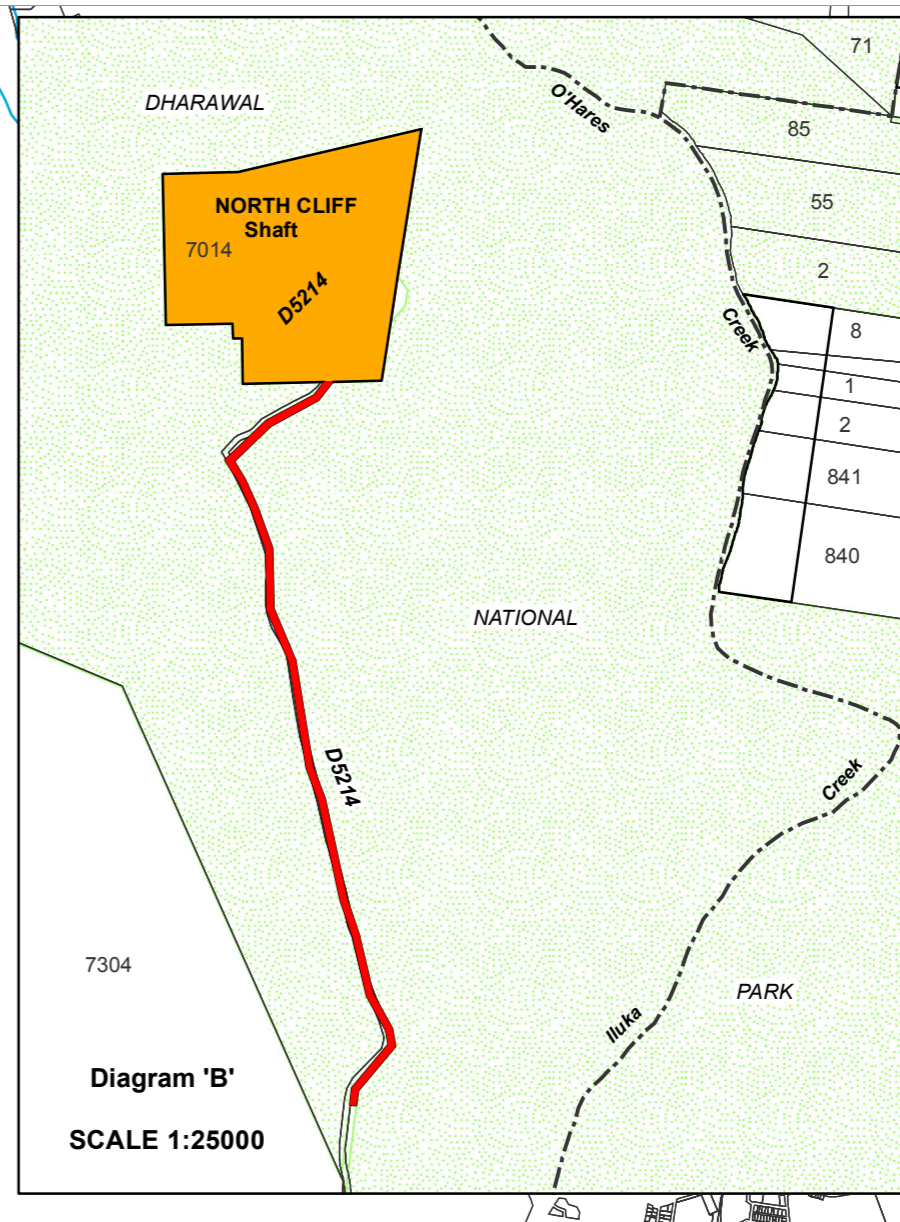
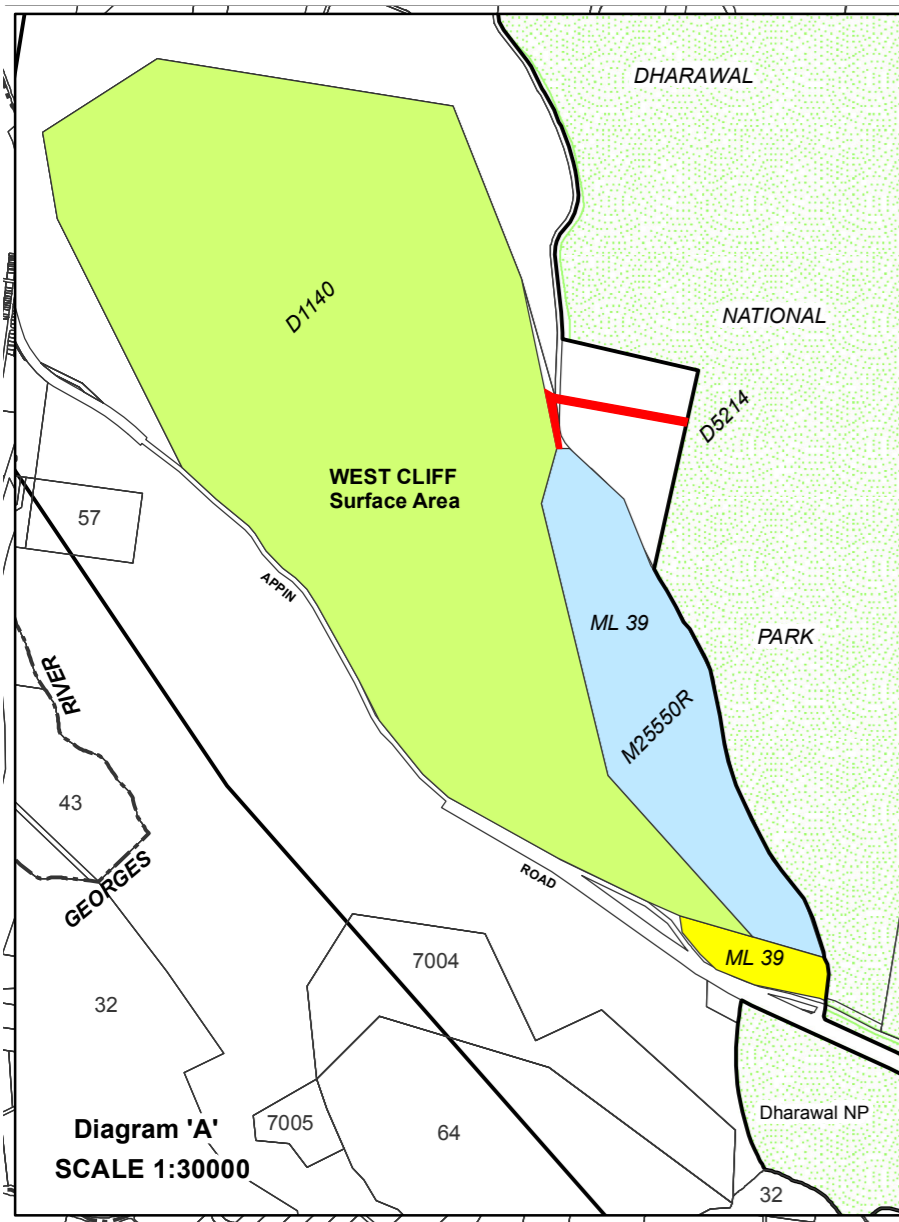
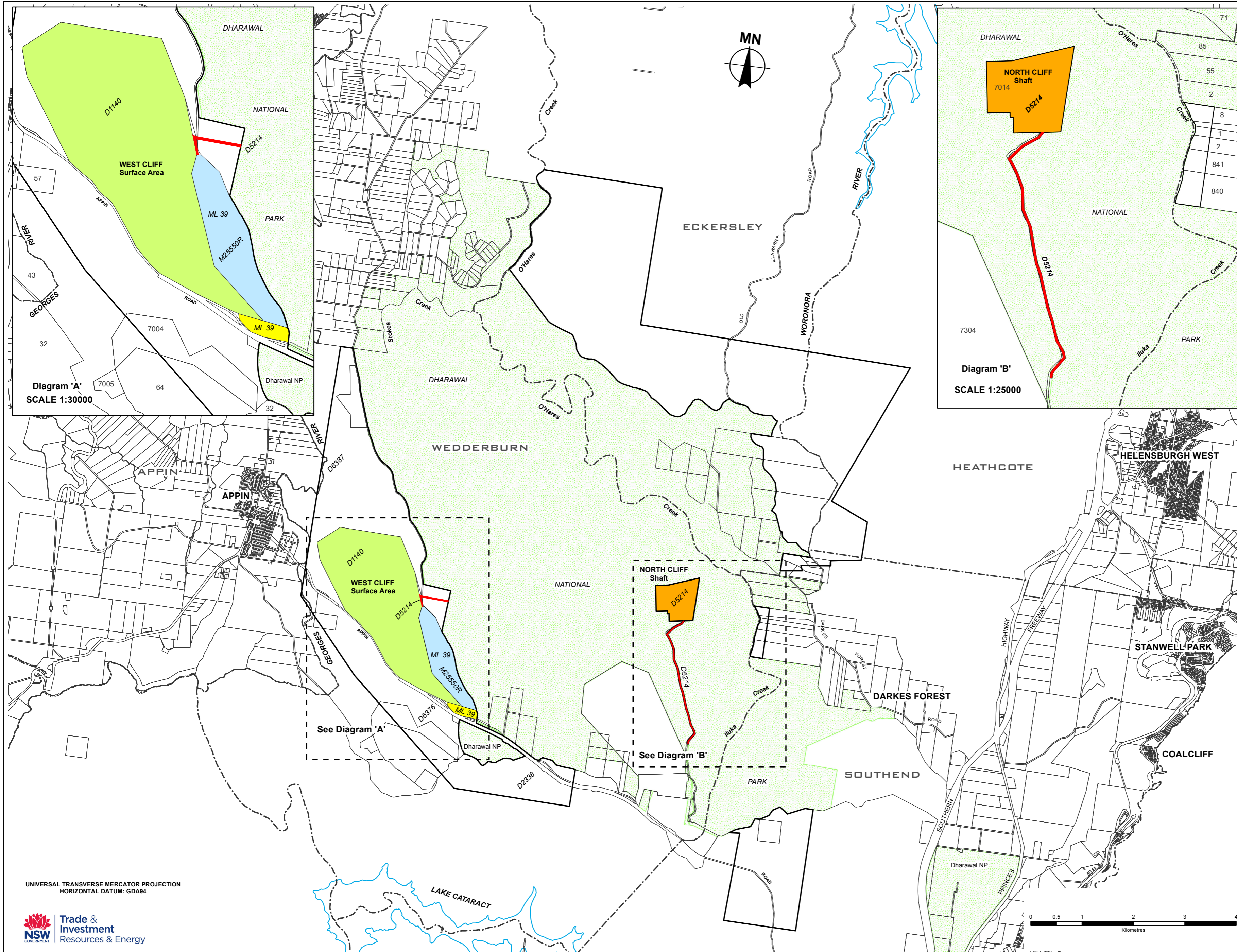
- i. shaft, borehole, tunnel or drive in the area coloured Blue and Yellow.
- ii. adits, borehole, drift, shaft or tunnel in the area coloured Green.
- iii. adits, borehole, drift, tunnel or shaft in the area coloured Orange and Red.

Exploration Reporting

Note: Exploration Reports (Geological and Geophysical)

The lease holder must lodge reports in accordance with the requirements in section 163C of the Mining Act 1992 and clauses 59, 60 and 61 of the Mining Regulation 2016 as well as any further requirements issued by the Secretary under clause 62 of the Mining Regulation.

Guidelines for the structure, content and data format requirements for reports are set out in the Exploration Reporting: A guide for reporting on exploration and prospecting in New South Wales.



PLAN B

SUBJECT TO SURVEY

PARISHES: APPIN, ECKERSLEY, HEATHCOTE, SOUTHEND & WEDDERBURN

COUNTY: CUMBERLAND
 MAP SHEET No. 9029-1-S Appin
 9029-2-N Bulli

SCALE 1:50000

CONSOLIDATED COAL LEASE No. 724 ACT: 1973

HOLDER: ENDEAVOUR COAL PTY LIMITED

GRANT DATE: 04-07-1991

Areas referred to in Condition No. 25 'Details of Lands, Purposes & Condition No. 26 'Limitations on Mining Areas' of the conditions of Consolidated Coal Lease 724 (1973) annexed to this lease.

- Portion ML 39 - Formerly MPL 1414 (1906), M25550R Embraces the surface and soil below thereof to a depth of 152.4 metres.
- Portion ML 39 - Formerly MPL 1414 (1906), M25550R Embraces the surface only.
- Diagram No. 5214 - Formerly MPL 199 (1973) Embraces the surface and soil below thereof to a depth of 15 metres.
- Diagram No. 5214 - Formerly MPL 199 (1973) Embraces the surface and soil below thereof to a depth of 152.4 metres.
- Diagram No. 1140 - Formerly MPL 17 (1973) Embraces the surface and soil below thereof to a depth of 152.4 metres.

NOTES:
 SHEET 2 OF 4 SHEETS

Plans used in the course of this compilation:
 M25550R, M27128, M26837, M26915R, D5214, D1140 & D2338

THIS PLAN SUPERSEDES: D7017 (Plan B)

DISCLAIMER:
 The compilation of information shown on this diagram is derived from plans and data, some of which has been produced and provided by third parties. Title boundaries have been adjusted to maintain their relationship with the digital cadastral database in some circumstances, thereby creating certain inaccuracies in the data. The Department and the State of New South Wales make no statement, representation or warranty that the information shown on this diagram is complete, accurate or free from error. Users rely on the titles information supplied on this diagram at their own risk. The Department and the State of New South Wales accepts no responsibility for any person, acting on, or relying on, or upon any of the titles information shown on this diagram, and disclaim all liability for any loss, damage, cost, expense or injury (including death) incurred or arising by reason of any person using or relying on the titles information contained on this diagram by reason of or by any error, omission, defect or misstatement (whether such error, omission or misstatement is caused by or arises from negligence, lack of care or otherwise). Users should always verify historical material by making and relying upon their own separate inquiries prior to making any important decisions or taking any action on the basis of titles information.

Prepared by: P. Gorrel
 Date: 11-04-2013
 Approved by: P Hord
 Date: 5-06-2013
 Maitland Regional Office
 Paper No: 10-4471

UNIVERSAL TRANSVERSE MERCATOR PROJECTION
 HORIZONTAL DATUM: GDA84



M27213

D10004110