

GEMCO
SOUTHERN LEASE
MINING PROJECT

PROJECT OVERVIEW

GEMCO wants to extend the life of its manganese mine by developing a new mining area in the Southern Lease. We plan to start construction in 2029.

AS PART OF THE PROJECT WE WILL:

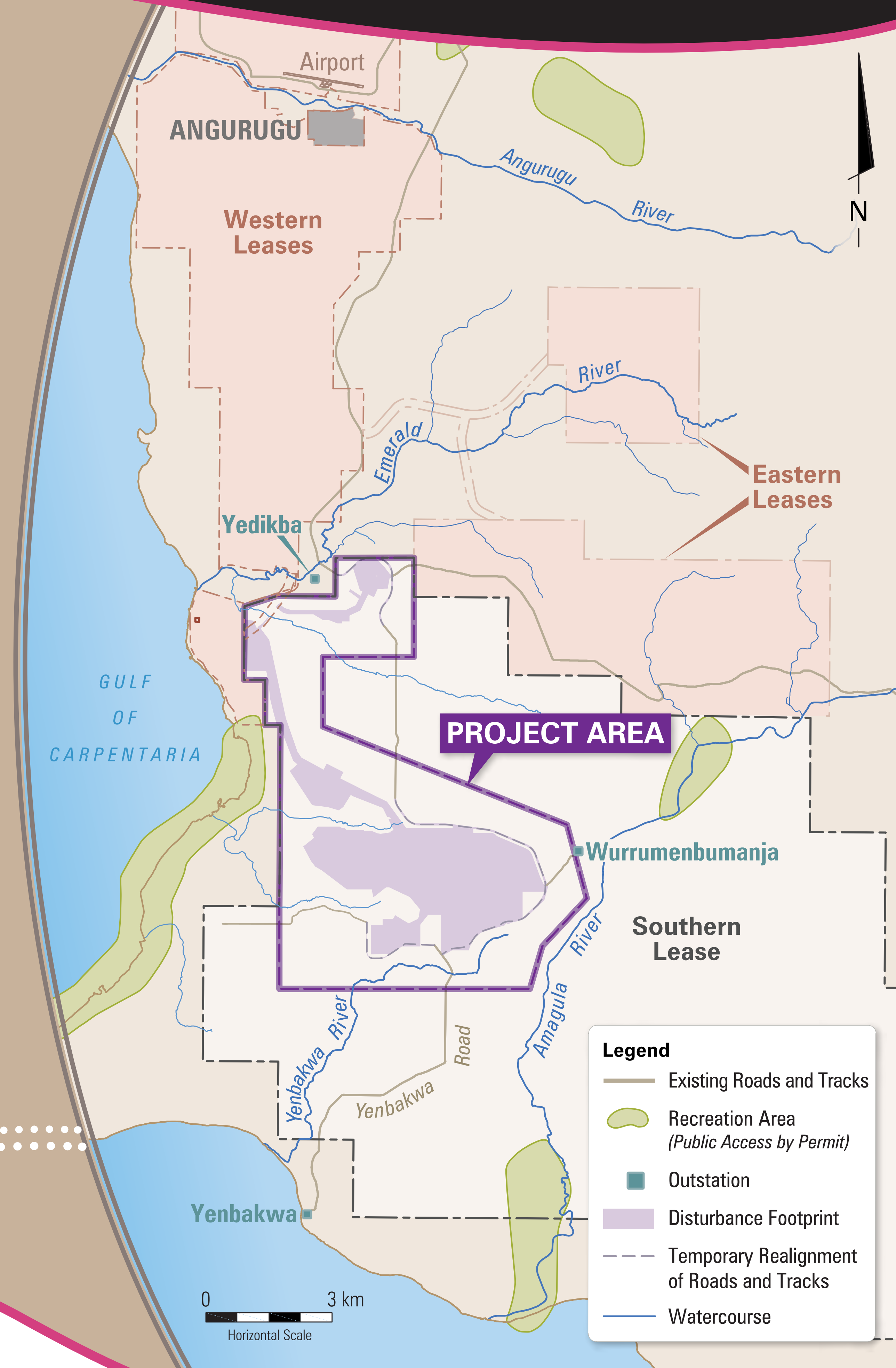
Clear land and build haul roads and dams

Mine manganese ore

Take the ore by truck to the existing mine to be washed

Rehabilitate once mining is finished

Move Yenbakwa Road and other tracks away from the mining area so that people can still access country



GEMCO
SOUTHERN LEASE
MINING PROJECT

WHAT WE HAVE HEARD SO FAR

Thank you for talking to GEMCO about the Southern Lease Project. This is what you told us is important:

PROTECTING WATER
AND FOOD SOURCES
LIKE FISH AND CRABS



We have designed the project to protect rivers and creeks, and to manage water safely and respectfully.

REHABILITATING
THE LAND QUICKLY
AFTER MINING



We will fill quarries with dirt and grow native plants to help the wildlife come back. When mining ends, we will remove all equipment and put back tracks for the community to use.

GETTING PERMISSION
FROM THE RIGHT
TRADITIONAL OWNERS



We will only mine in the Southern Lease if the Traditional Owners who speak for this country agree, and a Mining Agreement will be developed with the ALC under the Aboriginal Land Rights Act.

PROTECTING SACRED SITES,
SONGLINES, AND CULTURAL
AREAS IN THE SOUTHERN LEASE



We will avoid mining near these places and will keep working with Traditional Owners to preserve and protect culture for Anindilyakwa people both now and in the future.

People raised other issues and asked questions about the project. We have noted these and will make sure that the Environmental Impact Statement (EIS) responds to them. Once the EIS is ready, we will meet with Anindilyakwa people to explain how these issues were addressed.

GEMCO
SOUTHERN LEASE
MINING PROJECT

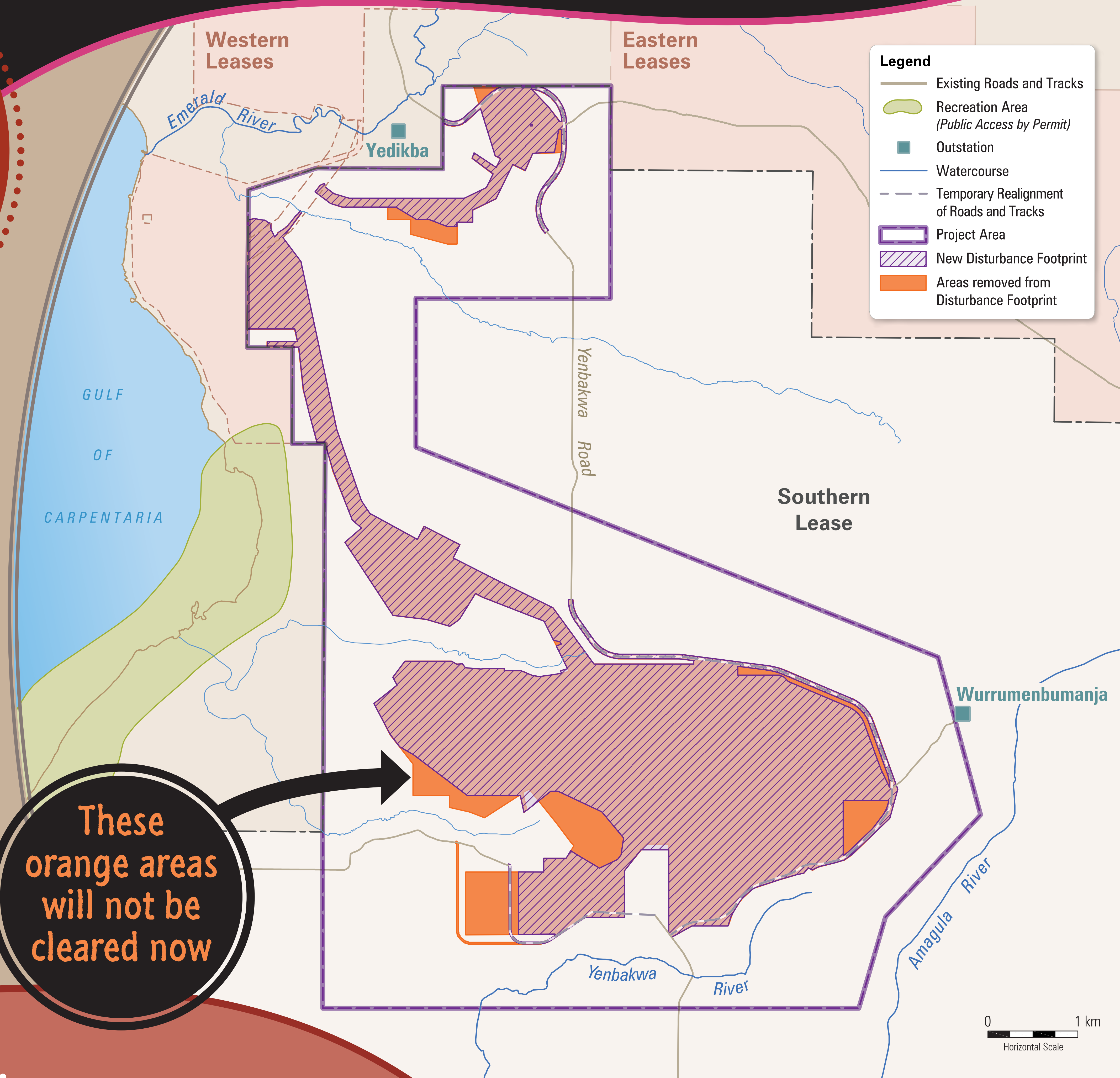
PROJECT CHANGES

Since we first talked to
you, we have made some
changes to the project.

We made these changes
because we learnt more
about the area and the
manganese ore.

We now plan to
clear less land.

These
orange areas
will not be
cleared now



MINING AGREEMENT



The project will not happen unless the Traditional Owners who speak for the land agree.



The ALC will talk to the Traditional Owners about the project and help them to understand it.



If the Traditional Owners want the project to happen, GEMCO will sign a Mining Agreement with them.



The Mining Agreement will discuss topics that are important to Traditional Owners, including royalties and rehabilitation.

GEMCO
SOUTHERN LEASE
MINING PROJECT

APPROVALS



A team of experts will write a report called an environmental impact statement (EIS).



The EIS will look at how the project may impact people, culture, heritage, water, plants and animals.



In 2027, when the EIS is finished, GEMCO will come back and talk to you about the EIS results.



The government will check the EIS and decide if we have done enough to avoid and manage impacts.

ENVIRONMENTAL APPROVALS