

MEETING MINUTES



SOUTH 32 ILLAWARRA METALLURGICAL COAL COMMUNITY CONSULTATIVE COMMITTEE

MEETING: # 45

LOCATION: Douglas Park Community Hall

DATE: 21 January 2020

ATTENDEES:

Mike Archer (MA - Chair)
Danny Stewart (DS)
Barry Durham (BD)
Sharyn Cullis (SC)
Peter Chaffer (PC)
Shane Simpson (SS)
Noel Lowry (NL)
Amanda Blunt (AB – South32 Community)
Ashley Flynn (AF – South32 Community)
Chris Schultz (CS – South32 Environment)
Billy Agland (BA – South32 Environment)

APOLOGIES:

Sam Davis (SD)
Michael McGrath (MM)
Craig Manz (CM – South32 Appin General Manager)

ABSENT:

1	<i>PURPOSE</i>
	The purpose of the Community Consultative Committee is to facilitate and maintain two-way communication between South32 Illawarra Metallurgical Coal, key stakeholders and local residents. It is to promote open discussion on the activities of South32 Illawarra Metallurgical Coal's Bulli Seam Operations, including underground mining and surface operations of Appin; environmental performance and community relations; and to keep all stakeholders informed on these matters.
2	<i>AGENDA</i>
	<ul style="list-style-type: none"> • Welcome and apologies • Declaration of Interests • Acceptance of Previous Meeting Minutes / Business Arising from previous Meeting Minutes • Questions of Notice Tracker • Update from South32 Illawarra Metallurgical Coal <ul style="list-style-type: none"> ○ Environment (including Longwall 902 End of Panel Report and Old Growth Trees) ○ Operations ○ Community • General Business <ul style="list-style-type: none"> ○ 2020 meeting dates ○ Round the table • Meeting close
3	<i>WELCOME / APOLOGIES</i>
	<ul style="list-style-type: none"> • MA opened the meeting at 4.00pm and noted apologies from MM, SM and CM. • MA welcomed BG and AF to the meeting.
4	<i>DECLARATION OF INTERESTS / CORRESPONDENCE</i>
	MA declared he receives payment from South32 Illawarra Metallurgical Coal to fulfil the role of Independent Chair. It is a requirement of the Government CCC Guidelines that this be noted and stated in the minutes at every meeting.
5	<i>PREVIOUS MEETING MINUTES AND BUSINESS ARISING</i>
	<p>AB provided comment from SD that previous meeting minutes (December 2019) were incorrect. It should include MA to write to the Government on the CCC's behalf re the inconsistencies between mining leases and exploration licences compared to Mine Subsidence Districts. CCC members present recall MA would request a Department representative attend a meeting in 2020, where questions such as this one can be asked. The minutes were not altered.</p> <p>Previous meeting minutes (December 2019) were approved by SC and seconded by DS. Actions from the previous meeting (December 2019):</p> <ul style="list-style-type: none"> • AB advised the business is unable to accept committee input in the Conservation Management Plan (CMP) for Mountbatten. The revised CMP is similar to the previous CMP and will be shared with the committee when it is available. • AB advised the requested map of exploration leases, including landmarks have been provided in hard copy and will be attached to the meeting minutes. • CS advised Sydney Water use at the Appin Mine is included in the Environment update for the meeting. • Actions outstanding and to remain in the minutes are: <ul style="list-style-type: none"> ○ MA to contact the Department and arrange a representative to attend a meeting in 2020. ○ AB and CS to plan field visits to Georges River pre and post remediation. ○ AB to investigate opportunity to host a once-off community event at Mountbatten after the chapel works are complete. ○ AB to arrange an underground tour for the Committee in 2020. ○ CS to provide a plan/map of the area when the Georges River Remediation Plan is approved.

Environment update**Environmental Improvement Plan (water)**

- CS indicated the plan to meet water quality concentration limits has been submitted to the EPA. Draft licence conditions were issued on 15 January and a response has been provided to the EPA. It was indicated that the EPA will be distributing the draft licence conditions to the community (Georges River Working Group) for feedback.
- IMC met with the EPA on 11 December 2019 to discuss the plan.
- Prefeasibility/feasibility studies are continuing for the Appin West and Appin North water filtration plants. Appin North is the current priority of the business. Both are on track.
- The final Brine study at LDP5 has been submitted to the EPA and we are waiting for feedback. The Committee discussed the aquatic life at the Brine discharge location (Marley Place) given it would have a modified environment.
- CS provided information regarding how much Sydney Water IMC use at the Appin Mine operation and where/how this water is used. The more water the water treatment plant produces, the less Sydney Water is used.

Location	October 2019	November 2019	December 2019
Dilution water - BCD	16.8 ML	15.5 ML	13.3 ML
Appin East - potable (excluding BCD, including houses)	15.4 ML	15.9 ML	15.1 ML
Appin North - potable	0.1 ML	0.2 ML	0.1 ML
Appin West - potable	2.9 ML	3.2 ML	0.4 ML
Appin West - treated water	64.9 ML	78.6 ML	86.3 ML

- Recently the EPA has advised IMC through the draft licence conditions that Sydney Water is not to be used to dilute discharge to Brennans Creek Dam due to water restrictions. The water quality limits placed on IMC will not apply during the period water restrictions are in place.

Non-compliances and reporting

- CS reported numerous exceedances of air quality criteria were recorded due to regional bushfires and dust, however they are not recorded as a non-compliance.
- A noise exceedance was recorded at Vent Shaft 2 during the November 2019 monitoring period. 42 dBA vs limit of 40 dBA LAeq. Work is being completed on fans 1, 2 and 3 at Vent Shaft 2 to improve performance.
- CS reported there was a hydraulic oil spill at Appin East on to Appin Road on 31 December 2019. No environmental harm resulted.
- CS reported there was a truck fire on Appin Road 31 December 2019 which remains under investigation.
- A summary of the Independent Environment Audit was provided. The report is available on the South32 website https://www.south32.net/docs/default-source/illawarra-coal-bulli-seam-operations/bulli-seam-operations-project-independent-environment/bsi-independent-environmental-audit-2019---action-response-table.pdf?sfvrsn=d3be7a7b_4.

Georges River Remediation Plan

- CS advised the Georges River Remediation Plan has been submitted to the Department of Planning, Industry and Environment. Feedback is pending.

Brennans Creek Dam

- CS advised discharge had ceased on 23 December 2019.
- Levels are currently sitting at 8.6 metres. After the recent rain the Dam level increased by 10cm.

Longwall 902 End of Panel Report

- BA presented the Longwall 902 (LW902) End of Panel report.
- LW902 commenced 12 May 2018 and was completed 3 April 2019. It was 2,153 metres long and

305 metres wide.

- Monitoring sites included the Nepean River closure, Australian Rail Track Corporation and Menangle Road.
 - Nepean River closure was similar to or within the predicted values.
 - The Harris Creek Cliff Line was 860 metres from LW902. Closure is less than the maximum predicted values.
 - Six new gas release zones were observed during LW902. The Committee discussed gas release at length. There is a trigger action response plan (TARP) in place (level 1-3) with no level 2 or 3 activated. All 31 occurrences had estimated emission rates of <3000 L/min and are classified as TARP Level 1.
 - Subsidence of the rail track was less than predicted and no speed restrictions/serviceability issues were attributed to mining.
 - No impacts to public or commercial infrastructure were recorded.
 - Private homes remained in safe and serviceable condition. Claims lodged with Subsidence Advisory NSW were attributed to non-structural minor cracking, sticky doors, leaking bathroom waterproofing, pools/pool gates, ground water bores and storm water pipe damage.
- Surface water and ground water is also monitored. A map was presented to the Committee detailing surface water monitoring sites and results discussed. The ground water levels were typically within the predicted range and there is no significant change to the water quality.
- The End of Panel Report is provided on the South32 website
https://www.south32.net/docs/default-source/illawarra-coal/bulli-seam-operations/appin/appin-area-7-longwall-705-end-of-panel-report/appin-area-9-end-of-panel-reports/appin-area-9-longwall-902-end-of-panel-report---full-report/lw902_eop_summary_report.pdf?sfvrsn=dc9e18a5_2.

Illawarra Metallurgical Coal update

Old Growth Trees

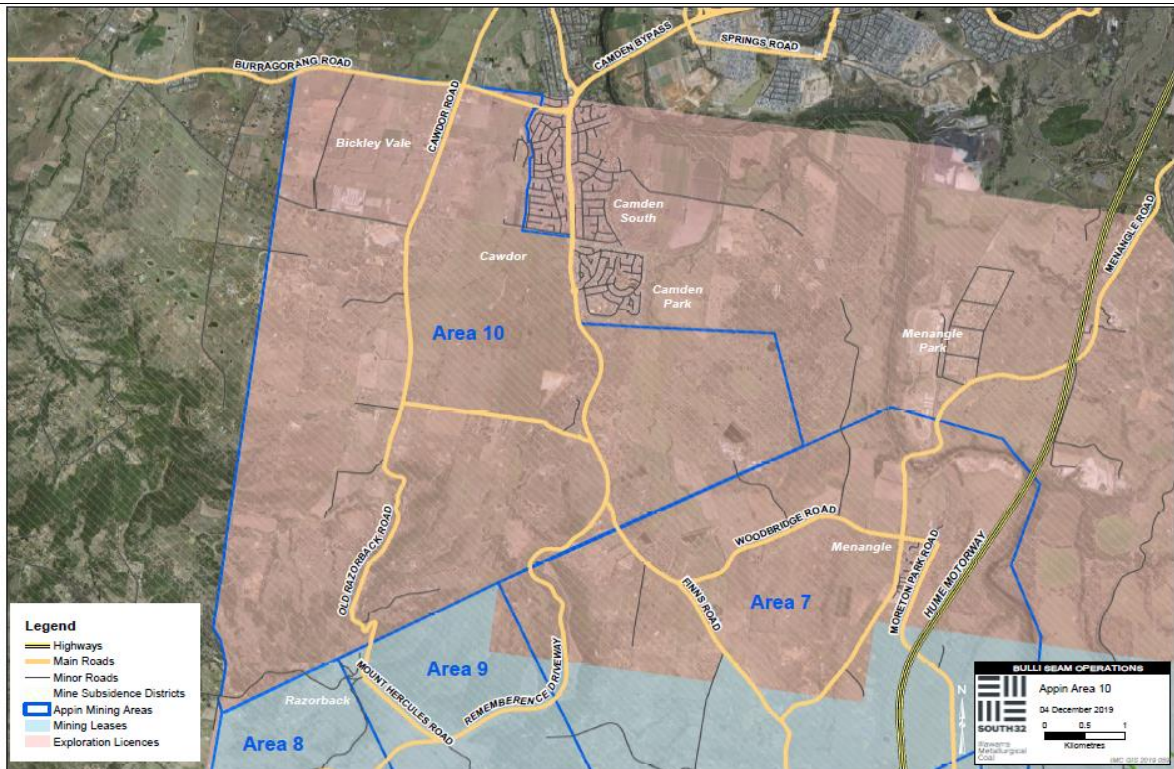
- AB action has been taken to protect the Old Growth trees on IMC property. Since December 2019 an independent consultant identified 'at-risk' trees and we commenced fencing five trees. The remaining unfenced trees are considered not 'at-risk' and IMC will consider fencing these in FY2021.

Mountbatten House

- AB noted the Conservation Management Plan has been drafted and will be shared with the Committee when it is finalized.
- AB shared the draft building plans for the chapel/stable building, noting these will be lodged with the Department for approval in the coming months.

Exploration

- AB reminded members exploration activities have started in Appin Area 10, with two exploration drill rigs on two properties in Cawdor. A third rig is operating in Menangle.
- Engagement with landholders is continuing with most of the activities occurring on private property.
- AB shared a map of the Area 10 exploration area (see below).



Proposed ventilation shaft

- There is no further update from the previous meeting in November. A review of the mine plan is continuing. As soon as new information is available it will be shared.
- Five air quality monitors have been installed in Douglas Park. These will remain in place until 16 March 2020.
- The air monitoring results will be shared after the data has been downloaded and interpreted by the consultant conducting the monitoring.

Appin Area 9 update

- AB advised LW903 commenced on 1 November 2019. It has progressed 559 metres as at 13 January 2020.
- LW903 is expected to take about 12 months to complete.
- Engagement is continuing with residents in the subsidence area.

Appin Area 7 update

- LW708B is on track to commence in the last quarter of FY2020 (April – June 2020).

Impacts update

- No new gas releases have been identified since the previous meeting.
- 12 previously identified zones are currently active. 22 previously identified zones are inactive.
- Monthly inspections are completed. It is worth noting the sites are not active all the time and can fluctuate between active and non-active for a period of time. The information is current as on the day of inspection
- Weekly surveys of Menangle Road commenced in line with Longwall 903. On 13 January 2020 ripples in the pavement were detected. Daily visual inspections are occurring on the area of road with the ripples to ensure safety and serviceability of the road. DS requested the location of the ripples in the road.
- Weekly railway surveys commenced in line with LW903 with daily visual inspections completed. There are no recorded impacts to the rail from LW903.

Community Complaints

- AB advised 2 community complaints had been received since the previous meeting.
 - In December a complaint was lodged against a South32 Illawarra Metallurgical Coal staff member. This was investigated, and the result provided back to the resident.

	<ul style="list-style-type: none"> ○ In January a concern was received regarding our exploration support vehicles using a driveway to turn around on Carrolls Road. This was immediately rectified with a suitable turning area identified. ● AB noted a further complaint was received in September 2019 and not previously reported. This was a complaint lodged against a South32 Illawarra Metallurgical Coal employee which was investigated <p><u>Community Support</u></p> <ul style="list-style-type: none"> ● AB advised South32 donated \$500k to the Australian Red Cross in support of bushfire disaster relief. This brings South32's total donations to organisations dealing with the bushfire crisis to \$1 million since November 2019. ● Illawarra Metallurgical Coal donated P2 masks to local RFS personnel for the Shoalhaven and Southern Highland fires. ● South32 has established a dedicated fundraising page where employees and contractors can donate to either the Australian Red Cross, WIRES or Buy a Bale. South32 will be matching the donations dollar for dollar. As at 13 January 2020 \$44,580 had been raised. ● The Community Partnership Program last met in November 2019. The next meeting is 23 January 2020. At the next meeting the Committee will review applications to join the Board. There are 5 applications and 4 positions available. <p><u>Community Investment Plan</u></p> <ul style="list-style-type: none"> ● AB advised the South32 Illawarra Metallurgical Coal Community Investment Plan 2020 was finalised last month. It will be rolled out this year with funding split between the following: <ul style="list-style-type: none"> ○ Trust funds – ensure communities adjacent to our operations receive benefits ○ Sponsorship – ad-hoc discretionary spend with local partners supporting local priorities ○ Community Investment – sustainable contribution and leave a legacy ○ Strategic Community Investment – focus on water
7	GENERAL BUSINESS
	<p><u>West Cliff Emplacement</u></p> <ul style="list-style-type: none"> ● SC noted a desire to not extend the area attributed to the West Cliff Emplacement Area. It endangered native wildlife and flora. PC noted IMC's rehabilitation program addresses this issue. ● CS noted that an offset for Persoonia Hirsuta, an endangered species, has been established, and IMC work with experts to improve rejuvenation of these species. Management Plans are in place for the Broad-headed Snake (observed in the Stage 4 emplacement area) and Southern Brown Bandicoot (never observed in the area). IMC also has approval to clear the Stage 4 area under the BSO Approval. ● SC raised concern for the koala population in the area. ● BD requested a list of tree species planted as part of the rehabilitation. CS advised the top soil from the site is reused in the rehab as it contains seeds local to the area. ● The Committee requested a visit to the Emplacement this year. ● DS raised the health of the trees planed in the biobanking area. He requested information on the maintenance of these trees since planting.
8	ACTIONS
	<ul style="list-style-type: none"> ● Action: CS to provide a plan/map of the area when the Georges River Remediation Plan is approved. ● Action: MA to contact the Department and arrange representative attendance at a meeting in 2020. ● Action: AB and CS to plan field visits to Georges River pre and post remediation. ● Action: AB to arrange underground tour for Committee in 2020. ● Action: AB to arrange a site visit to the West Cliff Emplacement in 2020. ● Action: AB to investigate opportunity to host once off community event at Mountbatten after the chapel works are complete. ● Action: CS to provide a list of the seeds/species used in the rehabilitation at the West Cliff Emplacement.

9	<i>CLOSE OF MEETING</i>
	Close of meeting at 5.40pm. Next meeting: Tuesday 24 March 2020, 4.00pm – 6.00pm at Douglas Park Community Hall.