

MEETING MINUTES

MENANGLE ADVISORY PANEL

MEETING: # 8

LOCATION: Menangle RFS

DATE: 6th April 2022

ATTENDEES: Community Representatives

Allana Storrer (AS)
 Nick Storrer (NS)
 Jim Arentz (JA)
 Martin Scott (MS)
 Michele Arentz (MA)

Illawarra Metallurgical Coal (IMC)
 Representatives

Simon McVeigh (SM – IMC Mining Approvals)
 Ian Bell (IB – IMC Projects)
 Antony Leone (AL – IMC Corporate Affairs)

Independent Chair

Kate Kernaghan (KK – Factotum Communications)

APOLOGIES:

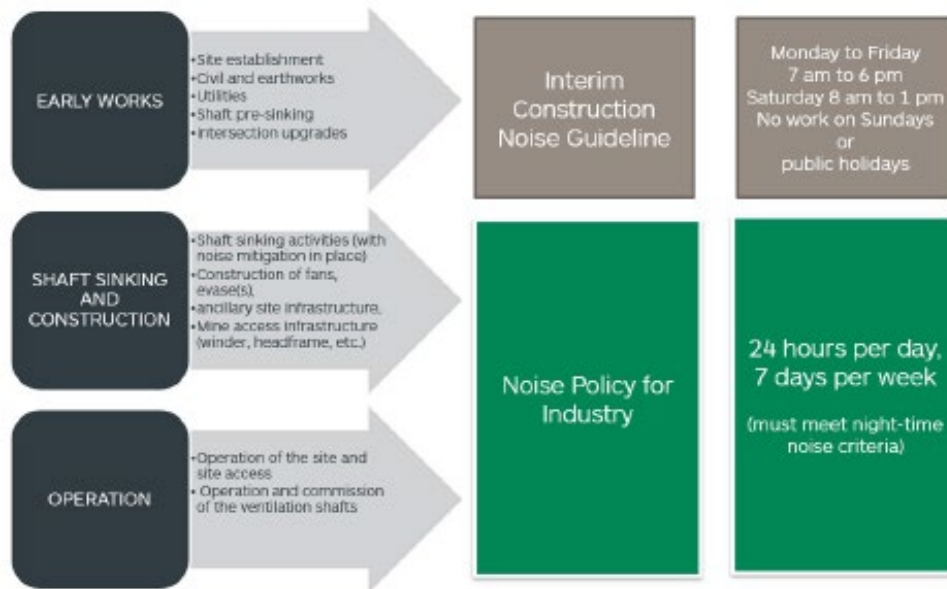
Angela Tyson (AT)
 Michael Reardon-Small (MRS)
 John Potter (JP)

PURPOSE	
	<p>The Menangle Advisory Panel (MAP) provides a forum to enable regular two-way communication between representatives of Menangle and Douglas Park residents and Illawarra Metallurgical Coal (IMC) about the Company's proposed ventilation and mine access project at 345 Menangle Road.</p> <p>The MAP provides a practical and helpful connection to residents for IMC through the members who have self-nominated to be on the Panel and voluntarily give their time.</p>
AGENDA	
	<ol style="list-style-type: none"> 1. Welcome/Apologies 2. Declaration of interests 3. Acceptance of previous minutes 4. Project approvals update 5. Underground roads and mining explainer 6. Sight distances in current road design 7. Further tower design graphics / visual comparisons 8. Tree planting species 9. General Business / Matters arising 10. Agenda items for next meeting
1 WELCOME / APOLOGIES	
	<p>KK opened the meeting at 6:00 pm</p> <p>Traditional Owners acknowledged and respects paid to Elders past, present and emerging.</p>

2	DECLARATIONS OF INTEREST
	<p>No declarations of interest offered.</p> <p>Note: Independent Chair KK is remunerated by IMC.</p>
3	ACCEPTANCE OF PREVIOUS MINUTES
	<p>MAP/CCC special meeting minutes accepted without changes.</p>
4	PROJECT APPROVALS UPDATE
	<p>Modification to existing Bulli Seam Operations Project Approval (08-0150):</p> <p>After a 16month approvals process, DPIE has completed its assessment of the Project. It has recommended to the Minister for Planning and Homes that the Project be approved.</p> <p>MS - Who is the Minister responsible? AL - The Minister for Planning and Homes which is Anthony Roberts.</p> <p>A summary of their recommendation includes (below emailed to MAP):</p> <ul style="list-style-type: none"> • The DPIE recognises that the modification proposal is necessary to provide the required ventilation infrastructure and mine access to ensure a safe and efficient underground working environment and support the ongoing operation of the mine. • The DPIE acknowledges that there would be an increase in amenity impacts in the local area, particularly at the two closest receivers from increased noise and visual impacts. The DPIE has carefully considered these residual impacts on these receivers against relevant NSW government policy and guidelines, and recommended conditions to ensure these impacts are minimised as far as reasonable and feasible. • Strategically, the DPIE recognises that ongoing operation of the mine would ensure continued supply of high-quality metallurgical coking coal to Australian steelmakers, as well as the continued direct employment of 1,800 people, continued engagement of local suppliers and businesses (A\$237M spent in 2020) and provision of substantial royalties (A\$2 billion) to the State. • On balance, the Department is satisfied that the proposed Project can be carried out in an environmentally sustainable manner, and that the proposal is in the public interest as it would allow the continued operation of the mine and the associated employment and economic benefits to be realised. <p>Three documents have been published on the Major Projects website:</p> <ol style="list-style-type: none"> 1. Recommendation of Approval <ul style="list-style-type: none"> • Report detailing the assessment against the objectives of the EP&A Act • DPIE is satisfied that the proposed modification can be carried out in an environmentally sustainable manner. • The proposal is in the public interest. 2. Instrument of Modification <ul style="list-style-type: none"> • Details the modifications to the development consent (08_0150) for the Bulli Seam Operations Project to allow for the AMVA project to be undertaken in an environmentally sustainable manner. 3. Consolidated Consent <ul style="list-style-type: none"> • Includes specific requirements for construction and operation of the AMVA project.

4.1 NOISE CONDITIONS

Noise conditions hours of Operation



Interim Construction Noise Guidance (Early Works)

Worst case predictions in Noise and Vibration Impact Assessment (NVIA):

- Exceedances of the day-time NML of between 1-5 dB(A) at two receivers (R2 and R3) during site establishment, civil and earthworks, utilities, pre-shaft sinking and intersection upgrades.
- OOH would only be permitted in accordance with traffic management plan for emergency or safety reasons.

MA – Asked if there are acquisitions triggered by project noise?

SM - Schedule 5 of the approval conditions outlines procedures for exceedances. It outlines several steps and treatments to be followed before acquisition comes into the process. If triggered, the acquisition process is an independent process.

Noise Policy for Industry

- The noise modelling predicts that this noise limit could be met at all receivers following the initial construction works with the application of reasonable and feasible noise mitigation measures in particular:
- The construction of acoustic barriers at both ventilation shafts prior to the construction of the acoustic sheds/mitigation
- Restricting shaft sinking activities to daytime only until the acoustic sheds/mitigation are constructed.
- Notification, independent review, and land acquisition conditions apply where exceedances of this criteria occur.

A noise management plan will be required as part of the Construction Environment Management Plan (CEMP)

MS – Concerned about a 2012 date in the approval condition with regards to a noise management plan.

SM – The 2012 date is a reference to the original mine approval (this project is a modification to the original approval). Schedule 4 will have a 2012 reference, but Schedule 4a the construction conditions for the AMVA project. This Project will need to have a Noise Management Plan developed in consultation with the EPA before work can start. It can be a little confusing reading through the approval document as there will be administrative edits updating various aspects outside this Project.

SM – MAP members are invited to check their interpretation of the conditions documents via Antony if there is anything they need to confirm.

Blasting Hours:

- Monday to Friday 9 am to 5 pm and Saturday 9 am to 1 pm.
- No blasting is allowed on Sundays, public holidays, or at any other time without the written approval of the Planning Secretary unless an additional blast is required following a blast misfire.
- Blasting Frequency: 1 blast per 24-hour period at each of the shafts unless an additional blast is required following a blast misfire.
- If IMC decides to seek the Planning Secretary's approval to carry out blasting outside of the hours specified above, then it must demonstrate that the air blast overpressure levels from the blasting complies with the night-time max sleep disturbance maximum noise trigger level criteria specified in Table 2B of condition 2C, Schedule 4.

MS – Animals (ie dogs) will be able to detect / be disturbed during outside of hours blasting which in turn would disturb residents

During blasting operations:

- IMC will engage suitably qualified and experienced person to oversee the process of blasting, including blast planning, design, supervision and monitoring.
- There is a blasting management plan required under the CEMP

JA – Concern Blasting could disrupt motorists or be a safety hazard for drivers.

MA – Suggests a sign warning motorists with a variable message sign.

AL / IB – Will take the suggestion to the team. Could be particularly useful idea when blasting is in the early stages close to the surface. There are thousands* of vehicles through that section of road per day.

**Post meeting confirmation – approximately 3000 vehicles per day according to Traffic Assessment.*

4.2 TRAFFIC CONDITIONS

Prior to the commencement of construction, IMC must construct the Site entrance and its intersection with Menangle Road to the satisfaction of WSC and TfNSW.

Early Works (defined in CoA) are permissible during Site entrance and its intersection works and will allow a shortening of the construction period, reducing the duration of potential impacts over the construction period.

A Section 138 Road Works approval is also required prior to intersection works being undertaken. Traffic Control will be in place during construction of Site entrance and its intersection with Menangle Rd

There is a traffic management plan required under the CEMP.

AS – How long will the intersection changes take to complete?

IB – approximately 5 months

AS – when will the work start? What are the next steps for the project?

AL – The high voltage work (burying powerlines) will happen first, then intersection work and earthworks concurrently.

MA – Will the community be notified before roadworks commence (including those outside the immediate area such as Camden motorists who may make up a significant portion of through traffic and may choose to travel another route to avoid the roadworks).

AS – How and when will the community be notified about the consent conditions received?

AL – A Community Update is being prepared notifying community about the consent and summarising the conditions. The update will outline next steps, baseline survey offers and time project frames.

	<p>AS – Where will the Community update be distributed?</p> <p>AL – To the Menangle, Menangle Park, Douglas Park households that have been receiving updates to date (around 900 households).</p> <p>AL – We will plan to host a community Open Day prior to construction, to provide information to people about the conditions, early works package (including earthworks, burying powerlines and intersection upgrade), baseline inspections and general next steps for the project.</p>
--	--

4.2 STRUCTURAL INTEGRITY	
---------------------------------	--

	<p>Baseline Inspections</p> <p>If IMC receives a written request from the owner of any privately-owned land within 1 kilometer of VS7 & 8 for a property inspection to establish the baseline condition of any buildings and/or structures on their land, then within 2 months of receiving this request IMC must:</p> <ul style="list-style-type: none"> • Commission a suitably qualified, experienced, and independent person, whose appointment is acceptable to both parties: • Establish the baseline condition of any buildings and/or structures on the land, or update the previous property inspection report; and identify any measures that should be implemented to minimise the potential blasting impacts of the project on these buildings and/or structures • Give the landowner a copy of the new or updated property inspection report • If there is a dispute over the selection of the suitably qualified, experienced and independent person, or the Proponent or landowner disagrees with the findings of the independent property investigation, then either party may refer the matter to the Planning Secretary for resolution. <p>AL – Baseline inspections will be offered in the community update and at the community open day. If there are any properties within a 1km radius that haven't been in touch to arrange an inspection, AL will follow up directly to ensure they know this offer is available.</p> <p>Property Investigations</p> <p>If the owner of any privately-owned land within 1 kilometer of VS7 & 8 claims in writing that buildings or structures on their land have been damaged as a result of blasting, and the Planning Secretary is satisfied that an investigation is warranted, then within 2 months of receiving this claim in writing from the landowner IMC must:</p> <ul style="list-style-type: none"> • commission a suitably qualified, experienced and independent person, whose appointment is acceptable to both parties, to investigate the claim; and • give the landowner a copy of the property investigation report. • If this independent property investigation confirms the landowner's claim, and both parties agree with these findings, then the Proponent must repair the damages to the satisfaction of the Planning Secretary. • If there is a dispute over the selection of the suitably qualified, experienced and independent person, or the Proponent or landowner disagrees with the findings of the independent property investigation, then either party may refer the matter to the Planning Secretary for resolution.
--	---

4.3 CONSTRUCTION ENVIRONMENTAL MANAGEMENT PLAN (CEMP)	
--	--

	<p>Prior to the commencement Early Works IMC must prepare a CEMP for the construction phase to the satisfaction of the Planning Secretary.</p> <p>This plan must:</p>
--	---

- Be prepared in Consultation with EPA.
- Include specific environmental management and monitoring measures for construction works (minimising noise, dust, visual impacts and surface disturbance, erosion and sediment controls, monitoring inflows of groundwater to the shaft, include details of vegetation clearing protocols).
- Include a Blast Management Plan and Noise Management Plan prepared in consultation with EPA.
- Include a Traffic Management Plan prepared in consultation with TfNSW.
- Uses a combination of real-time and supplementary attended monitoring to evaluate noise generated by the project during construction; and includes a protocol for determining exceedances of the relevant conditions of approval.
- Includes an air quality monitoring program that includes real time monitoring to evaluate air quality impacts during construction and includes a protocol for determining exceedances of the relevant conditions of this approval.

CEMP Next Steps:

- A draft CEMP is being prepared in accordance with the requirements set out in the conditions.
- Will be provided to the relevant agencies (WSC, TfNSW and EPA) for consultation.
- Once the CEMP is deemed compliant with conditions of approval and applicable guidelines the CEMP will be assessed by DPIE
- The CEMP will need to be approved by DPIE for work to commence.

Noise monitoring

Sth32 will undertake real-time noise monitoring at multiple locations that will aid the day-to-day surveillance and indication of noise generated from operations. Compliance will be monitored by additional 'attendant monitoring' that will be located closer to the sensitive receivers and publicly available on our website.

MA – what are the reporting requirements on monitoring?

AL – there are 14-day reports based on the environmental performance of BSO provided to the EPA and published on the website. Further details regarding reporting at AMVA will be developed in the CEMP. Any exceedance has requirements and process, including notification to impacted neighbors.

MA – Is there 24hour monitoring at other sites including Douglas Park?

AL –the Douglas Park monitor is not real time.

Air-Quality Monitoring

South32 will prepare an air-quality management plan with associated monitoring protocols as recommended by the MAP.

MA – Will there be air monitoring locations at Menangle in town?

SM – No – monitoring sites will be closer to the project site, based on the principle that the readings closest to the sites would be the more concentrated results that those further afield and that monitoring will need to provide a means for comparing near-site air quality with regional air quality. The modelling conducted in the modification assessment did not indicate annual or 24 hours exceedances of relevant criteria would be likely.

MAP members expressed an ongoing concern about expose to silica.

MA – expressed concern about silica in bunding when weather conditions are dry.

AL – Bunds will be capped

AL – Sth32 received a Request for Information during the planning approvals process asking specifically about Silica. The EPA reviewed the air quality report with regard to silica, and then that was further reviewed by an air quality expert.

The air quality consultant who undertook the assessment could come to a future meeting if the MAP would like.

MA – questioned why there were seemingly irrelevant details included in the consent conditions documents.

SM – There is a broad practice of updating original approval documents whenever they are superseded with modifications to capture administrative changes or progression of industry practice considerations.

5	<p>UNDERGROUND ROADS AND MINING EXPLAINER</p>
	<p>Two videos were played outlining the underground mining process. The first showed how mines were created including the design of mines such as Appin Mine. The second showed how coal was extracted from mines using machinery.</p> <p>In parts of the mine, coal can be transported some 12km on conveyor belts to be processed.</p> <p>MA - Is the mine back filled? If not, doesn't this create subsidence issues? IB - Mine is not backfilled – the hydraulic supports outlined in the videos provides the support for the mine to remain intact underground. As the mine advances, the rock falls behind these hydraulic supports (this area is called a goaf). AL – South32 have a process around anticipating and managing subsidence. They typically conduct baseline surveys a year before mining will impact a property. The property is monitored pre, during and post the active mining period. Properties can lodge a claim to the government division that handles subsidence (Subsidence Advisory NSW). Regarding any disputes, Subsidence Advisory NSW will determine the outcome. The goal is to compensate or repair any damages caused by mining after the longwall advances beyond the property.</p>
6	<p>SIGHT DISTANCES IN CURRENT ROAD DESIGN</p>
	<p>Models were shared showing animated drive through sequences from both directions. These are available on the Project webpage. A static map was also shown with 20metre intervals marked to demonstrate scale and sightlines. There is no right turn median acceleration lane as crash data has meant that TfNSW no longer use that design in new intersection planning on safety grounds.</p> <p>AS – What will the speed limit be once the intersection upgrade is complete. AL – there will be no change. The intersection has been designed to 80km per hour. SM – There will be advisory signs erected signalling a recommended 55km speed through the intersection.</p> <p>AS – has the design encroached on landowners? AL – No - any adjustments have been made on the Sth32 owned property.</p> <p>JA – How long is the turning lane for site entry? MA – Will the intersection be lit? AL – Around 170m long turning lane. Yes – the sight will have lighting compliant to Australian Standards.</p>

7 FURTHER TOWERS DESIGN GRAPHICS/ VISUAL COMPARISONS

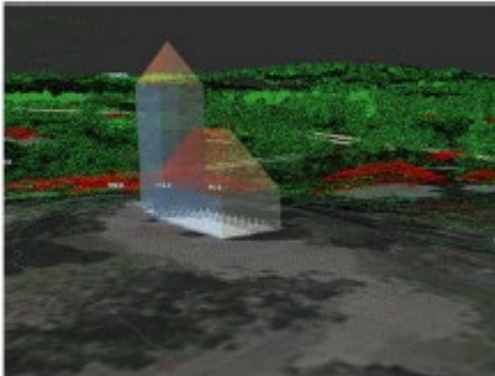
In order to give an indication of the height of the tower within the landscape, South32 provided some visual renders comparing the height of St James Church in Menangle (19m tall at the steeple) with the ventillation shaft. South32 outlined that given St James Church is on a 5m elevation on a rise in the township, it's a fairly comparable way to visualise the height of the shaft when driving past from the road way.

AL – Suggested MAP could have a think about whether there is appetite for a mural of some description to be installed on the ventilation shaft (similar to what can be found on water towers in regional towns)

MS – Would the sediment pond cope with the sort of rain that has been experienced in 2022?

IB – The sediment pond has been designed to a 1:100 standard. The pond can be managed by drawing down (pre-discharging) when extreme weather is predicted.

- Request to help visualise height of VS7 headframe with St. James Church (Menangle).
- Point modelling data extracted from surveys over the area.
- Approximate height of St. James' Church steeple is 19m.



8 TREE PLANTING SPECIES

Plant species were outlined to the group.

MA – Wattle species have around an 8yr lifespan

IB / SM – Correct. Wattle are selected for the pioneering and Nitrogen function they provide.

MS – What is being done to manage weeds?

AL – Weeds have been sprayed for in specific circles around new plantings, but not on a broad scale across the property. Can't introduce stock to manage growth as they would eat the saplings.

Plant	Category	Expected height at maturity
Acacia falcata	shrub-to small tree	3-4m
'sickle wattle'		
Acacia implexa	small tree	8-9m
'tightwood/hickory wattle'		
Bursaria spinosa	shrub	6-7m
Indigofera australis	shrub	2.5m
'Australian indigo'		
Melaleuca decora	Small to medium tree	7m
'white feather honeymyrtle'		
Corymbia maculate	tree	30m
'spotted gum'		
Eucalyptus crebra	tree	30m
'narrow leaved ironbark'		
Eucalyptus eugenoides	tree	30m
'white stringybark'		
Eucalyptus moluccana	tree	25m
'grey box'		
Eucalyptus tereticornis	tree	30m
'forest red gum'		



Approximately 4,000 natives planted onsite



SLIDES 32

AS – Once the powerlines are buried, can the gaps in tree plantings be closed?

IB – It is likely the gaps will remain to allow for future 66KVA powerline installation.

9 GENERAL BUSINESS / MATTERS ARISING

- AMCCC will be notified on all MAP updates. MAP will also be copied on all AMCCC updates. Notifications should be issued in advance, not after lodgement. Noted and agreed with by IMC.
- Mining maps with road networks for inclusion on next MAP agenda. Completed. Included in this presentation.
- To find and publish a submission received by Judy Hannan questioning permissibility of helicopter landings in the LGA. RFI response on planning portal website:
<https://majorprojects.planningportal.nsw.gov.au/prweb/PRRestService/mp/01/getContent?AttachRef=RFI-32854960%2120211209T001907.496%20GMT>
- South32 will add information on sight distances to the next MAP agenda. Completed. Included in this presentation.
- Confirm the species of tree plantings at next MAP meeting. Completed. Included in this presentation.
- Reschedule site tour / underground tour when virus impacts have settled. IMC Operations are still under "Orange Trigger Action Response Plan" (i.e. restrictions to visitors) due to increased cases/close contacts. Being reviewed frequently. Once lifted – a date will be discussed with the MAP.
- Prepare graphics / schematics to aid tower design discussion at next MAP meeting. Completed. Included in this presentation.

- Installation of an informative sign on 345 Menangle Road. Complete. Refer below.



10 AGENDA ITEMS FOR NEXT MEETING

- UG tour – When the site specific COVID restrictions are eased, allowing visitors, we will arrange with MAP suitable date for the visit.
- Invite the air quality specialist to a future meeting to discuss silica if MAP request it.
- Investigate electronic signage informing public prior to Menangle roadworks.

Close of meeting 8:06pm.

Next meeting

TBC Late May / Early June pending progress of management plans - unless matters arise in the interim that warrant convening the MAP to discuss.